

Datasheet for ABIN7193310  
**anti-IL2RG antibody (AA 23-262)**



[Go to Product page](#)

5 Images

## Overview

Quantity:	100 µL
Target:	IL2RG
Binding Specificity:	AA 23-262
Reactivity:	Human
Host:	Mouse
Clonality:	Monoclonal
Conjugate:	This IL2RG antibody is un-conjugated
Application:	Western Blotting (WB), Flow Cytometry (FACS), ELISA

## Product Details

Purpose:	CD132 Antibody
Immunogen:	Purified recombinant fragment of human CD132 (AA: 23-262) expressed in E. Coli.
Clone:	4A8E5
Isotype:	IgG1
Purification:	Purified antibody

## Target Details

Target:	IL2RG
Alternative Name:	CD132 ( <a href="#">IL2RG Products</a> )
Background:	Description:

## Target Details

---

The protein encoded by this gene is an important signaling component of many interleukin receptors, including those of interleukin -2, -4, -7 and -21, and is thus referred to as the common gamma chain. Mutations in this gene cause X-linked severe combined immunodeficiency (XSCID), as well as X-linked combined immunodeficiency (XCID), a less severe immunodeficiency disorder.

Aliases: IL2RG, P64, CIDX, IMD4, SCIDX, IL-2RG, SCIDX1

---

Molecular Weight: 42.3kDa

---

Gene ID: 3561

---

UniProt: [P31785](#)

---

Pathways: [JAK-STAT Signaling](#), [Growth Factor Binding](#)

## Application Details

---

Application Notes: ELISA: 1/10000  
FCM: 1/200 - 1/400

---

Restrictions: For Research Use only

## Handling

---

Format: Liquid

---

Buffer: Purified antibody in PBS with 0.05 % sodium azide.

---

Preservative: Sodium azide

---

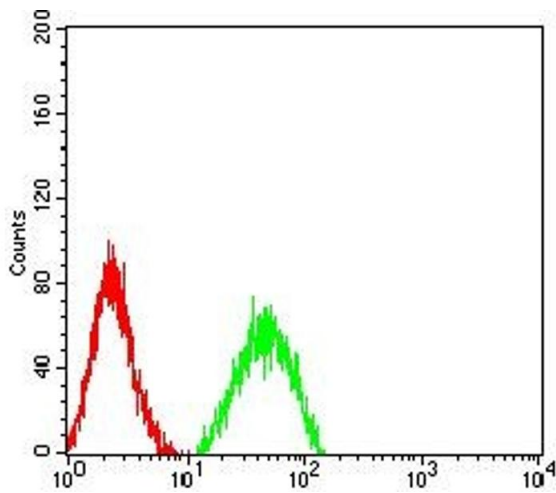
Precaution of Use: This product contains Sodium azide: a POISONOUS AND HAZARDOUS SUBSTANCE which should be handled by trained staff only.

---

Storage: 4 °C, -20 °C

---

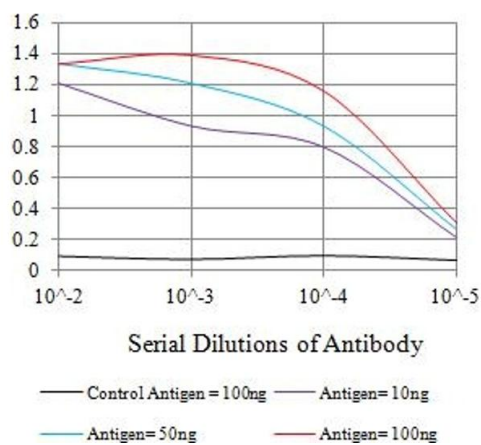
Storage Comment: Store at 4°C short term. Aliquot and store at -20°C long term. Avoid freeze/thaw cycles.



### Flow Cytometry

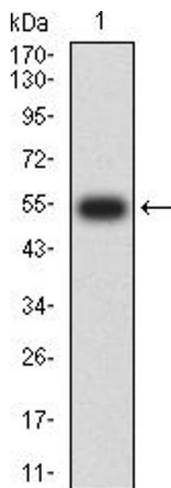
**Image 1.** Flow cytometric analysis of HL-60 cells using CD132 mouse mAb (green) and negative control (red).

### O.D. ELISA Result



### ELISA

**Image 2.** Black line: Control Antigen (100 ng),Purple line: Antigen (10 ng), Blue line: Antigen (50 ng), Red line:Antigen (100 ng)



### Western Blotting

**Image 3.** Western blot analysis using CD132 mAb against human CD132 (AA: extra 23-262) recombinant protein. (Expected MW is 54.2 kDa)

Please check the [product details page](#) for more images. Overall 5 images are available for ABIN7193310.