

Datasheet for ABIN7193315
anti-ADAM8 antibody (AA 17-156)

6 Images

[Go to Product page](#)

Overview

Quantity:	0.1 mg
Target:	ADAM8
Binding Specificity:	AA 17-156
Reactivity:	Human
Host:	Mouse
Clonality:	Monoclonal
Conjugate:	This ADAM8 antibody is un-conjugated
Application:	Western Blotting (WB), ELISA, Immunohistochemistry (IHC), Flow Cytometry (FACS), Immunocytochemistry (ICC), Neutralization (Neut)

Product Details

Immunogen:	Purified recombinant fragment of human CD156 (AA: extra 17-156) expressed in E. coli.
Clone:	2C1F3
Isotype:	IgG2a
Purification:	purified

Target Details

Target:	ADAM8
Alternative Name:	CD156 (ADAM8 Products)
Background:	Description: This gene encodes a member of the ADAM (a disintegrin and metalloprotease

Target Details

domain) family. Members of this family are membrane-anchored proteins structurally related to snake venom disintegrins, and have been implicated in a variety of biological processes involving cell-cell and cell-matrix interactions, including fertilization, muscle development, and neurogenesis. The protein encoded by this gene may be involved in cell adhesion during neurodegeneration, and it is thought to be a target for allergic respiratory diseases, including asthma. Alternative splicing results in multiple transcript variants.

Aliases: ADAM8, MS2, CD156a

Molecular Weight: 88.8 kDa

Gene ID: 101

Pathways: [Activation of Innate immune Response](#), [M Phase](#)

Application Details

Application Notes: ELISA: 1:10000, WB: 1:500 - 1:2000, FCM: 1:200 - 1:400, ICC: N/A, IHC: 1:200 - 1:1000, ICC: 1:200 - 1:1000

Restrictions: For Research Use only

Handling

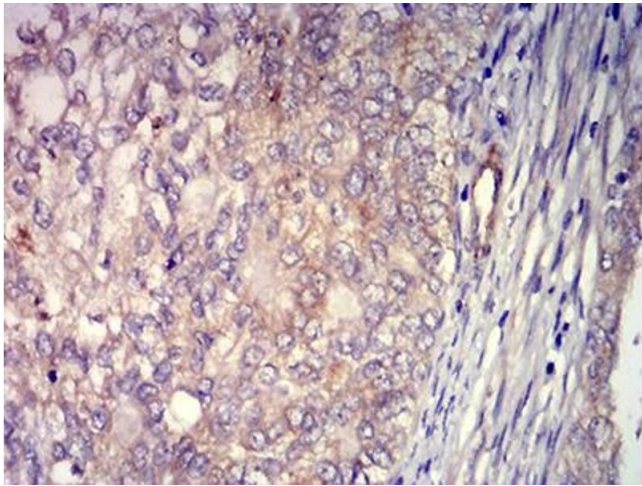
Buffer: Purified antibody in PBS with 0.05 % sodium azide

Preservative: Sodium azide

Precaution of Use: This product contains Sodium azide: a POISONOUS AND HAZARDOUS SUBSTANCE which should be handled by trained staff only.

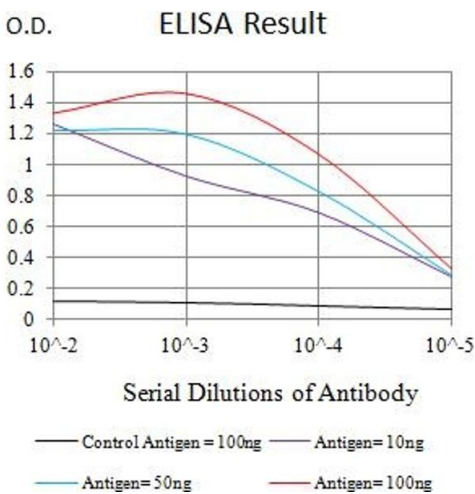
Storage: 4 °C/-20 °C

Storage Comment: 4°C, -20°C for long term storage



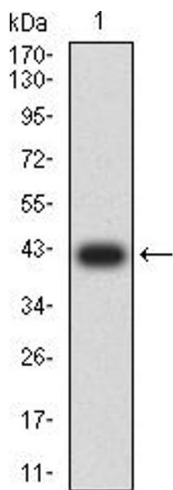
Immunohistochemistry

Image 1. Immunohistochemical analysis of paraffin-embedded cervical cancer tissues using CD156 mouse mAb with DAB staining.



ELISA

Image 2. Black line: Control Antigen (100 ng), Purple line: Antigen (10 ng), Blue line: Antigen (50 ng), Red line: Antigen (100 ng)



Western Blotting

Image 3. Western blot analysis using CD156 mAb against human CD156 (AA: extra 17-156) recombinant protein. (Expected MW is 41.4 kDa)

Please check the [product details page](#) for more images. Overall 6 images are available for ABIN7193315.