

Datasheet for ABIN7193322

anti-CCR2 antibody

4 Images

[Go to Product page](#)

Overview

Quantity:	0.1 mg
Target:	CCR2
Reactivity:	Human
Host:	Mouse
Clonality:	Monoclonal
Conjugate:	This CCR2 antibody is un-conjugated
Application:	Western Blotting (WB), ELISA, Flow Cytometry (FACS), Immunohistochemistry (IHC), Immunocytochemistry (ICC), Neutralization (Neut)

Product Details

Immunogen:	Purified recombinant fragment of human CD192 expressed in E. coli.
Clone:	3B6B1
Isotype:	IgG1
Purification:	purified

Target Details

Target:	CCR2
Alternative Name:	CD192 (CCR2 Products)
Background:	Description: The protein encoded by this gene is a receptor for monocyte chemoattractant protein-1, a chemokine which specifically mediates monocyte chemotaxis. Monocyte chemoattractant protein-1 is involved in monocyte infiltration in inflammatory diseases such as

Target Details

rheumatoid arthritis as well as in the inflammatory response against tumors. The encoded protein mediates agonist-dependent calcium mobilization and inhibition of adenylyl cyclase. This protein can also be a coreceptor with CD4 for HIV-1 infection. This gene is located in the chemokine receptor gene cluster region of chromosome 3.

Aliases: CCR2, CKR2, CCR-2, CCR2A, CCR2B, CKR2A, CKR2B, CMKBR2, MCP-1-R, CC-CKR-2

Molecular Weight: 41.9 kDa

Gene ID: 729230

Pathways: [cAMP Metabolic Process](#), [Regulation of Leukocyte Mediated Immunity](#), [Positive Regulation of Immune Effector Process](#)

Application Details

Application Notes: ELISA: 1:10000, WB: 1:500 - 1:2000, FCM: 1:200 - 1:400, ICC: N/A, IHC: N/A

Restrictions: For Research Use only

Handling

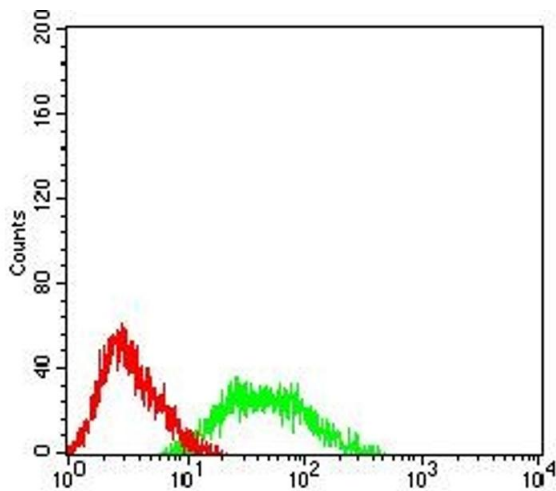
Buffer: Purified antibody in PBS with 0.05 % sodium azide

Preservative: Sodium azide

Precaution of Use: This product contains Sodium azide: a POISONOUS AND HAZARDOUS SUBSTANCE which should be handled by trained staff only.

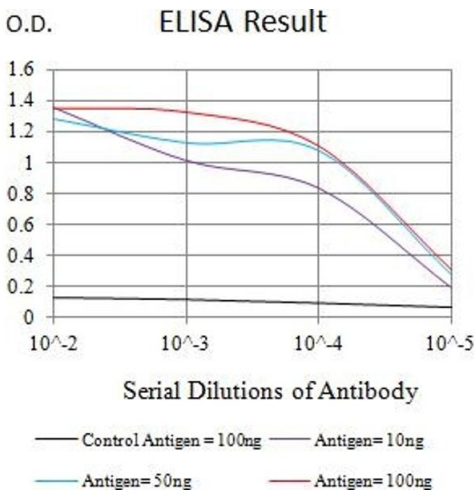
Storage: 4 °C/-20 °C

Storage Comment: 4°C, -20°C for long term storage



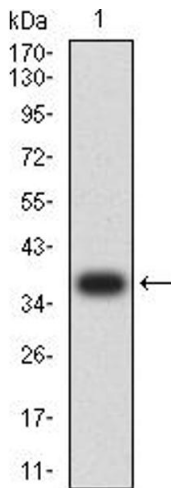
Flow Cytometry

Image 1. Flow cytometric analysis of HL-60 cells using CD192 mouse mAb (green) and negative control (red).



ELISA

Image 2. Black line: Control Antigen (100 ng),Purple line: Antigen (10 ng), Blue line: Antigen (50 ng), Red line:Antigen (100 ng)



Western Blotting

Image 3. Western blot analysis using CD192 mAb against human CD192 recombinant protein. (Expected MW is 37.6 kDa)

Please check the [product details page](#) for more images. Overall 4 images are available for ABIN7193322.