

Datasheet for ABIN7193324
anti-FCRL3 antibody (AA 18-153)[Go to Product page](#)

4 Images

Overview

| | |
|----------------------|---|
| Quantity: | 0.1 mg |
| Target: | FCRL3 |
| Binding Specificity: | AA 18-153 |
| Reactivity: | Human |
| Host: | Mouse |
| Clonality: | Monoclonal |
| Conjugate: | This FCRL3 antibody is un-conjugated |
| Application: | Western Blotting (WB), Immunohistochemistry (IHC), ELISA, Flow Cytometry (FACS), Immunocytochemistry (ICC), Neutralization (Neut) |

Product Details

| | |
|---------------|--|
| Immunogen: | Purified recombinant fragment of human CD307C (AA: extra 18-153) expressed in E. coli. |
| Clone: | 4B4B2 |
| Isotype: | IgG2a |
| Purification: | purified |

Target Details

| | |
|-------------------|---|
| Target: | FCRL3 |
| Alternative Name: | CD307C (FCRL3 Products) |
| Background: | Description: This gene encodes a member of the immunoglobulin receptor superfamily and is |

Target Details

one of several Fc receptor-like glycoproteins clustered on the long arm of chromosome 1. The encoded protein contains immunoreceptor-tyrosine activation motifs and immunoreceptor-tyrosine inhibitory motifs in its cytoplasmic domain and may play a role in regulation of the immune system. Mutations in this gene have been associated with rheumatoid arthritis, autoimmune thyroid disease, and systemic lupus erythematosus. Alternative splicing results in multiple transcript variants.

Aliases: FCRL3, FCRH3, IFGP3, IRTA3, SPAP2

| | |
|-------------------|----------|
| Molecular Weight: | 80.9 kDa |
|-------------------|----------|

| | |
|----------|--------|
| Gene ID: | 115352 |
|----------|--------|

Application Details

| | |
|--------------------|--|
| Application Notes: | ELISA: 1:10000, WB: 1:500 - 1:2000, FCM: 1:200 - 1:400, ICC: N/A, IHC: N/A |
|--------------------|--|

| | |
|---------------|-----------------------|
| Restrictions: | For Research Use only |
|---------------|-----------------------|

Handling

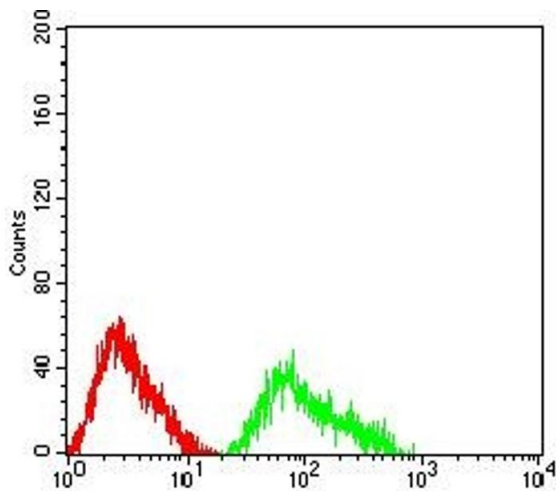
| | |
|---------|---|
| Buffer: | Purified antibody in PBS with 0.05 % sodium azide |
|---------|---|

| | |
|---------------|--------------|
| Preservative: | Sodium azide |
|---------------|--------------|

| | |
|--------------------|--|
| Precaution of Use: | This product contains Sodium azide: a POISONOUS AND HAZARDOUS SUBSTANCE which should be handled by trained staff only. |
|--------------------|--|

| | |
|----------|-------------|
| Storage: | 4 °C/-20 °C |
|----------|-------------|

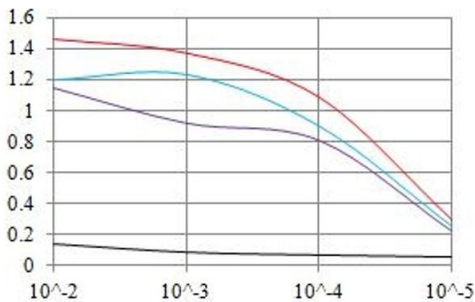
| | |
|------------------|----------------------------------|
| Storage Comment: | 4°C, -20°C for long term storage |
|------------------|----------------------------------|



Flow Cytometry

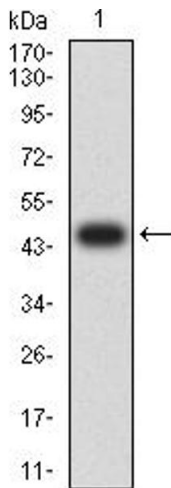
Image 1. Flow cytometric analysis of HL-60 cells using CD307C mouse mAb (green) and negative control (red).

O.D. ELISA Result



Serial Dilutions of Antibody

— Control Antigen = 100ng — Antigen = 10ng
— Antigen = 50ng — Antigen = 100ng



ELISA

Image 2. Black line: Control Antigen (100 ng), Purple line: Antigen (10 ng), Blue line: Antigen (50 ng), Red line: Antigen (100 ng)

Western Blotting

Image 3. Western blot analysis using CD307C mAb against human CD307C (AA: extra 18-153) recombinant protein. (Expected MW is 45.2 kDa)

Please check the [product details page](#) for more images. Overall 4 images are available for ABIN7193324.