

Datasheet for ABIN7193329
anti-SETD8 antibody (AA 109-272)

5 Images

[Go to Product page](#)

Overview

Quantity:	0.1 mg
Target:	SETD8
Binding Specificity:	AA 109-272
Reactivity:	Human
Host:	Mouse
Clonality:	Monoclonal
Conjugate:	This SETD8 antibody is un-conjugated
Application:	Western Blotting (WB), ELISA, Immunohistochemistry (IHC), Immunocytochemistry (ICC), Flow Cytometry (FACS), Neutralization (Neut)

Product Details

Immunogen:	Purified recombinant fragment of human KMT5A (AA: 109-272) expressed in E. coli.
Clone:	7H1G10
Isotype:	IgG1
Purification:	purified

Target Details

Target:	SETD8
Alternative Name:	KMT5A (SETD8 Products)
Background:	Description: The protein encoded by this gene is a protein-lysine N-methyltransferase that can

Target Details

monomethylate Lys-20 of histone H4 to effect transcriptional repression of some genes. The encoded protein is required for cell proliferation and plays a role in chromatin condensation.
Aliases: SET8, SET07, SETD8, PR-Set7

Molecular Weight: 42.9 kDa

Gene ID: 387893

Application Details

Application Notes: ELISA: 1:10000, WB: 1:500 - 1:2000, FCM: 1:200 - 1:400, ICC: N/A, IHC: N/A, ICC: 1:200 - 1:500

Restrictions: For Research Use only

Handling

Buffer: Purified antibody in PBS with 0.05 % sodium azide

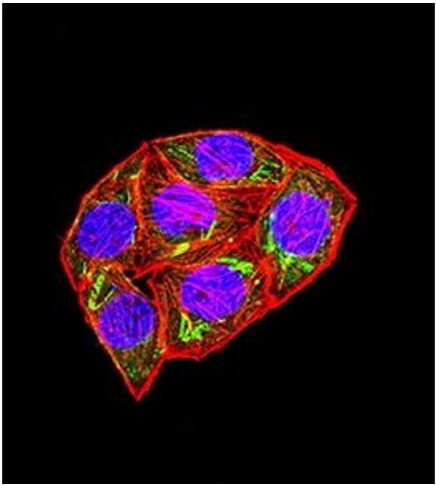
Preservative: Sodium azide

Precaution of Use: This product contains Sodium azide: a POISONOUS AND HAZARDOUS SUBSTANCE which should be handled by trained staff only.

Storage: 4 °C/-20 °C

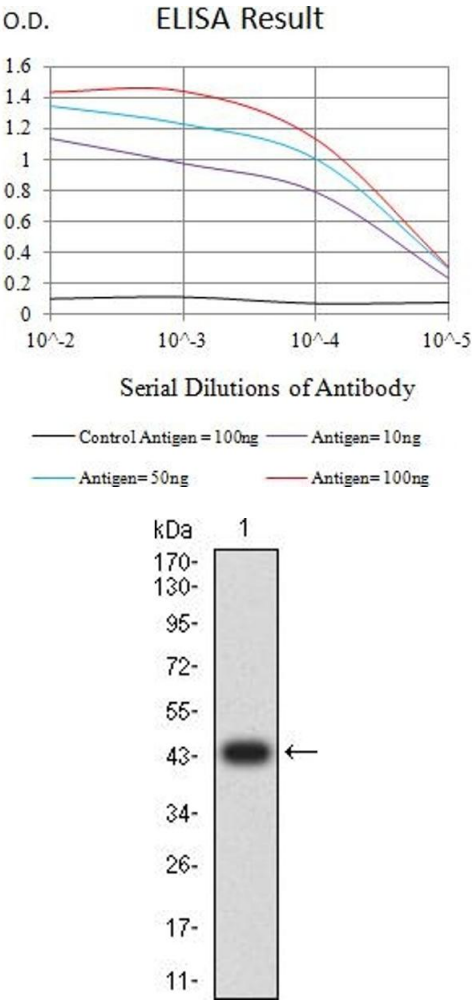
Storage Comment: 4°C, -20°C for long term storage

Images



Immunofluorescence

Image 1. Immunofluorescence analysis of HeLa cells using KMT5A mouse mAb (green). Blue: DRAQ5 fluorescent DNA dye. Red: Actin filaments have been labeled with Alexa Fluor- 555 phalloidin. Secondary antibody from Fisher (Cat#: 35503)



ELISA

Image 2. Black line: Control Antigen (100 ng),Purple line: Antigen (10 ng), Blue line: Antigen (50 ng), Red line:Antigen (100 ng)

Western Blotting

Image 3. Western blot analysis using KMT5A mAb against human KMT5A (AA: 109-272) recombinant protein. (Expected MW is 44.3 kDa)

Please check the [product details page](#) for more images. Overall 5 images are available for ABIN7193329.