

Datasheet for ABIN7193343  
**anti-KAT2B antibody (AA 1-142)**

## 8 Images

[Go to Product page](#)

## Overview

Quantity:	0.1 mg
Target:	KAT2B
Binding Specificity:	AA 1-142
Reactivity:	Human, Mouse, Rat, Monkey
Host:	Mouse
Clonality:	Monoclonal
Conjugate:	This KAT2B antibody is un-conjugated
Application:	Western Blotting (WB), ELISA, Immunohistochemistry (IHC), Flow Cytometry (FACS), Immunocytochemistry (ICC), Neutralization (Neut)

## Product Details

Immunogen:	Purified recombinant fragment of human KAT2B (AA: 1-142) expressed in E. coli.
Clone:	7D12C8
Isotype:	IgG1
Purification:	purified

## Target Details

Target:	KAT2B
Alternative Name:	KAT2B ( <a href="#">KAT2B Products</a> )
Background:	Description: CBP and p300 are large nuclear proteins that bind to many sequence-specific

## Target Details

factors involved in cell growth and/or differentiation, including c-jun and the adenoviral oncoprotein E1A. The protein encoded by this gene associates with p300/CBP. It has in vitro and in vivo binding activity with CBP and p300, and competes with E1A for binding sites in p300/CBP. It has histone acetyl transferase activity with core histones and nucleosome core particles, indicating that this protein plays a direct role in transcriptional regulation.

Aliases: CAF, PCAF, P/CAF

Molecular Weight:	93 kDa
-------------------	--------

Gene ID:	8850
----------	------

Pathways:	<a href="#">p53 Signaling</a> , <a href="#">Regulation of Carbohydrate Metabolic Process</a>
-----------	--

## Application Details

Application Notes:	ELISA: 1:10000, WB: 1:500 - 1:2000, FCM: 1:200 - 1:400, ICC: N/A, IHC: 1:200 - 1:1000, ICC: 1:200 - 1:1000
--------------------	--

Restrictions:	For Research Use only
---------------	-----------------------

## Handling

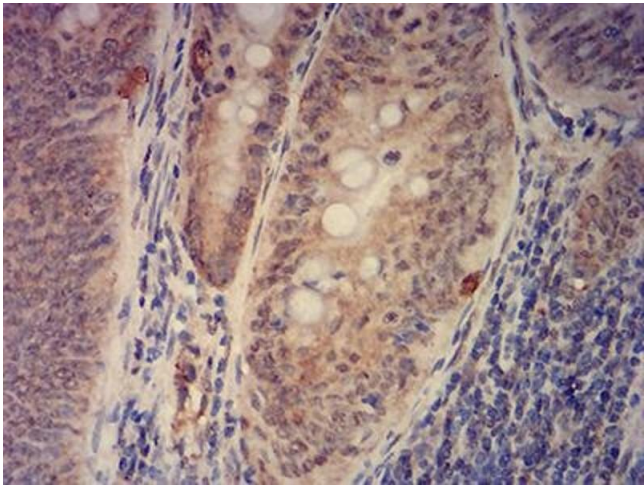
Buffer:	Purified antibody in PBS with 0.05 % sodium azide
---------	---

Preservative:	Sodium azide
---------------	--------------

Precaution of Use:	This product contains Sodium azide: a POISONOUS AND HAZARDOUS SUBSTANCE which should be handled by trained staff only.
--------------------	--

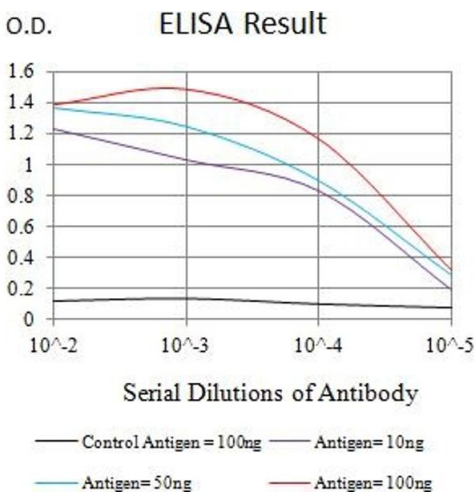
Storage:	4 °C/-20 °C
----------	-------------

Storage Comment:	4°C, -20°C for long term storage
------------------	----------------------------------



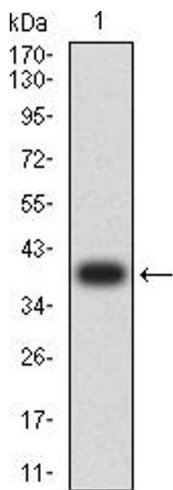
### Immunohistochemistry

**Image 1.** Immunohistochemical analysis of paraffin-embedded rectum cancer tissues using KAT2B mouse mAb with DAB staining.



### ELISA

**Image 2.** Black line: Control Antigen (100 ng),Purple line: Antigen (10 ng), Blue line: Antigen (50 ng), Red line:Antigen (100 ng)



### Western Blotting

**Image 3.** Western blot analysis using KAT2B mAb against human KAT2B (AA: 1-142) recombinant protein. (Expected MW is 39.3 kDa)

Please check the [product details page](#) for more images. Overall 8 images are available for ABIN7193343.