



[Go to Product page](#)

Datasheet for ABIN7193344
anti-LILRA1 antibody (AA 322-461)

4 Images

Overview

Quantity:	0.1 mg
Target:	LILRA1
Binding Specificity:	AA 322-461
Reactivity:	Human
Host:	Mouse
Clonality:	Monoclonal
Conjugate:	This LILRA1 antibody is un-conjugated
Application:	Western Blotting (WB), ELISA, Immunocytochemistry (ICC), Flow Cytometry (FACS), Immunohistochemistry (IHC), Neutralization (Neut)

Product Details

Immunogen:	Purified recombinant fragment of human LILRA1 (AA: extra 322-461) expressed in E. coli.
Clone:	4A1E10A6
Isotype:	IgG2a
Purification:	purified

Target Details

Target:	LILRA1
Alternative Name:	LILRA1 (LILRA1 Products)
Background:	Description: This gene encodes an activating member of the leukocyte immunoglobulin-like

Target Details

receptor (LIR) family, which is found in a gene cluster at chromosomal region 19q13.4. The encoded protein is predominantly expressed in B cells, interacts with major histocompatibility complex class I ligands, and contributes to the regulation of immune responses. Alternative splicing results in multiple transcript variants encoding different isoforms.

Aliases: LIR6, CD85I, LIR-6

Molecular Weight: 53.3 kDa

Gene ID: 11024

Application Details

Application Notes: ELISA: 1:10000, WB: 1:500 - 1:2000, FCM: 1:200 - 1:400, ICC: N/A, IHC: N/A

Restrictions: For Research Use only

Handling

Buffer: Purified antibody in PBS with 0.05 % sodium azide

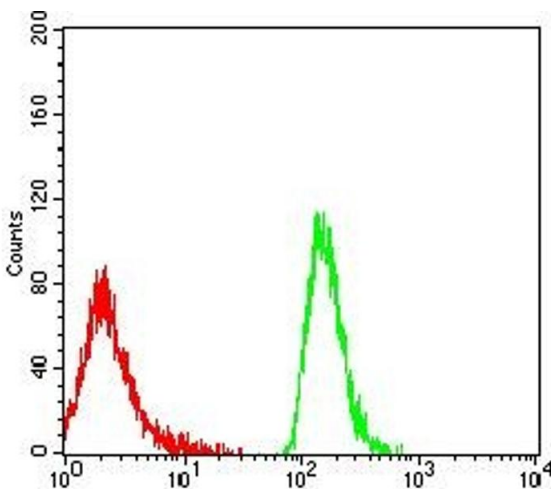
Preservative: Sodium azide

Precaution of Use: This product contains Sodium azide: a POISONOUS AND HAZARDOUS SUBSTANCE which should be handled by trained staff only.

Storage: 4 °C/-20 °C

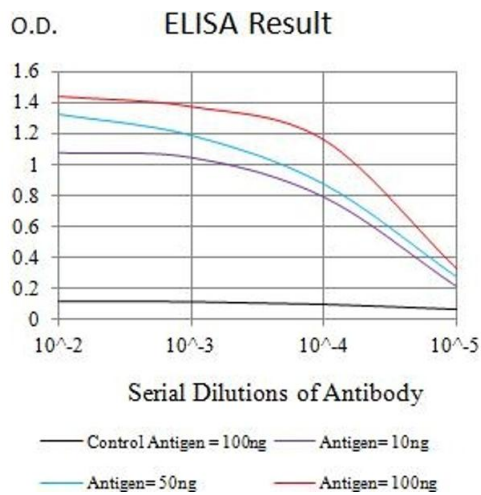
Storage Comment: 4°C, -20°C for long term storage

Images



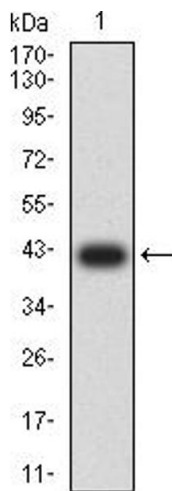
Flow Cytometry

Image 1. Flow cytometric analysis of MOLT4 cells using LILRA1 mouse mAb (green) and negative control (red).



ELISA

Image 2. Black line: Control Antigen (100 ng),Purple line: Antigen (10 ng), Blue line: Antigen (50 ng), Red line:Antigen (100 ng)



Western Blotting

Image 3. Western blot analysis using LILRA1 mAb against human LILRA1 (AA: extra 322-461) recombinant protein. (Expected MW is 41 kDa)

Please check the [product details page](#) for more images. Overall 4 images are available for ABIN7193344.