

Datasheet for ABIN7193356
anti-IGF2R antibody (AA 160-311)

4 Images

[Go to Product page](#)

Overview

| | |
|----------------------|---|
| Quantity: | 0.1 mg |
| Target: | IGF2R |
| Binding Specificity: | AA 160-311 |
| Reactivity: | Human |
| Host: | Mouse |
| Clonality: | Monoclonal |
| Conjugate: | This IGF2R antibody is un-conjugated |
| Application: | Western Blotting (WB), ELISA, Immunohistochemistry (IHC), Flow Cytometry (FACS), Immunocytochemistry (ICC), Neutralization (Neut) |

Product Details

| | |
|---------------|--|
| Immunogen: | Purified recombinant fragment of human CD222 (AA: 160-311) expressed in E. coli. |
| Clone: | 4F1G1 |
| Isotype: | IgG1 |
| Purification: | purified |

Target Details

| | |
|-------------------|--|
| Target: | IGF2R |
| Alternative Name: | CD222 (IGF2R Products) |
| Background: | Description: This gene encodes a receptor for both insulin-like growth factor 2 and mannose 6- |

Target Details

phosphate. The binding sites for each ligand are located on different segments of the protein. This receptor has various functions, including in the intracellular trafficking of lysosomal enzymes, the activation of transforming growth factor beta, and the degradation of insulin-like growth factor 2. Mutation or loss of heterozygosity of this gene has been association with risk of hepatocellular carcinoma. The orthologous mouse gene is imprinted and shows exclusive expression from the maternal allele, however, imprinting of the human gene may be polymorphic, as only a minority of individuals showed biased expression from the maternal allele (PMID:8267611). [provided by RefSeq, Nov 2015]

Aliases: IGF2R, MPR1, MPRI, CIMPR, M6P-R, MPR300, CI-M6PR, MPR 300, M6P/IGF2R

| | |
|-------------------|---------|
| Molecular Weight: | 274 kDa |
|-------------------|---------|

| | |
|----------|------|
| Gene ID: | 3482 |
|----------|------|

Application Details

| | |
|--------------------|--|
| Application Notes: | ELISA: 1:10000, WB: 1:500 - 1:2000, FCM: 1:200 - 1:400, ICC: N/A, IHC: N/A |
|--------------------|--|

| | |
|---------------|-----------------------|
| Restrictions: | For Research Use only |
|---------------|-----------------------|

Handling

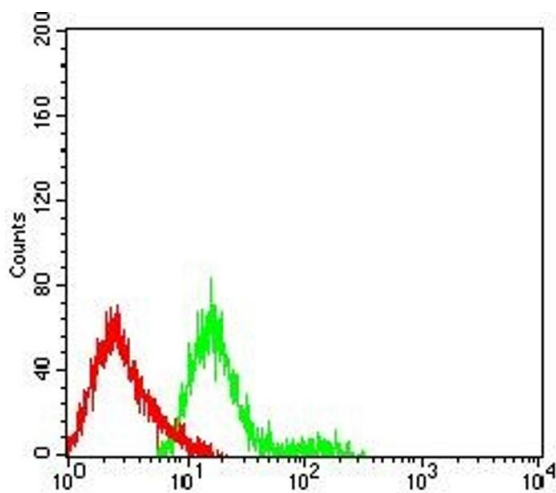
| | |
|---------|---|
| Buffer: | Purified antibody in PBS with 0.05 % sodium azide |
|---------|---|

| | |
|---------------|--------------|
| Preservative: | Sodium azide |
|---------------|--------------|

| | |
|--------------------|--|
| Precaution of Use: | This product contains Sodium azide: a POISONOUS AND HAZARDOUS SUBSTANCE which should be handled by trained staff only. |
|--------------------|--|

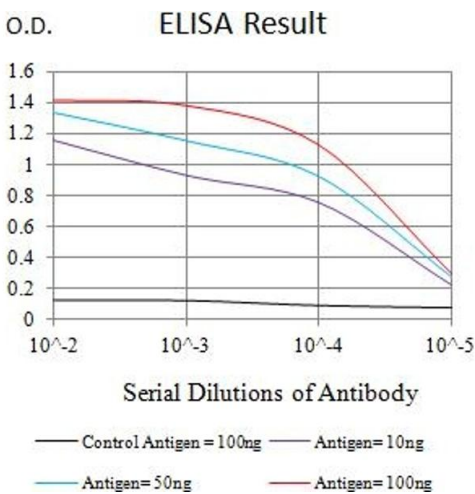
| | |
|----------|-------------|
| Storage: | 4 °C/-20 °C |
|----------|-------------|

| | |
|------------------|----------------------------------|
| Storage Comment: | 4°C, -20°C for long term storage |
|------------------|----------------------------------|



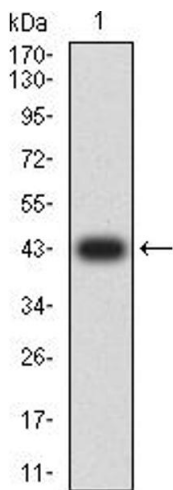
Flow Cytometry

Image 1. Flow cytometric analysis of HL-60 cells using CD222 mouse mAb (green) and negative control (red).



ELISA

Image 2. Black line: Control Antigen (100 ng),Purple line: Antigen (10 ng), Blue line: Antigen (50 ng), Red line:Antigen (100 ng)



Western Blotting

Image 3. Western blot analysis using CD222 mAb against human CD222 (AA: 160-311) recombinant protein. (Expected MW is 42.9 kDa)

Please check the [product details page](#) for more images. Overall 4 images are available for ABIN7193356.