

Datasheet for ABIN7193359

**anti-Plexin C1 antibody (AA 35-234)**[Go to Product page](#)

## 4 Images

## Overview

Quantity:	0.1 mg
Target:	Plexin C1 (PLXNC1)
Binding Specificity:	AA 35-234
Reactivity:	Human
Host:	Mouse
Clonality:	Monoclonal
Conjugate:	This Plexin C1 antibody is un-conjugated
Application:	Western Blotting (WB), ELISA, Immunohistochemistry (IHC), Flow Cytometry (FACS), Immunocytochemistry (ICC), Neutralization (Neut)

## Product Details

Immunogen:	Purified recombinant fragment of human CD232 (AA: extra 35-234) expressed in E. coli.
Clone:	2H11C11
Isotype:	IgG1
Purification:	purified

## Target Details

Target:	Plexin C1 (PLXNC1)
Alternative Name:	CD232 ( <a href="#">PLXNC1 Products</a> )
Background:	Description: This gene encodes a member of the plexin family. Plexins are transmembrane

## Target Details

receptors for semaphorins, a large family of proteins that regulate axon guidance, cell motility and migration, and the immune response. The encoded protein and its ligand regulate melanocyte adhesion, and viral semaphorins may modulate the immune response by binding to this receptor. The encoded protein may be a tumor suppressor protein for melanoma.

Alternatively spliced transcript variants have been observed for this gene. [provided by RefSeq, Jan 2011]

Aliases: PLXNC1, VESPR, PLXN-C1

Molecular Weight:	175.7 kDa
-------------------	-----------

Gene ID:	10154
----------	-------

## Application Details

Application Notes:	ELISA: 1:10000, WB: 1:500 - 1:2000, FCM: 1:200 - 1:400, ICC: N/A, IHC: N/A
--------------------	--

Restrictions:	For Research Use only
---------------	-----------------------

## Handling

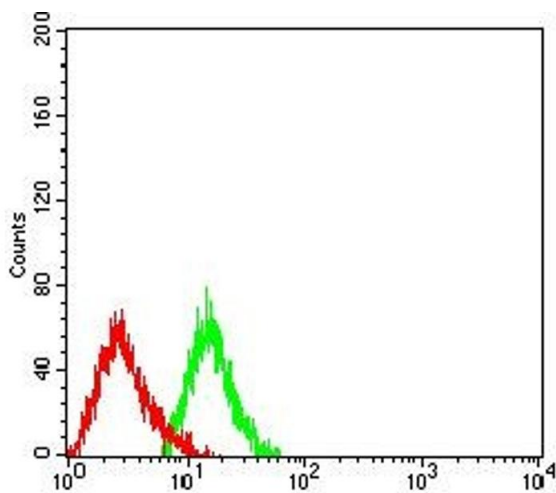
Buffer:	Purified antibody in PBS with 0.05 % sodium azide
---------	---

Preservative:	Sodium azide
---------------	--------------

Precaution of Use:	This product contains Sodium azide: a POISONOUS AND HAZARDOUS SUBSTANCE which should be handled by trained staff only.
--------------------	--

Storage:	4 °C/-20 °C
----------	-------------

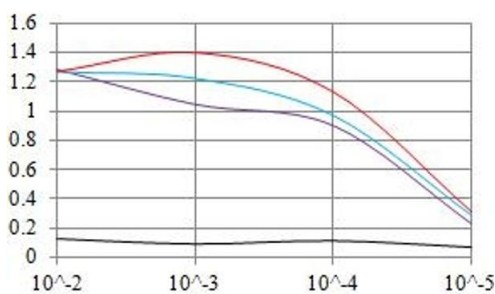
Storage Comment:	4°C, -20°C for long term storage
------------------	----------------------------------



### Flow Cytometry

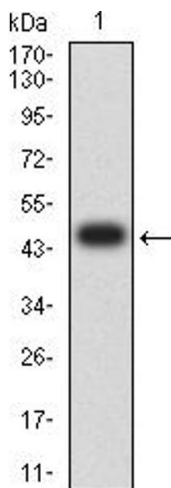
**Image 1.** Flow cytometric analysis of HL-60 cells using CD232 mouse mAb (green) and negative control (red).

### ELISA Result



Serial Dilutions of Antibody

— Control Antigen = 100ng — Antigen = 10ng  
— Antigen = 50ng — Antigen = 100ng



### ELISA

**Image 2.** Black line: Control Antigen (100 ng),Purple line: Antigen (10 ng), Blue line: Antigen (50 ng), Red line:Antigen (100 ng)

### Western Blotting

**Image 3.** Western blot analysis using CD232 mAb against human CD232 (AA: extra 35-234) recombinant protein. (Expected MW is 47.2 kDa)

Please check the [product details page](#) for more images. Overall 4 images are available for ABIN7193359.