

Datasheet for ABIN7193362
anti-FCRL5 antibody (AA 16-158)



[Go to Product page](#)

5 Images

Overview

Quantity:	100 µL
Target:	FCRL5
Binding Specificity:	AA 16-158
Reactivity:	Human
Host:	Mouse
Clonality:	Monoclonal
Conjugate:	This FCRL5 antibody is un-conjugated
Application:	ELISA, Flow Cytometry (FACS), Immunocytochemistry (ICC)

Product Details

Purpose:	CD307E Antibody
Immunogen:	Purified recombinant fragment of human CD307E (AA: 16-158) expressed in E. Coli.
Clone:	2A10H7
Isotype:	IgG1
Purification:	Purified antibody

Target Details

Target:	FCRL5
Alternative Name:	CD307E (FCRL5 Products)
Background:	Description:

Target Details

This gene encodes a member of the immunoglobulin receptor superfamily and the Fc-receptor like family. This gene and several other Fc receptor-like gene members are clustered on the long arm of chromosome 1. The encoded protein is a single-pass type I membrane protein and contains 8 immunoglobulin-like C2-type domains. This gene is implicated in B cell development and lymphomagenesis. Alternatively spliced transcript variants encoding different isoforms have been identified.

Aliases: FCRL5, CD307, FCRH5, IRTA2, BXMAS1, PRO820

Molecular Weight: 106.4kDa

Gene ID: 83416

UniProt: [Q96RD9](#)

Application Details

Application Notes: ELISA: 1/10000
FCM: 1/200 - 1/400
ICC: 1/200 - 1/1000

Restrictions: For Research Use only

Handling

Format: Liquid

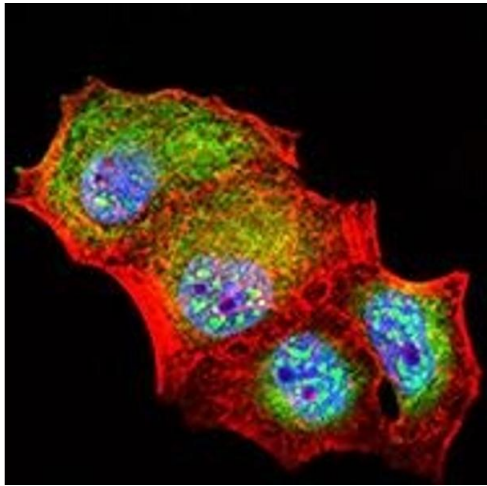
Buffer: Purified antibody in PBS with 0.05 % sodium azide.

Preservative: Sodium azide

Precaution of Use: This product contains Sodium azide: a POISONOUS AND HAZARDOUS SUBSTANCE which should be handled by trained staff only.

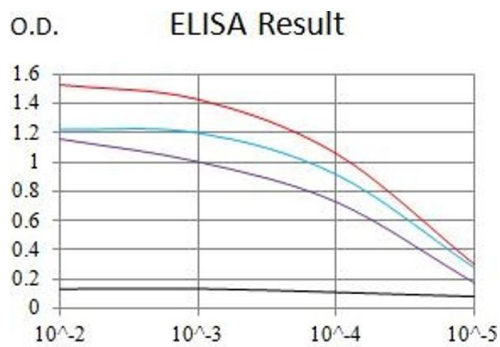
Storage: 4 °C,-20 °C

Storage Comment: Store at 4°C short term. Aliquot and store at -20°C long term. Avoid freeze/thaw cycles.



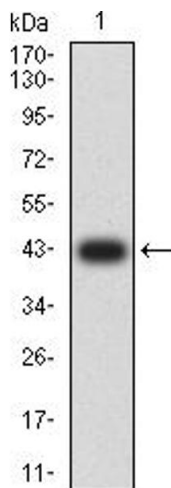
Immunofluorescence

Image 1. Immunofluorescence analysis of HeLa cells using CD307E mouse mAb (green). Blue: DRAQ5 fluorescent DNA dye. Red: Actin filaments have been labeled with Alexa Fluor- 555 phalloidin. Secondary antibody from Fisher (Cat#: 35503)



Serial Dilutions of Antibody

— Control Antigen = 100ng — Antigen = 10ng
 — Antigen = 50ng — Antigen = 100ng



ELISA

Image 2. Black line: Control Antigen (100 ng),Purple line: Antigen (10 ng), Blue line: Antigen (50 ng), Red line:Antigen (100 ng)

Western Blotting

Image 3. Western blot analysis using CD307E mAb against human CD307E (AA: extra 16-158) recombinant protein. (Expected MW is 42.4 kDa)

Please check the [product details page](#) for more images. Overall 5 images are available for ABIN7193362.