



[Go to Product page](#)

Datasheet for ABIN7193368  
**anti-TLR3 antibody (AA 24-217)**

4 Images

### Overview

Quantity:	0.1 mg
Target:	TLR3
Binding Specificity:	AA 24-217
Reactivity:	Human
Host:	Mouse
Clonality:	Monoclonal
Conjugate:	This TLR3 antibody is un-conjugated
Application:	Western Blotting (WB), Immunohistochemistry (IHC), ELISA, Flow Cytometry (FACS), Immunocytochemistry (ICC), Neutralization (Neut)

### Product Details

Immunogen:	Purified recombinant fragment of human CD283 (AA: 24-217) expressed in E. coli.
Clone:	6F3G4
Isotype:	IgG1
Purification:	purified

### Target Details

Target:	TLR3
Alternative Name:	CD283 ( <a href="#">TLR3 Products</a> )
Background:	Description: The protein encoded by this gene is a member of the Toll-like receptor (TLR) family

## Target Details

---

which plays a fundamental role in pathogen recognition and activation of innate immunity. TLRs are highly conserved from *Drosophila* to humans and share structural and functional similarities. They recognize pathogen-associated molecular patterns (PAMPs) that are expressed on infectious agents, and mediate the production of cytokines necessary for the development of effective immunity. The various TLRs exhibit different patterns of expression. This receptor is most abundantly expressed in placenta and pancreas, and is restricted to the dendritic subpopulation of the leukocytes. It recognizes dsRNA associated with viral infection, and induces the activation of NF-kappaB and the production of type I interferons. It may thus play a role in host defense against viruses. Use of alternative polyadenylation sites to generate different length transcripts has been noted for this gene. [provided by RefSeq, Jul 2008]

Aliases: TLR3 , IIAE2

---

Molecular Weight: 103.8 kDa

---

Gene ID: 7098

---

Pathways: [TLR Signaling](#), [Activation of Innate immune Response](#), [Hepatitis C](#), [Toll-Like Receptors Cascades](#)

## Application Details

---

Application Notes: ELISA: 1:10000, WB: 1:500 - 1:2000, FCM: 1:200 - 1:400, ICC: N/A, IHC: N/A

---

Restrictions: For Research Use only

## Handling

---

Buffer: Purified antibody in PBS with 0.05 % sodium azide

---

Preservative: Sodium azide

---

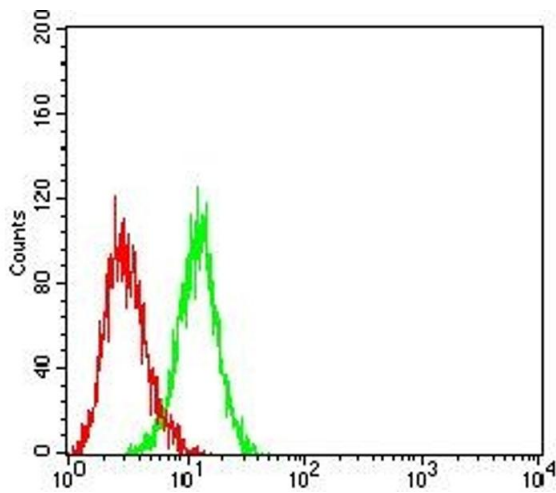
Precaution of Use: This product contains Sodium azide: a POISONOUS AND HAZARDOUS SUBSTANCE which should be handled by trained staff only.

---

Storage: 4 °C/-20 °C

---

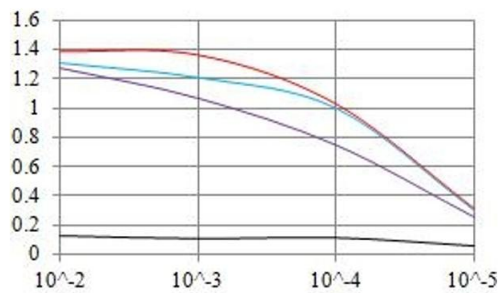
Storage Comment: 4°C, -20°C for long term storage



### Flow Cytometry

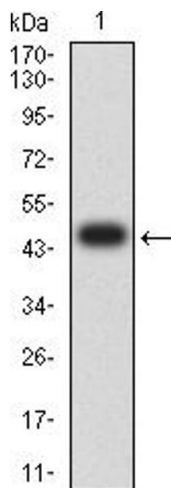
**Image 1.** Flow cytometric analysis of HL-60 cells using CD283 mouse mAb (green) and negative control (red).

### O.D. ELISA Result



### Serial Dilutions of Antibody

— Control Antigen = 100ng — Antigen = 10ng  
 — Antigen = 50ng — Antigen = 100ng



### ELISA

**Image 2.** Black line: Control Antigen (100 ng), Purple line: Antigen (10 ng), Blue line: Antigen (50 ng), Red line: Antigen (100 ng)

### Western Blotting

**Image 3.** Western blot analysis using CD283 mAb against human CD283 (AA: 24-217) recombinant protein. (Expected MW is 47.5 kDa)

Please check the [product details page](#) for more images. Overall 4 images are available for ABIN7193368.