



[Go to Product page](#)

Datasheet for ABIN7193370
anti-MTA1 antibody (AA 541-715)

5 Images

Overview

Quantity:	0.1 mg
Target:	MTA1
Binding Specificity:	AA 541-715
Reactivity:	Human
Host:	Mouse
Clonality:	Monoclonal
Conjugate:	This MTA1 antibody is un-conjugated
Application:	Western Blotting (WB), ELISA, Immunohistochemistry (IHC), Immunocytochemistry (ICC), Flow Cytometry (FACS), Neutralization (Neut)

Product Details

Immunogen:	Purified recombinant fragment of human MTA1 (AA: 541-715) expressed in E. coli.
Clone:	6B1E9
Isotype:	IgG2b
Purification:	purified

Target Details

Target:	MTA1
Alternative Name:	MTA1 (MTA1 Products)
Background:	Description: This gene encodes a protein that was identified in a screen for genes expressed in

Target Details

metastatic cells, specifically, mammary adenocarcinoma cell lines. Expression of this gene has been correlated with the metastatic potential of at least two types of carcinomas although it is also expressed in many normal tissues. The role it plays in metastasis is unclear. It was initially thought to be the 70kD component of a nucleosome remodeling deacetylase complex, NuRD, but it is more likely that this component is a different but very similar protein. These two proteins are so closely related, though, that they share the same types of domains. These domains include two DNA binding domains, a dimerization domain, and a domain commonly found in proteins that methylate DNA. The profile and activity of this gene product suggest that it is involved in regulating transcription and that this may be accomplished by chromatin remodeling. Two transcript variants encoding different isoforms have been found for this gene. [provided by RefSeq, Feb 2011]

Aliases: null

Molecular Weight: 80.8 kDa

Gene ID: 9112

Pathways: [Chromatin Binding](#)

Application Details

Application Notes: ELISA: 1:10000, WB: 1:500 - 1:2000, FCM: 1:200 - 1:400, ICC: N/A, IHC: N/A

Restrictions: For Research Use only

Handling

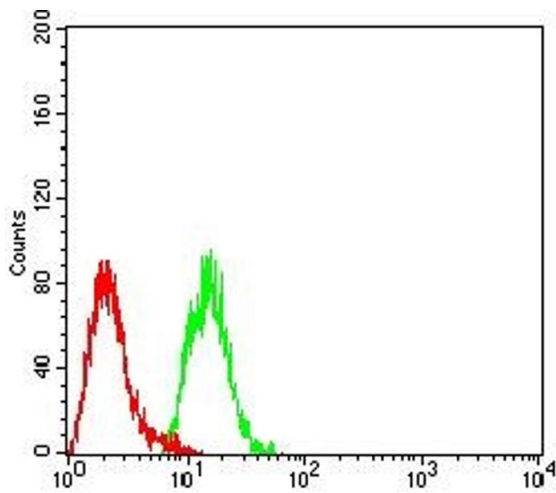
Buffer: Purified antibody in PBS with 0.05 % sodium azide

Preservative: Sodium azide

Precaution of Use: This product contains Sodium azide: a POISONOUS AND HAZARDOUS SUBSTANCE which should be handled by trained staff only.

Storage: 4 °C/-20 °C

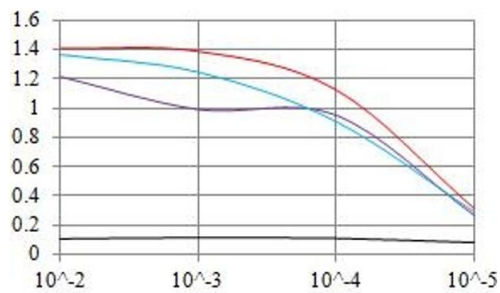
Storage Comment: 4°C, -20°C for long term storage



Flow Cytometry

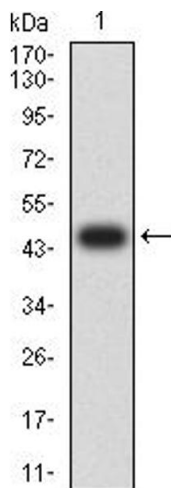
Image 1. Flow cytometric analysis of Hela cells using MTA1 mouse mAb (green) and negative control (red).

O.D. ELISA Result



Serial Dilutions of Antibody

— Control Antigen = 100ng — Antigen = 10ng
 — Antigen = 50ng — Antigen = 100ng



ELISA

Image 2. Black line: Control Antigen (100 ng), Purple line: Antigen (10 ng), Blue line: Antigen (50 ng), Red line: Antigen (100 ng)

Western Blotting

Image 3. Western blot analysis using MTA1 mAb against human MTA1 (AA: 541-715) recombinant protein. (Expected MW is 45.3 kDa)

Please check the [product details page](#) for more images. Overall 5 images are available for ABIN7193370.