



[Go to Product page](#)

Datasheet for ABIN7193376
anti-MLL3 antibody (AA 1-205)

4 Images

Overview

Quantity:	0.1 mg
Target:	MLL3 (KMT2C)
Binding Specificity:	AA 1-205
Reactivity:	Human
Host:	Mouse
Clonality:	Monoclonal
Conjugate:	This MLL3 antibody is un-conjugated
Application:	Western Blotting (WB), ELISA, Flow Cytometry (FACS), Immunocytochemistry (ICC), Immunohistochemistry (IHC), Neutralization (Neut)

Product Details

Immunogen:	Purified recombinant fragment of human KMT2C (AA: 1-205) expressed in E. coli.
Clone:	7D5D7
Isotype:	IgG1
Purification:	purified

Target Details

Target:	MLL3 (KMT2C)
Alternative Name:	KMT2C (KMT2C Products)
Background:	Description: This gene is a member of the myeloid/lymphoid or mixed-lineage leukemia (MLL)

Target Details

family and encodes a nuclear protein with an AT hook DNA-binding domain, a DHHC-type zinc finger, six PHD-type zinc fingers, a SET domain, a post-SET domain and a RING-type zinc finger. This protein is a member of the ASC-2/NCOA6 complex (ASCOM), which possesses histone methylation activity and is involved in transcriptional coactivation. [provided by RefSeq, Jul 2008]

Aliases: HALR, MLL3, KLEFS2

Molecular Weight: 541.4 kDa

Gene ID: 58508

Pathways: [Warburg Effect](#)

Application Details

Application Notes: ELISA: 1:10000, WB: 1:500 - 1:2000, FCM: 1:200 - 1:400, ICC: N/A, IHC: N/A

Restrictions: For Research Use only

Handling

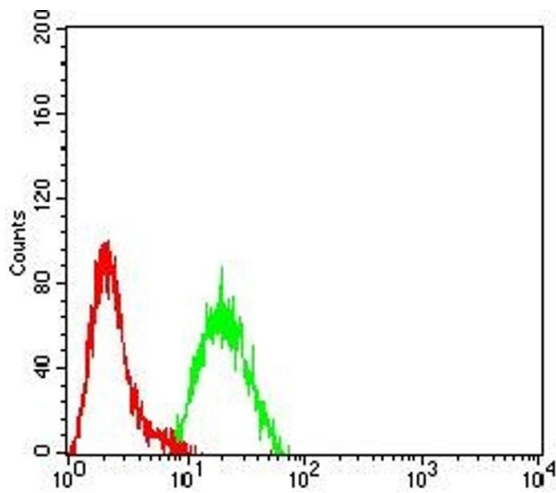
Buffer: Purified antibody in PBS with 0.05 % sodium azide

Preservative: Sodium azide

Precaution of Use: This product contains Sodium azide: a POISONOUS AND HAZARDOUS SUBSTANCE which should be handled by trained staff only.

Storage: 4 °C/-20 °C

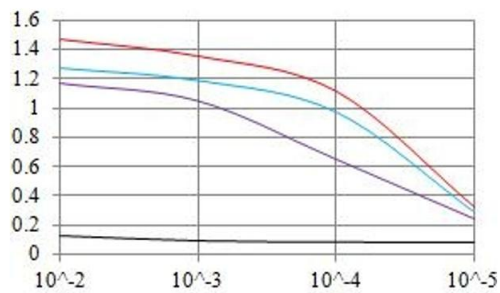
Storage Comment: 4°C, -20°C for long term storage



Flow Cytometry

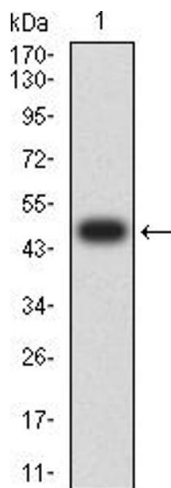
Image 1. Flow cytometric analysis of HeLa cells using KMT2C mouse mAb (green) and negative control (red).

O.D. ELISA Result



Serial Dilutions of Antibody

— Control Antigen = 100ng — Antigen = 10ng
 — Antigen = 50ng — Antigen = 100ng



ELISA

Image 2. Black line: Control Antigen (100 ng), Purple line: Antigen (10 ng), Blue line: Antigen (50 ng), Red line: Antigen (100 ng)

Western Blotting

Image 3. Western blot analysis using KMT2C mAb against human KMT2C (AA: 1-205) recombinant protein. (Expected MW is 48.6 kDa)

Please check the [product details page](#) for more images. Overall 4 images are available for ABIN7193376.