

Datasheet for ABIN7193377
anti-MLL3 antibody (AA 1-205)



[Go to Product page](#)

6 Images

Overview

Quantity:	100 µL
Target:	MLL3 (KMT2C)
Binding Specificity:	AA 1-205
Reactivity:	Human
Host:	Mouse
Clonality:	Monoclonal
Conjugate:	This MLL3 antibody is un-conjugated
Application:	ELISA, Flow Cytometry (FACS), Immunocytochemistry (ICC), Immunohistochemistry (IHC)

Product Details

Purpose:	KMT2C Antibody
Immunogen:	Purified recombinant fragment of human KMT2C (AA: 1-205) expressed in E. Coli.
Clone:	6D1B9
Isotype:	IgG1
Purification:	Purified antibody

Target Details

Target:	MLL3 (KMT2C)
Alternative Name:	KMT2C (KMT2C Products)
Background:	Description:

Target Details

This gene is a member of the myeloid/lymphoid or mixed-lineage leukemia (MLL) family and encodes a nuclear protein with an AT hook DNA-binding domain, a DHHC-type zinc finger, six PHD-type zinc fingers, a SET domain, a post-SET domain and a RING-type zinc finger. This protein is a member of the ASC-2/NCOA6 complex (ASCOM), which possesses histone methylation activity and is involved in transcriptional coactivation. [provided by RefSeq, Jul 2008]

Aliases: HALR, MLL3, KLEFS2

Molecular Weight: 541.4kDa

Gene ID: 58508

UniProt: [Q8NEZ4](#)

Pathways: [Warburg Effect](#)

Application Details

Application Notes: ELISA: 1/10000
FCM: 1/200 - 1/400
ICC: 1/200 - 1/1000

Restrictions: For Research Use only

Handling

Format: Liquid

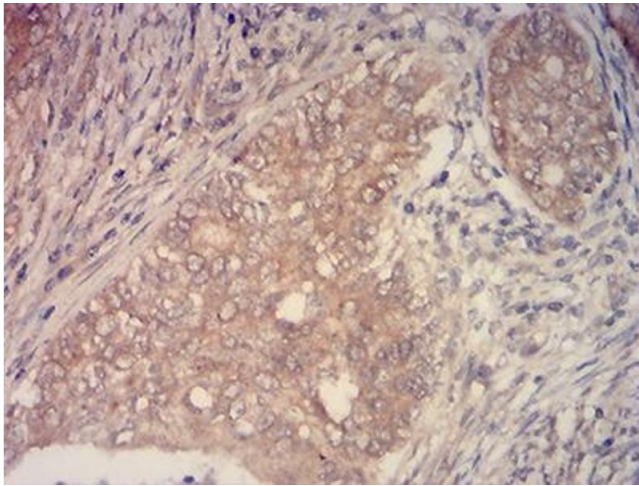
Buffer: Purified antibody in PBS with 0.05 % sodium azide.

Preservative: Sodium azide

Precaution of Use: This product contains Sodium azide: a POISONOUS AND HAZARDOUS SUBSTANCE which should be handled by trained staff only.

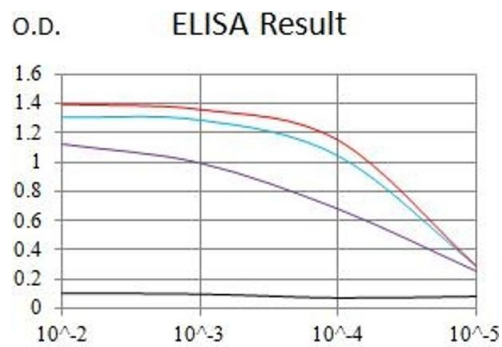
Storage: 4 °C, -20 °C

Storage Comment: Store at 4°C short term. Aliquot and store at -20°C long term. Avoid freeze/thaw cycles.



Immunohistochemistry

Image 1. Immunohistochemical analysis of paraffin-embedded cervical cancer tissues using KMT2C mouse mAb with DAB staining.

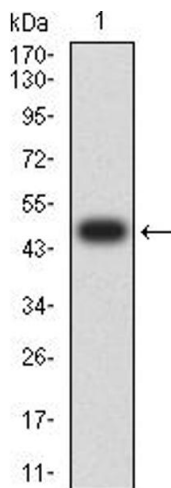


ELISA

Image 2. Black line: Control Antigen (100 ng), Purple line: Antigen (10 ng), Blue line: Antigen (50 ng), Red line: Antigen (100 ng)

Serial Dilutions of Antibody

— Control Antigen = 100ng — Antigen = 10ng
 — Antigen = 50ng — Antigen = 100ng



Western Blotting

Image 3. Western blot analysis using KMT2C mAb against human KMT2C (AA: 1-205) recombinant protein. (Expected MW is 48.6 kDa)

Please check the [product details page](#) for more images. Overall 6 images are available for ABIN7193377.