

Datasheet for ABIN7193380

**anti-CXCR1 antibody****3** Images[Go to Product page](#)

## Overview

Quantity:	0.1 mg
Target:	CXCR1
Reactivity:	Human
Host:	Mouse
Clonality:	Monoclonal
Conjugate:	This CXCR1 antibody is un-conjugated
Application:	Western Blotting (WB), ELISA, Immunohistochemistry (IHC), Flow Cytometry (FACS), Immunocytochemistry (ICC), Neutralization (Neut)

## Product Details

Immunogen:	Purified recombinant fragment of human CD181 expressed in E. coli.
Clone:	2B8A1
Isotype:	IgG2b
Purification:	purified

## Target Details

Target:	CXCR1
Alternative Name:	CD181 ( <a href="#">CXCR1 Products</a> )
Background:	Description: The protein encoded by this gene is a member of the G-protein-coupled receptor family. This protein is a receptor for interleukin 8 (IL8). It binds to IL8 with high affinity, and transduces the signal through a G-protein activated second messenger system. Knockout

## Target Details

studies in mice suggested that this protein inhibits embryonic oligodendrocyte precursor migration in developing spinal cord. This gene, IL8RB, a gene encoding another high affinity IL8 receptor, as well as IL8RBP, a pseudogene of IL8RB, form a gene cluster in a region mapped to chromosome 2q33-q36. [provided by RefSeq, Jul 2008]

Aliases: CXCR1, C-C, CD128, CKR-1, IL8R1, IL8RA, CMKAR1, IL8RBA, CDw128a, C-C-CKR-1

Molecular Weight: 39.8 kDa

Gene ID: 3577

Pathways: [cAMP Metabolic Process](#)

## Application Details

Application Notes: ELISA: 1:10000, WB: 1:500 - 1:2000, FCM: N/A, ICC: N/A, IHC: N/A

Restrictions: For Research Use only

## Handling

Buffer: Purified antibody in PBS with 0.05 % sodium azide

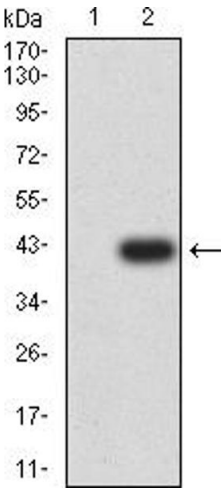
Preservative: Sodium azide

Precaution of Use: This product contains Sodium azide: a POISONOUS AND HAZARDOUS SUBSTANCE which should be handled by trained staff only.

Storage: 4 °C/-20 °C

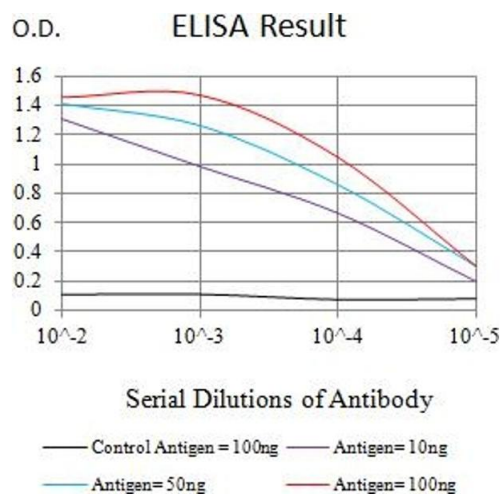
Storage Comment: 4°C, -20°C for long term storage

## Images



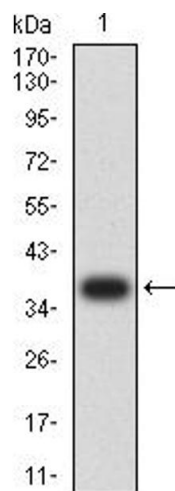
### Western Blotting

**Image 1.** Western blot analysis using CD181 mAb against HEK293 (1) and CD181-hlgGfC transfected HEK293 (2) cell lysate.



ELISA

**Image 2.** Black line: Control Antigen (100 ng),Purple line: Antigen (10 ng), Blue line: Antigen (50 ng), Red line:Antigen (100 ng)



Western Blotting

**Image 3.** Western blot analysis using CD181 mAb against human CD181 recombinant protein. (Expected MW is 37.5 kDa)