

Datasheet for ABIN7193381
anti-LAIR2 antibody (AA 22-152)

3 Images

[Go to Product page](#)

Overview

Quantity:	0.1 mg
Target:	LAIR2
Binding Specificity:	AA 22-152
Reactivity:	Human
Host:	Mouse
Clonality:	Monoclonal
Conjugate:	This LAIR2 antibody is un-conjugated
Application:	Western Blotting (WB), ELISA, Immunohistochemistry (IHC), Immunocytochemistry (ICC), Flow Cytometry (FACS), Neutralization (Neut)

Product Details

Immunogen:	Purified recombinant fragment of human CD306 (AA: 22-152) expressed in E. coli.
Clone:	8C12B6
Isotype:	IgG1
Purification:	purified

Target Details

Target:	LAIR2
Alternative Name:	CD306 (LAIR2 Products)
Background:	Description: The protein encoded by this gene is a member of the immunoglobulin superfamily.

Target Details

It was identified by its similarity to leukocyte-associated immunoglobulin-like receptor 1, a membrane-bound receptor that modulates innate immune response. The protein encoded by this locus is a soluble receptor that may play roles in both inhibition of collagen-induced platelet aggregation and vessel formation during placental implantation. This gene maps to a region of 19q13.4, termed the leukocyte receptor cluster, which contains 29 genes in the immunoglobulin superfamily. Alternatively spliced transcript variants have been described for this gene.

[provided by RefSeq, Sep 2013]

Aliases: LAIR2

Molecular Weight:	16.3 kDa
-------------------	----------

Gene ID:	3904
----------	------

Application Details

Application Notes:	ELISA: 1:10000, WB: 1:500 - 1:2000, FCM: N/A, ICC: N/A, IHC: N/A
--------------------	--

Restrictions:	For Research Use only
---------------	-----------------------

Handling

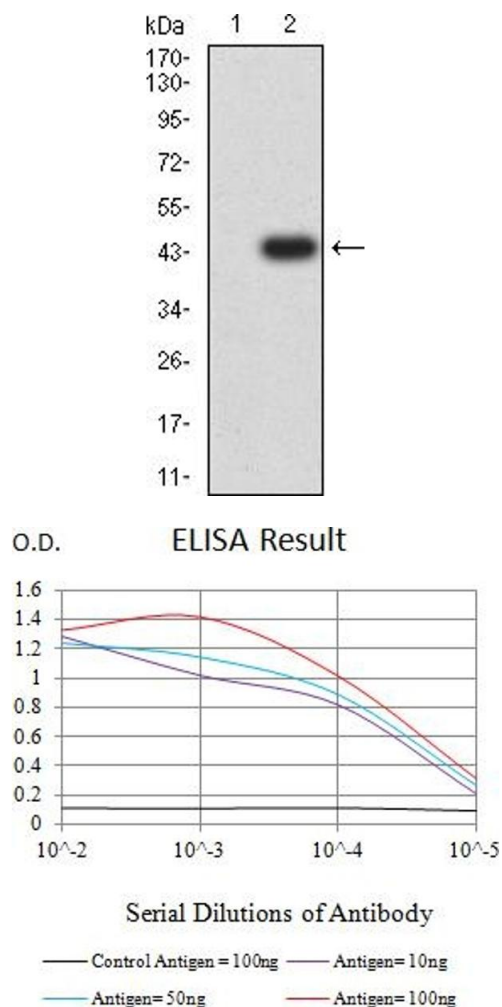
Buffer:	Purified antibody in PBS with 0.05 % sodium azide
---------	---

Preservative:	Sodium azide
---------------	--------------

Precaution of Use:	This product contains Sodium azide: a POISONOUS AND HAZARDOUS SUBSTANCE which should be handled by trained staff only.
--------------------	--

Storage:	4 °C/-20 °C
----------	-------------

Storage Comment:	4°C, -20°C for long term storage
------------------	----------------------------------



Western Blotting

Image 1. Western blot analysis using CD306 mAb against HEK293 (1) and CD306 (AA: 22-152)-hlgGFc transfected HEK293 (2) cell lysate.

ELISA

Image 2. Black line: Control Antigen (100 ng),Purple line: Antigen (10 ng), Blue line: Antigen (50 ng), Red line:Antigen (100 ng)

Western Blotting

Image 3. Western blot analysis using CD306 mAb against human CD306 (AA: 22-152) recombinant protein. (Expected MW is 40 kDa)