



[Go to Product page](#)

Datasheet for ABIN7193382

anti-CLEC10A antibody (AA 158-316)

4 Images

Overview

| | |
|----------------------|---|
| Quantity: | 0.1 mg |
| Target: | CLEC10A |
| Binding Specificity: | AA 158-316 |
| Reactivity: | Human |
| Host: | Mouse |
| Clonality: | Monoclonal |
| Conjugate: | This CLEC10A antibody is un-conjugated |
| Application: | Western Blotting (WB), Flow Cytometry (FACS), ELISA, Immunohistochemistry (IHC), Immunocytochemistry (ICC), Neutralization (Neut) |

Product Details

| | |
|---------------|--|
| Immunogen: | Purified recombinant fragment of human CD301 (AA: extra 158-316) expressed in E. coli. |
| Clone: | 2C5C6F10 |
| Isotype: | IgG1 |
| Purification: | purified |

Target Details

| | |
|-------------------|--|
| Target: | CLEC10A |
| Alternative Name: | CD301 (CLEC10A Products) |
| Background: | Description: This gene encodes a member of the C-type lectin/C-type lectin-like domain |

Target Details

(CTL/CTLD) superfamily. Members of this family share a common protein fold and have diverse functions, such as cell adhesion, cell-cell signalling, glycoprotein turnover, and roles in inflammation and immune response. The encoded type 2 transmembrane protein may function as a cell surface antigen. Two transcript variants encoding distinct isoforms have been identified for this gene. [provided by RefSeq, Jul 2008]

Aliases: CLEC10A, HML, MGL, HML2, CLECSF13, CLECSF14

Molecular Weight: 35.4 kDa

Gene ID: 10462

Application Details

Application Notes: ELISA: 1:10000, WB: 1:500 - 1:2000, FCM: 1:200 - 1:400, ICC: N/A, IHC: N/A

Restrictions: For Research Use only

Handling

Buffer: Purified antibody in PBS with 0.05 % sodium azide

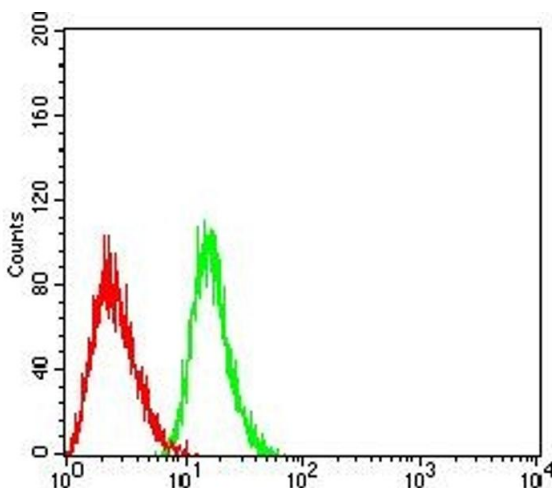
Preservative: Sodium azide

Precaution of Use: This product contains Sodium azide: a POISONOUS AND HAZARDOUS SUBSTANCE which should be handled by trained staff only.

Storage: 4 °C/-20 °C

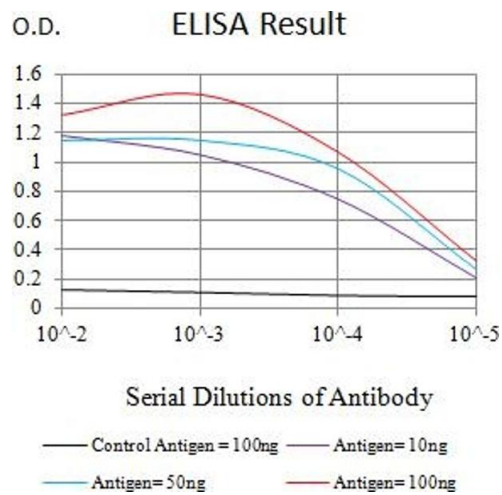
Storage Comment: 4°C, -20°C for long term storage

Images



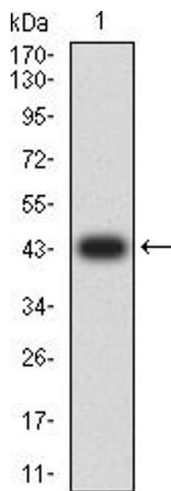
Flow Cytometry

Image 1. Flow cytometric analysis of HL-60 cells using CD301 mouse mAb (green) and negative control (red).



ELISA

Image 2. Black line: Control Antigen (100 ng),Purple line: Antigen (10 ng), Blue line: Antigen (50 ng), Red line:Antigen (100 ng)



Western Blotting

Image 3. Western blot analysis using CD301 mAb against human CD301 (AA: extra 158-316) recombinant protein. (Expected MW is 44 kDa)

Please check the [product details page](#) for more images. Overall 4 images are available for ABIN7193382.