

Datasheet for ABIN7193384  
**anti-MLL/KMT2A antibody (AA 801-956)**[Go to Product page](#)

## 3 Images

## Overview

Quantity:	0.1 mg
Target:	MLL/KMT2A (MLL)
Binding Specificity:	AA 801-956
Reactivity:	Human
Host:	Mouse
Clonality:	Monoclonal
Conjugate:	This MLL/KMT2A antibody is un-conjugated
Application:	Western Blotting (WB), ELISA, Immunohistochemistry (IHC), Flow Cytometry (FACS), Immunocytochemistry (ICC), Neutralization (Neut)

## Product Details

Immunogen:	Purified recombinant fragment of human KMT2A (AA: 801-956) expressed in E. coli.
Clone:	4A5A12
Isotype:	IgG1
Purification:	purified

## Target Details

Target:	MLL/KMT2A (MLL)
Alternative Name:	KMT2A ( <a href="#">MLL Products</a> )
Background:	Description: This gene encodes a transcriptional coactivator that plays an essential role in

## Target Details

regulating gene expression during early development and hematopoiesis. The encoded protein contains multiple conserved functional domains. One of these domains, the SET domain, is responsible for its histone H3 lysine 4 (H3K4) methyltransferase activity which mediates chromatin modifications associated with epigenetic transcriptional activation. This protein is processed by the enzyme Taspase 1 into two fragments, MLL-C and MLL-N. These fragments reassociate and further assemble into different multiprotein complexes that regulate the transcription of specific target genes, including many of the HOX genes. Multiple chromosomal translocations involving this gene are the cause of certain acute lymphoid leukemias and acute myeloid leukemias. Alternate splicing results in multiple transcript variants.[provided by RefSeq, Oct 2010]

Aliases: HRX, MLL, MLL1, TRX1, ALL-1, CXXC7, HTRX1, MLL1A, WDSTS

Molecular Weight:	431.7 kDa
-------------------	-----------

Gene ID:	4297
----------	------

Pathways:	<a href="#">Warburg Effect</a>
-----------	--------------------------------

## Application Details

Application Notes:	ELISA: 1:10000, WB: 1:500 - 1:2000, FCM: N/A, ICC: N/A, IHC: N/A
--------------------	--

Restrictions:	For Research Use only
---------------	-----------------------

## Handling

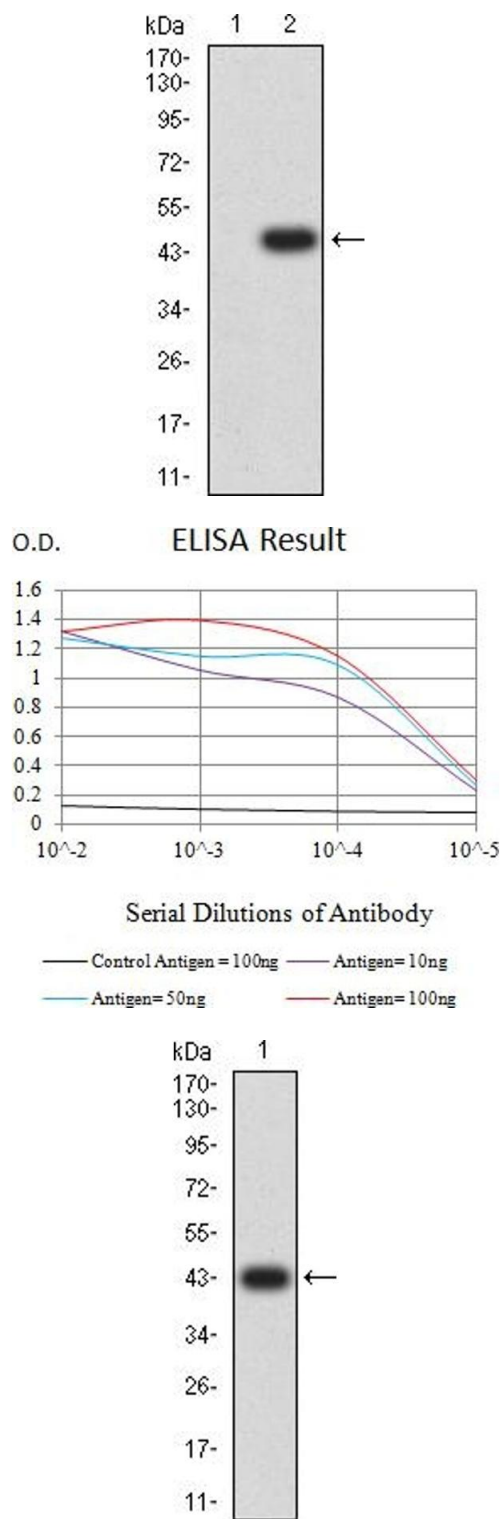
Buffer:	Purified antibody in PBS with 0.05 % sodium azide
---------	---

Preservative:	Sodium azide
---------------	--------------

Precaution of Use:	This product contains Sodium azide: a POISONOUS AND HAZARDOUS SUBSTANCE which should be handled by trained staff only.
--------------------	--

Storage:	4 °C/-20 °C
----------	-------------

Storage Comment:	4°C, -20°C for long term storage
------------------	----------------------------------



Western Blotting

**Image 1.** Western blot analysis using KMT2A mAb against HEK293 (1) and KMT2A (AA: 801-956)-hlgGFc transfected HEK293 (2) cell lysate.

ELISA

**Image 2.** Black line: Control Antigen (100 ng),Purple line: Antigen (10 ng), Blue line: Antigen (50 ng), Red line:Antigen (100 ng)

Western Blotting

**Image 3.** Western blot analysis using KMT2A mAb against human KMT2A (AA: 801-956) recombinant protein. (Expected MW is 43.1 kDa)