



[Go to Product page](#)

Datasheet for ABIN7193387  
**anti-CD80 antibody (AA 35-288)**

4 Images

### Overview

|                      |   |
|----------------------|---|
| Quantity:            | 0.1 mg  |
| Target:              | CD80  |
| Binding Specificity: | AA 35-288   |
| Reactivity:          | Human   |
| Host:                | Mouse   |
| Clonality:           | Monoclonal  |
| Conjugate:           | This CD80 antibody is un-conjugated   |
| Application:         | Flow Cytometry (FACS), Western Blotting (WB), ELISA, Immunohistochemistry (IHC), Immunocytochemistry (ICC), Neutralization (Neut) |

### Product Details

|               |  |
|---------------|--|
| Immunogen:    | Purified recombinant fragment of human CD80 (AA: 35-288) expressed in E. coli. |
| Clone:        | 1G3D7  |
| Isotype:      | IgG1   |
| Purification: | purified   |

### Target Details

|                   |   |
|-------------------|---|
| Target:           | CD80  |
| Alternative Name: | CD80 ( <a href="#">CD80 Products</a> )  |
| Background:       | Description: The protein encoded by this gene is a membrane receptor that is activated by the |

## Target Details

---

binding of CD28 or CTLA-4. The activated protein induces T-cell proliferation and cytokine production. This protein can act as a receptor for adenovirus subgroup B and may play a role in lupus neuropathy. [provided by RefSeq, Aug 2011]

Aliases: B7, BB1, B7-1, B7.1, LAB7, CD28LG, CD28LG1

---

Molecular Weight: 33 kDa

---

Gene ID: 941

---

Pathways: [TCR Signaling](#), [Fc-epsilon Receptor Signaling Pathway](#), [EGFR Signaling Pathway](#), [Neurotrophin Signaling Pathway](#), [Positive Regulation of Immune Effector Process](#), [Cancer Immune Checkpoints](#)

---

## Application Details

---

Application Notes: ELISA: 1:10000, WB: 1:500 - 1:2000, FCM: 1:200 - 1:400, ICC: N/A, IHC: 1:200 - 1:1000

---

Restrictions: For Research Use only

---

## Handling

---

Buffer: Purified antibody in PBS with 0.05 % sodium azide

---

Preservative: Sodium azide

---

Precaution of Use: This product contains Sodium azide: a POISONOUS AND HAZARDOUS SUBSTANCE which should be handled by trained staff only.

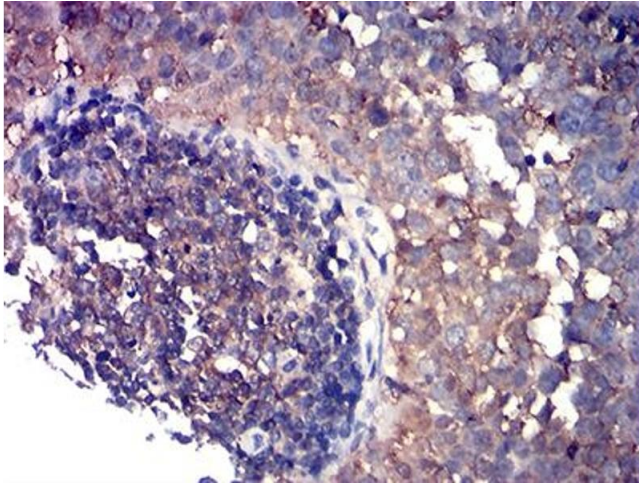
---

Storage: 4 °C/-20 °C

---

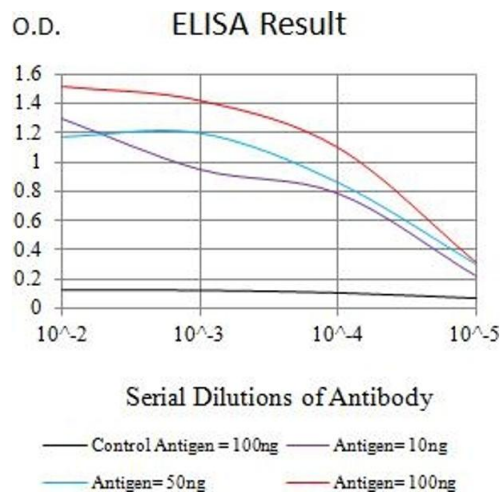
Storage Comment: 4°C, -20°C for long term storage

---



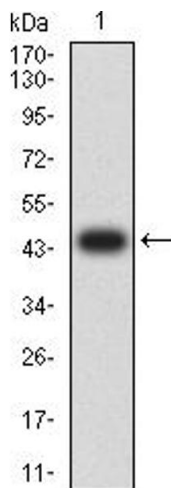
### Immunohistochemistry

**Image 1.** Immunohistochemical analysis of paraffin-embedded cervical cancer tissues using CD80 mouse mAb with DAB staining.



### ELISA

**Image 2.** Black line: Control Antigen (100 ng), Purple line: Antigen (10 ng), Blue line: Antigen (50 ng), Red line: Antigen (100 ng)



### Western Blotting

**Image 3.** Western blot analysis using CD80 mAb against human CD80 (AA: 35-288) recombinant protein. (Expected MW is 45 kDa)

Please check the [product details page](#) for more images. Overall 4 images are available for ABIN7193387.