



[Go to Product page](#)

Datasheet for ABIN7193389
anti-HTRA2 antibody (AA 278-458)

7 Images

Overview

Quantity:	0.1 mg
Target:	HTRA2
Binding Specificity:	AA 278-458
Reactivity:	Human, Mouse, Rat
Host:	Mouse
Clonality:	Monoclonal
Application:	Western Blotting (WB), ELISA, Immunohistochemistry (IHC), Immunocytochemistry (ICC), Flow Cytometry (FACS), Neutralization (Neut)

Product Details

Immunogen:	Purified recombinant fragment of human HTRA2 (AA: 278-458) expressed in E. coli.
Clone:	6H7A8
Isotype:	IgG1
Purification:	purified

Target Details

Target:	HTRA2
Alternative Name:	HTRA2 (HTRA2 Products)
Background:	Description: This gene encodes a serine protease. The protein has been localized in the endoplasmic reticulum and interacts with an alternatively spliced form of mitogen-activated protein kinase 14. The protein has also been localized to the mitochondria with release to the

Target Details

cytosol following apoptotic stimulus. The protein is thought to induce apoptosis by binding the apoptosis inhibitory protein baculoviral IAP repeat-containing 4. Nuclear localization of this protein has also been observed. Alternate splicing of this gene results in multiple transcript variants encoding different isoforms. [provided by RefSeq, Mar 2016]

Aliases: OMI, MGCA8, PARK13, PRSS25

Molecular Weight: 48.8 kDa

Gene ID: 27429

Pathways: [Positive Regulation of Endopeptidase Activity](#)

Application Details

Application Notes: ELISA: 1:10000, WB: 1:500 - 1:2000, FCM: 1:200 - 1:400, ICC: N/A, IHC: 1:200 - 1:1000

Restrictions: For Research Use only

Handling

Buffer: Purified antibody in PBS with 0.05 % sodium azide

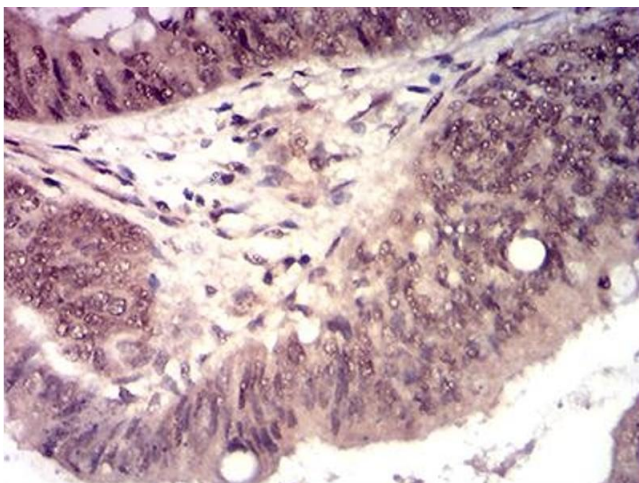
Preservative: Sodium azide

Precaution of Use: This product contains Sodium azide: a POISONOUS AND HAZARDOUS SUBSTANCE which should be handled by trained staff only.

Storage: 4 °C/-20 °C

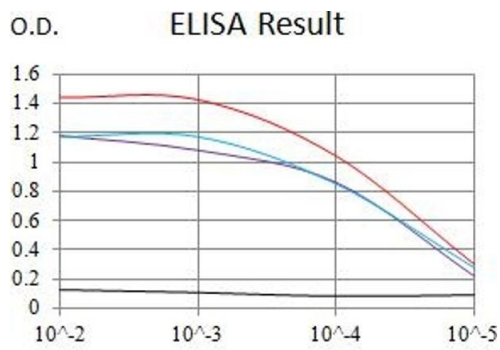
Storage Comment: 4°C, -20°C for long term storage

Images



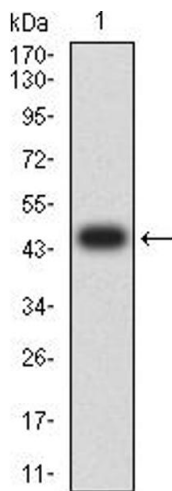
Immunohistochemistry

Image 1. Immunohistochemical analysis of paraffin-embedded esophageal cancer tissues using HTRA2 mouse mAb with DAB staining.



Serial Dilutions of Antibody

— Control Antigen = 100ng — Antigen = 10ng
 — Antigen = 50ng — Antigen = 100ng



ELISA

Image 2. Black line: Control Antigen (100 ng),Purple line: Antigen (10 ng), Blue line: Antigen (50 ng), Red line:Antigen (100 ng)

Western Blotting

Image 3. Western blot analysis using HTRA2 mAb against human HTRA2 (AA: 278-458) recombinant protein. (Expected MW is 46 kDa)

Please check the [product details page](#) for more images. Overall 7 images are available for ABIN7193389.