

Datasheet for ABIN7193390  
**anti-KAT6B antibody (AA 1186-1318)**

## 3 Images

[Go to Product page](#)

## Overview

Quantity:	0.1 mg
Target:	KAT6B
Binding Specificity:	AA 1186-1318
Reactivity:	Human
Host:	Mouse
Clonality:	Monoclonal
Application:	Western Blotting (WB), ELISA, Immunohistochemistry (IHC), Flow Cytometry (FACS), Immunocytochemistry (ICC), Neutralization (Neut)

## Product Details

Immunogen:	Purified recombinant fragment of human KAT6B (AA: 1186-1318) expressed in E. coli.
Clone:	8C8D12
Isotype:	IgG1
Purification:	purified

## Target Details

Target:	KAT6B
Alternative Name:	KAT6B ( <a href="#">KAT6B Products</a> )
Background:	Description: The protein encoded by this gene is a histone acetyltransferase and component of the MOZ/MORF protein complex. In addition to its acetyltransferase activity, the encoded protein has transcriptional activation activity in its N-terminal end and transcriptional repression

## Target Details

activity in its C-terminal end. This protein is necessary for RUNX2-dependent transcriptional activation and could be involved in brain development. Mutations have been found in patients with genitopatellar syndrome. A translocation of this gene and the CREBBP gene results in acute myeloid leukemias. Three transcript variants encoding different isoforms have been found for this gene. [provided by RefSeq, Mar 2012]

Aliases: qkf, MORF, MOZ2, GTPTS, MYST4, ZC2HC6B, querkopf

Molecular Weight: 231.4 kDa

Gene ID: 23522

## Application Details

Application Notes: ELISA: 1:10000, WB: 1:500 - 1:2000, FCM: N/A, ICC: N/A, IHC: N/A

Restrictions: For Research Use only

## Handling

Buffer: Purified antibody in PBS with 0.05 % sodium azide

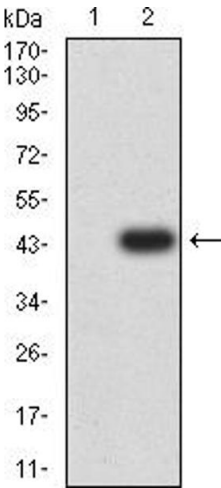
Preservative: Sodium azide

Precaution of Use: This product contains Sodium azide: a POISONOUS AND HAZARDOUS SUBSTANCE which should be handled by trained staff only.

Storage: 4 °C/-20 °C

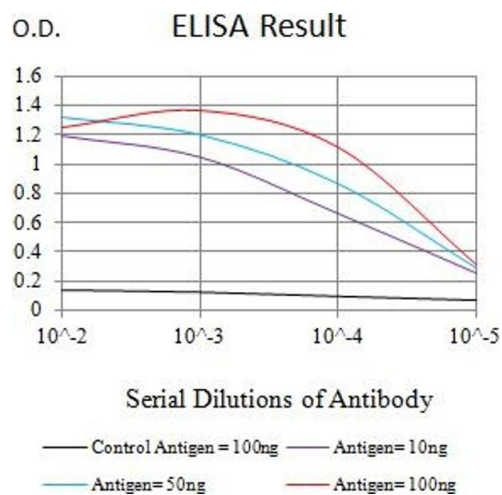
Storage Comment: 4°C, -20°C for long term storage

## Images



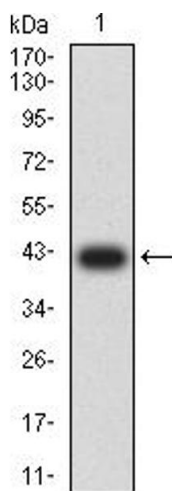
### Western Blotting

**Image 1.** Western blot analysis using KAT6B mAb against HEK293 (1) and KAT6B (AA: 1186-1318)-hlgGfc transfected HEK293 (2) cell lysate.



### ELISA

**Image 2.** Black line: Control Antigen (100 ng),Purple line: Antigen (10 ng), Blue line: Antigen (50 ng), Red line:Antigen (100 ng)



### Western Blotting

**Image 3.** Western blot analysis using KAT6B mAb against human KAT6B (AA: 1186-1318) recombinant protein. (Expected MW is 41.3 kDa)