

Datasheet for ABIN7193391
anti-Calpain 2 antibody (AA 489-700)

3 Images

[Go to Product page](#)

Overview

Quantity:	0.1 mg
Target:	Calpain 2 (CAPN2)
Binding Specificity:	AA 489-700
Reactivity:	Human
Host:	Mouse
Clonality:	Monoclonal
Application:	ELISA, Western Blotting (WB), Immunohistochemistry (IHC), Flow Cytometry (FACS), Immunocytochemistry (ICC), Neutralization (Neut)

Product Details

Immunogen:	Purified recombinant fragment of human CAPN2 (AA: 489-700) expressed in E. coli.
Clone:	2E2F2
Isotype:	IgG1
Purification:	purified

Target Details

Target:	Calpain 2 (CAPN2)
Alternative Name:	CAPN2 (CAPN2 Products)
Background:	Description: The calpains, calcium-activated neutral proteases, are nonlysosomal, intracellular cysteine proteases. The mammalian calpains include ubiquitous, stomach-specific, and muscle-specific proteins. The ubiquitous enzymes consist of heterodimers with distinct large,

Target Details

catalytic subunits associated with a common small, regulatory subunit. This gene encodes the large subunit of the ubiquitous enzyme, calpain 2. Multiple heterogeneous transcriptional start sites in the 5' UTR have been reported. Two transcript variants encoding different isoforms have been found for this gene. [provided by RefSeq, Mar 2009]

Aliases: CANP2, mCANP, CANPL2, CANPml

Molecular Weight: 80 kDa

Gene ID: 824

Application Details

Application Notes: ELISA: 1:10000, WB: 1:500 - 1:2000, FCM: N/A, ICC: N/A, IHC: N/A

Restrictions: For Research Use only

Handling

Buffer: Purified antibody in PBS with 0.05 % sodium azide

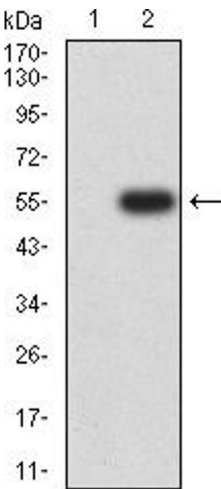
Preservative: Sodium azide

Precaution of Use: This product contains Sodium azide: a POISONOUS AND HAZARDOUS SUBSTANCE which should be handled by trained staff only.

Storage: 4 °C/-20 °C

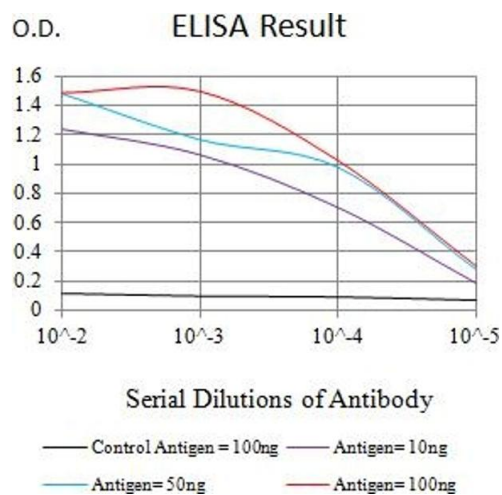
Storage Comment: 4°C, -20°C for long term storage

Images



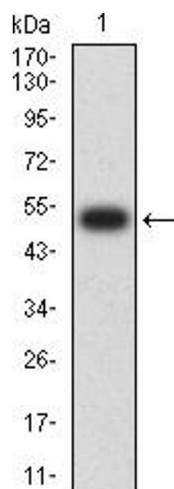
Western Blotting

Image 1. Western blot analysis using CAPN2 mAb against HEK293 (1) and CAPN2 (AA: 489-700)-hlgGFc transfected HEK293 (2) cell lysate.



ELISA

Image 2. Black line: Control Antigen (100 ng),Purple line: Antigen (10 ng), Blue line: Antigen (50 ng), Red line:Antigen (100 ng)



Western Blotting

Image 3. Western blot analysis using CAPN2 mAb against human CAPN2 (AA: 489-700) recombinant protein. (Expected MW is 50.6 kDa)