

Datasheet for ABIN7193392
anti-SETD7 antibody (AA 107-366)

5 Images

[Go to Product page](#)

Overview

Quantity:	0.1 mg
Target:	SETD7
Binding Specificity:	AA 107-366
Reactivity:	Human, Rat, Monkey
Host:	Mouse
Clonality:	Monoclonal
Conjugate:	This SETD7 antibody is un-conjugated
Application:	Western Blotting (WB), ELISA, Immunohistochemistry (IHC), Flow Cytometry (FACS), Immunocytochemistry (ICC), Neutralization (Neut)

Product Details

Immunogen:	Purified recombinant fragment of human SETD7 (AA: 107-366) expressed in E. coli.
Clone:	1B3B8
Isotype:	IgG2a
Purification:	purified

Target Details

Target:	SETD7
Alternative Name:	SETD7 (SETD7 Products)
Background:	Description: Histone methyltransferase that specifically monomethylates Lys-4 of histone H3.

Target Details

H3 Lys-4 methylation represents a specific tag for epigenetic transcriptional activation. Plays a central role in the transcriptional activation of genes such as collagenase or insulin. Recruited by IPF1/PDX-1 to the insulin promoter, leading to activate transcription. Has also methyltransferase activity toward non-histone proteins such as p53/TP53, TAF10, and possibly TAF7 by recognizing and binding the [KR]-[STA]-K in substrate proteins. Monomethylates Lys-189 of TAF10, leading to increase the affinity of TAF10 for RNA polymerase II. Monomethylates Lys-372 of p53/TP53, stabilizing p53/TP53 and increasing p53/TP53-mediated transcriptional activation.

Aliases: KMT7, SET7, SET9, SET7/9

Molecular Weight:	40.7 kDa
-------------------	----------

Gene ID:	80854
----------	-------

Application Details

Application Notes:	ELISA: 1:10000, WB: 1:500 - 1:2000, FCM: 1:200 - 1:400, ICC: N/A, IHC: N/A
--------------------	--

Restrictions:	For Research Use only
---------------	-----------------------

Handling

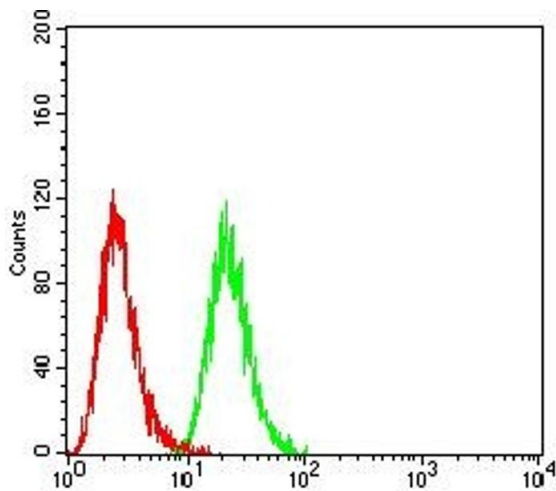
Buffer:	Purified antibody in PBS with 0.05 % sodium azide
---------	---

Preservative:	Sodium azide
---------------	--------------

Precaution of Use:	This product contains Sodium azide: a POISONOUS AND HAZARDOUS SUBSTANCE which should be handled by trained staff only.
--------------------	--

Storage:	4 °C/-20 °C
----------	-------------

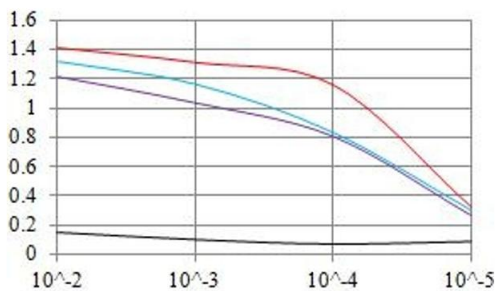
Storage Comment:	4°C, -20°C for long term storage
------------------	----------------------------------



Flow Cytometry

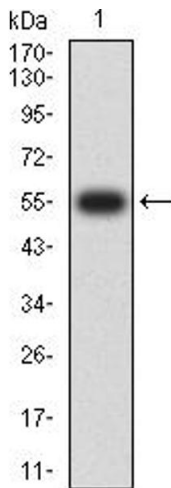
Image 1. Flow cytometric analysis of Hela cells using SETD7 mouse mAb (green) and negative control (red).

ELISA Result



Serial Dilutions of Antibody

— Control Antigen = 100ng — Antigen = 10ng
— Antigen = 50ng — Antigen = 100ng



ELISA

Image 2. Black line: Control Antigen (100 ng), Purple line: Antigen (10 ng), Blue line: Antigen (50 ng), Red line: Antigen (100 ng)

Western Blotting

Image 3. Western blot analysis using SETD7 mAb against human SETD7 (AA: 107-366) recombinant protein. (Expected MW is 55 kDa)

Please check the [product details page](#) for more images. Overall 5 images are available for ABIN7193392.