

Datasheet for ABIN7193393  
**anti-SETD7 antibody (AA 107-366)**

## 5 Images

[Go to Product page](#)

## Overview

Quantity:	0.1 mg
Target:	SETD7
Binding Specificity:	AA 107-366
Reactivity:	Human, Rat, Monkey
Host:	Mouse
Clonality:	Monoclonal
Application:	Western Blotting (WB), ELISA, Immunohistochemistry (IHC), Flow Cytometry (FACS), Immunocytochemistry (ICC), Neutralization (Neut)

## Product Details

Immunogen:	Purified recombinant fragment of human SETD7 (AA: 107-366) expressed in E. coli.
Clone:	3D6G11
Isotype:	IgG1
Purification:	purified

## Target Details

Target:	SETD7
Alternative Name:	SETD7 ( <a href="#">SETD7 Products</a> )
Background:	Description: Histone methyltransferase that specifically monomethylates Lys-4 of histone H3. H3 Lys-4 methylation represents a specific tag for epigenetic transcriptional activation. Plays a central role in the transcriptional activation of genes such as collagenase or insulin. Recruited

## Target Details

by IPF1/PDX-1 to the insulin promoter, leading to activate transcription. Has also methyltransferase activity toward non-histone proteins such as p53/TP53, TAF10, and possibly TAF7 by recognizing and binding the [KR]-[STA]-K in substrate proteins. Monomethylates Lys-189 of TAF10, leading to increase the affinity of TAF10 for RNA polymerase II. Monomethylates Lys-372 of p53/TP53, stabilizing p53/TP53 and increasing p53/TP53-mediated transcriptional activation.

Aliases: KMT7, SET7, SET9, SET7/9

Molecular Weight: 40.7 kDa

Gene ID: 80854

## Application Details

Application Notes: ELISA: 1:10000, WB: 1:500 - 1:2000, FCM: N/A, ICC: N/A, IHC: 1:200 - 1:1000

Restrictions: For Research Use only

## Handling

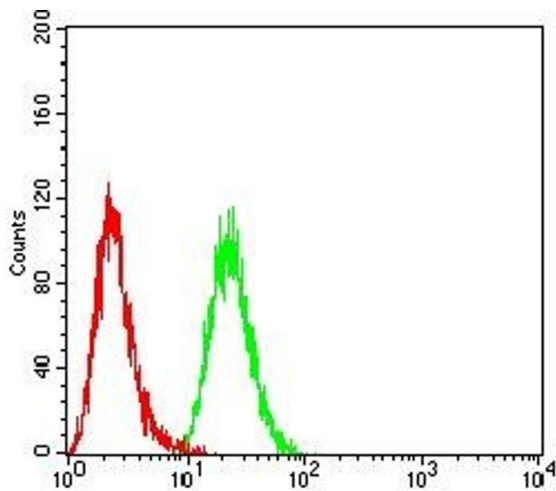
Buffer: Purified antibody in PBS with 0.05 % sodium azide

Preservative: Sodium azide

Precaution of Use: This product contains Sodium azide: a POISONOUS AND HAZARDOUS SUBSTANCE which should be handled by trained staff only.

Storage: 4 °C/-20 °C

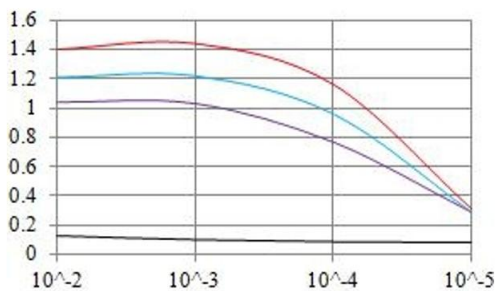
Storage Comment: 4°C, -20°C for long term storage



Immunohistochemistry

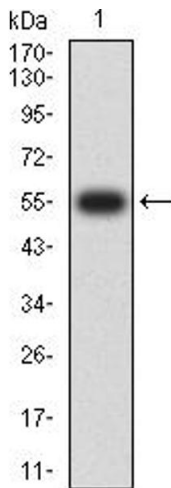
**Image 1.** Immunohistochemical analysis of paraffin-embedded Hela tissues using SETD7 mouse mAb with DAB staining.

O.D. ELISA Result



Serial Dilutions of Antibody

— Control Antigen = 100ng — Antigen = 10ng  
— Antigen = 50ng — Antigen = 100ng



ELISA

**Image 2.** Black line: Control Antigen (100 ng),Purple line: Antigen (10 ng), Blue line: Antigen (50 ng), Red line:Antigen (100 ng)

Western Blotting

**Image 3.** Western blot analysis using SETD7 mAb against human SETD7 (AA: 107-366) recombinant protein. (Expected MW is 55 kDa)

Please check the [product details page](#) for more images. Overall 5 images are available for ABIN7193393.