



[Go to Product page](#)

Datasheet for ABIN7193402
anti-RBBP7 antibody (AA 1-200)

9 Images

Overview

Quantity:	0.1 mg
Target:	RBBP7
Binding Specificity:	AA 1-200
Reactivity:	Human, Mouse, Rat
Host:	Mouse
Clonality:	Monoclonal
Application:	Western Blotting (WB), ELISA, Immunohistochemistry (IHC), Flow Cytometry (FACS), Immunocytochemistry (ICC)

Product Details

Immunogen:	Purified recombinant fragment of human RBBP7 (AA: 1-200) expressed in E. coli.
Clone:	2A10C2
Isotype:	IgG1
Purification:	purified

Target Details

Target:	RBBP7
Alternative Name:	RBBP7 (RBBP7 Products)
Background:	Description: This protein is a ubiquitously expressed nuclear protein and belongs to a highly conserved subfamily of WD-repeat proteins. It is found among several proteins that binds directly to retinoblastoma protein, which regulates cell proliferation. The encoded protein is

Target Details

found in many histone deacetylase complexes, including mSin3 co-repressor complex. It is also present in protein complexes involved in chromatin assembly. This protein can interact with BRCA1 tumor-suppressor gene and may have a role in the regulation of cell proliferation and differentiation. Two transcript variants encoding different isoforms have been found for this gene. [provided by RefSeq, Nov 2010]

Aliases: RbAp46

Molecular Weight: 47.8 kDa

Gene ID: 5931

Application Details

Application Notes: WB:1:500 - 1:2000, IHC:1:200 - 1:1000, ICC:1:200 - 1:1000, FCM:1:200 - 1:400, ELISA:1:10000,

Restrictions: For Research Use only

Handling

Buffer: Purified antibody in PBS with 0.05 % sodium azide

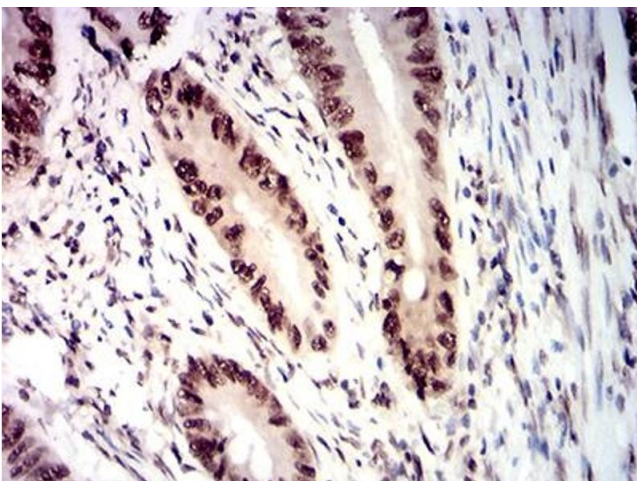
Preservative: Sodium azide

Precaution of Use: This product contains Sodium azide: a POISONOUS AND HAZARDOUS SUBSTANCE which should be handled by trained staff only.

Storage: 4 °C/-20 °C

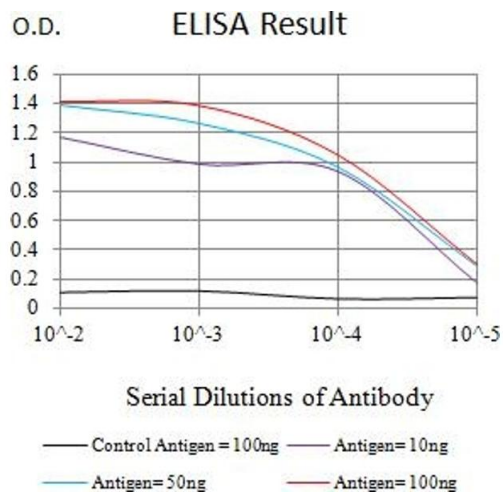
Storage Comment: 4°C, -20°C for long term storage

Images



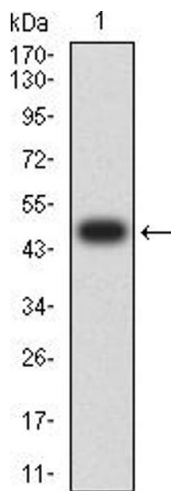
Immunohistochemistry

Image 1. Immunohistochemical analysis of paraffin-embedded rectum cancer tissues using RBBP7 mouse mAb with DAB staining.



ELISA

Image 2. Black line: Control Antigen (100 ng), Purple line: Antigen (10 ng), Blue line: Antigen (50 ng), Red line: Antigen (100 ng)



Western Blotting

Image 3. Western blot analysis using RBBP7 mAb against human RBBP7 (AA: 1-200) recombinant protein. (Expected MW is 48.6 kDa)

Please check the [product details page](#) for more images. Overall 9 images are available for ABIN7193402.