

Datasheet for ABIN7193404
anti-LILRB1 antibody (AA 338-461)

4 Images

[Go to Product page](#)

Overview

Quantity:	0.1 mg
Target:	LILRB1
Binding Specificity:	AA 338-461
Reactivity:	Human
Host:	Mouse
Clonality:	Monoclonal
Application:	Western Blotting (WB), ELISA, Flow Cytometry (FACS)

Product Details

Immunogen:	Purified recombinant fragment of human LILRB1 (AA: extra 338-461) expressed in E. coli.
Clone:	4B5A4
Isotype:	IgG1
Purification:	purified

Target Details

Target:	LILRB1
Alternative Name:	LILRB1 (LILRB1 Products)
Background:	Description: This gene is a member of the leukocyte immunoglobulin-like receptor (LIR) family, which is found in a gene cluster at chromosomal region 19q13.4. The encoded protein belongs to the subfamily B class of LIR receptors which contain two or four extracellular immunoglobulin domains, a transmembrane domain, and two to four cytoplasmic

Target Details

immunoreceptor tyrosine-based inhibitory motifs (ITIMs). The receptor is expressed on immune cells where it binds to MHC class I molecules on antigen-presenting cells and transduces a negative signal that inhibits stimulation of an immune response. It is thought to control inflammatory responses and cytotoxicity to help focus the immune response and limit autoreactivity. Multiple transcript variants encoding different isoforms have been found for this gene. [provided by RefSeq, Jul 2008]

Aliases: ILT2, LIR1, MIR7, PIRB, CD85J, ILT-2, LIR-1, MIR-7, PIR-B

Molecular Weight: 70.8 kDa

Gene ID: 10859

Pathways: [Cellular Response to Molecule of Bacterial Origin](#), [Regulation of Leukocyte Mediated Immunity](#), [Positive Regulation of Immune Effector Process](#), [Production of Molecular Mediator of Immune Response](#)

Application Details

Application Notes: WB:1:500 - 1:2000, FCM:1:200 - 1:400, ELISA:1:10000,

Restrictions: For Research Use only

Handling

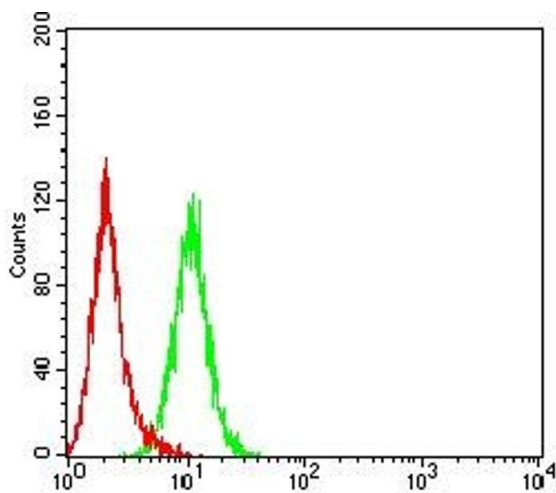
Buffer: Purified antibody in PBS with 0.05 % sodium azide

Preservative: Sodium azide

Precaution of Use: This product contains Sodium azide: a POISONOUS AND HAZARDOUS SUBSTANCE which should be handled by trained staff only.

Storage: 4 °C/-20 °C

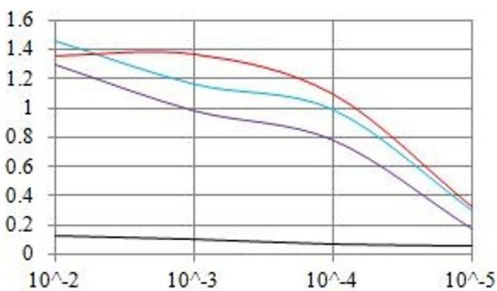
Storage Comment: 4°C, -20°C for long term storage



Flow Cytometry

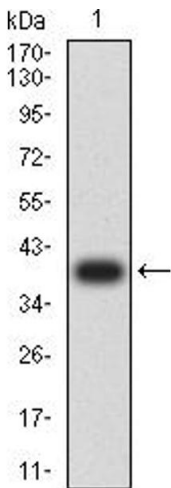
Image 1. Flow cytometric analysis of Hela cells using LILRB1 mouse mAb (green) and negative control (red).

O.D. ELISA Result



Serial Dilutions of Antibody

— Control Antigen = 100ng — Antigen = 10ng
— Antigen = 50ng — Antigen = 100ng



ELISA

Image 2. Black line: Control Antigen (100 ng),Purple line: Antigen (10 ng), Blue line: Antigen (50 ng), Red line:Antigen (100 ng)

Western Blotting

Image 3. Western blot analysis using LILRB1 mAb against human LILRB1 (AA: extra 338-461) recombinant protein. (Expected MW is 39 kDa)

Please check the [product details page](#) for more images. Overall 4 images are available for ABIN7193404.