

Datasheet for ABIN7193407
anti-KDM2A antibody (AA 1-150)[Go to Product page](#)

3 Images

Overview

Quantity:	0.1 mg
Target:	KDM2A
Binding Specificity:	AA 1-150
Reactivity:	Human
Host:	Mouse
Clonality:	Monoclonal
Application:	Western Blotting (WB), ELISA

Product Details

Immunogen:	Purified recombinant fragment of human KDM2A (AA: 1-150) expressed in E. coli.
Clone:	5C11F7
Isotype:	IgG1
Purification:	purified

Target Details

Target:	KDM2A
Alternative Name:	KDM2A (KDM2A Products)
Background:	Description: This gene encodes a member of the F-box protein family which is characterized by an approximately 40 amino acid motif, the F-box. The F-box proteins constitute one of the four subunits of ubiquitin protein ligase complex called SCFs (SKP1-cullin-F-box), which function in phosphorylation-dependent ubiquitination. The F-box proteins are divided into 3 classes: Fbws

Target Details

containing WD-40 domains, Fbls containing leucine-rich repeats, and Fbxs containing either different protein-protein interaction modules or no recognizable motifs. The protein encoded by this gene belongs to the Fbls class and, in addition to an F-box, contains at least six highly degenerated leucine-rich repeats. This family member plays a role in epigenetic silencing. It nucleates at CpG islands and specifically demethylates both mono- and di-methylated lysine-36 of histone H3. Alternative splicing results in multiple transcript variants. [provided by RefSeq, Jan 2012]

Aliases: FBL7, CXXC8, FBL11, FBXL11, JHDM1A, LILINA

Molecular Weight: 132.8 kDa

Gene ID: 22992

Pathways: [Warburg Effect](#)

Application Details

Application Notes: WB:1:500 - 1:2000, ELISA:1:10000,

Restrictions: For Research Use only

Handling

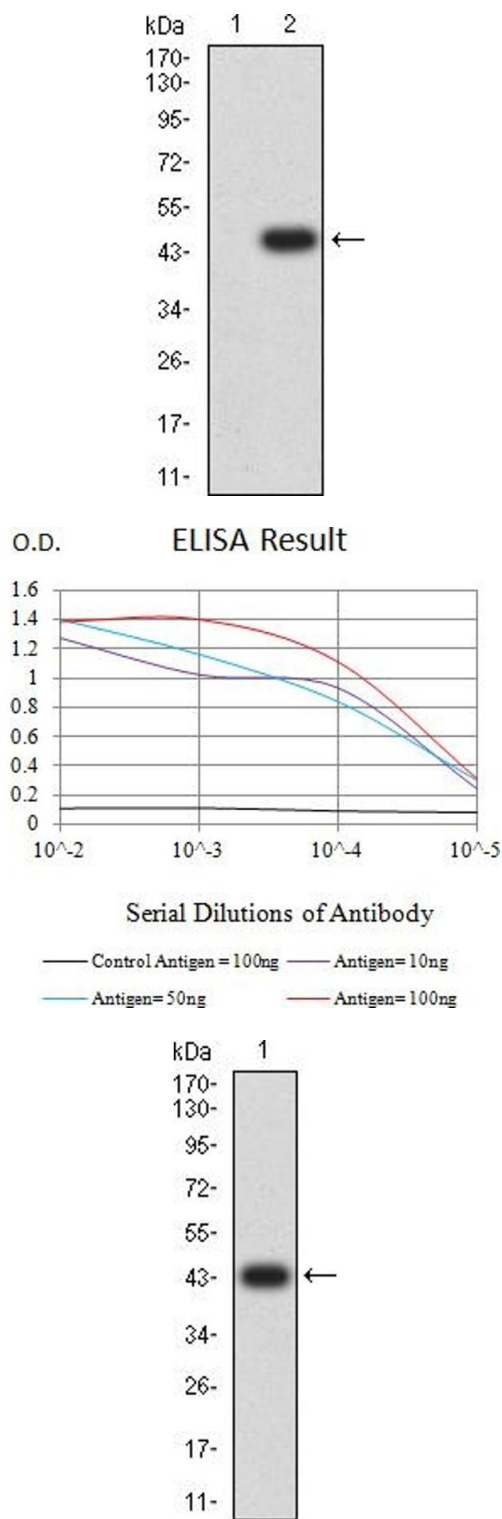
Buffer: Purified antibody in PBS with 0.05 % sodium azide

Preservative: Sodium azide

Precaution of Use: This product contains Sodium azide: a POISONOUS AND HAZARDOUS SUBSTANCE which should be handled by trained staff only.

Storage: 4 °C/-20 °C

Storage Comment: 4°C, -20°C for long term storage



Western Blotting

Image 1. Western blot analysis using KDM2A mAb against HEK293 (1) and KDM2A (AA: 1-150)-hlgGFc transfected HEK293 (2) cell lysate.

ELISA

Image 2. Black line: Control Antigen (100 ng),Purple line: Antigen (10 ng), Blue line: Antigen (50 ng), Red line:Antigen (100 ng)

Western Blotting

Image 3. Western blot analysis using KDM2A mAb against human KDM2A (AA: 1-150) recombinant protein. (Expected MW is 43.8 kDa)