

Datasheet for ABIN7193414  
**anti-SETD8 antibody (AA 109-272)**



[Go to Product page](#)

5 Images

## Overview

Quantity:	100 µL
Target:	SETD8
Binding Specificity:	AA 109-272
Reactivity:	Human
Host:	Mouse
Clonality:	Monoclonal
Conjugate:	This SETD8 antibody is un-conjugated
Application:	ELISA, Immunohistochemistry (IHC), Flow Cytometry (FACS)

## Product Details

Purpose:	KMT5A Antibody
Immunogen:	Purified recombinant fragment of human KMT5A (AA: 109-272) expressed in E. Coli.
Clone:	5E10F7
Isotype:	IgG1
Purification:	Purified antibody

## Target Details

Target:	SETD8
Alternative Name:	KMT5A ( <a href="#">SETD8 Products</a> )
Background:	Description:

## Target Details

---

The protein encoded by this gene is a protein-lysine N-methyltransferase that can monomethylate Lys-20 of histone H4 to effect transcriptional repression of some genes. The encoded protein is required for cell proliferation and plays a role in chromatin condensation.

[provided by RefSeq, May 2016]

Aliases: SET8, SET07, SETD8, PR-Set7, PR/SET07

---

Molecular Weight: 42.9kDa

---

Gene ID: 387893

---

UniProt: [Q9NQR1](#)

## Application Details

---

Application Notes: ELISA: 1/10000  
FCM: 1/200 - 1/400

---

Restrictions: For Research Use only

## Handling

---

Format: Liquid

---

Buffer: Purified antibody in PBS with 0.05 % sodium azide.

---

Preservative: Sodium azide

---

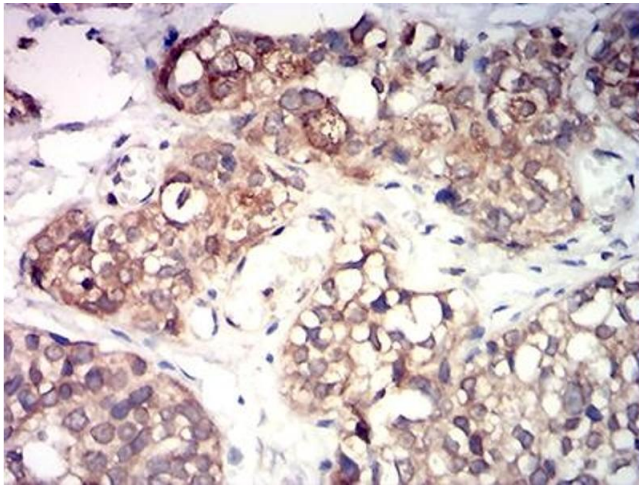
Precaution of Use: This product contains Sodium azide: a POISONOUS AND HAZARDOUS SUBSTANCE which should be handled by trained staff only.

---

Storage: 4 °C,-20 °C

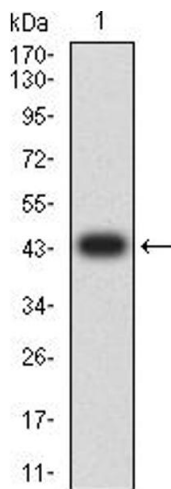
---

Storage Comment: Store at 4°C short term. Aliquot and store at -20°C long term. Avoid freeze/thaw cycles.



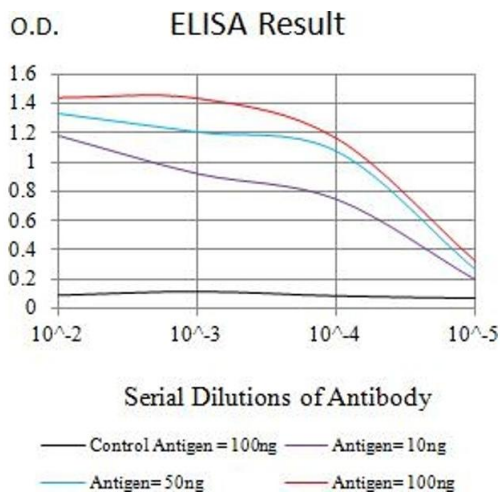
### Immunohistochemistry

**Image 1.** Immunohistochemical analysis of paraffin-embedded bladder cancer tissues using KMT5A mouse mAb with DAB staining.



### Western Blotting

**Image 2.** Western blot analysis using KMT5A mAb against human KMT5A (AA: 109-272) recombinant protein. (Expected MW is 44.3 kDa)



### ELISA

**Image 3.** Black line: Control Antigen (100 ng), Purple line: Antigen (10 ng), Blue line: Antigen (50 ng), Red line: Antigen (100 ng)

Please check the [product details page](#) for more images. Overall 5 images are available for ABIN7193414.