

Datasheet for ABIN7193415
anti-PRNP antibody (AA 23-230)[Go to Product page](#)

4 Images

Overview

Quantity:	0.1 mg
Target:	PRNP
Binding Specificity:	AA 23-230
Reactivity:	Human
Host:	Mouse
Clonality:	Monoclonal
Application:	Western Blotting (WB), ELISA, Flow Cytometry (FACS)

Product Details

Immunogen:	Purified recombinant fragment of human CD230 (AA: 23-230) expressed in E. coli.
Clone:	3G10G9
Isotype:	IgG1
Purification:	purified

Target Details

Target:	PRNP
Alternative Name:	CD230 (PRNP Products)
Background:	Description: The protein encoded by this gene is a membrane glycosylphosphatidylinositol-anchored glycoprotein that tends to aggregate into rod-like structures. The encoded protein contains a highly unstable region of five tandem octapeptide repeats. This gene is found on chromosome 20, approximately 20 kbp upstream of a gene which encodes a biochemically and

Target Details

structurally similar protein to the one encoded by this gene. Mutations in the repeat region as well as elsewhere in this gene have been associated with Creutzfeldt-Jakob disease, fatal familial insomnia, Gerstmann-Straussler disease, Huntington disease-like 1, and kuru. An overlapping open reading frame has been found for this gene that encodes a smaller, structurally unrelated protein, AltPrp. Alternative splicing results in multiple transcript variants. [provided by RefSeq, Nov 2014]

Aliases: PRNP, CJD, GSS, PrP, ASCR, KURU, PRIP, PrPc, AltPrP, p27-30, PrP27-30, PrP33-35C

Molecular Weight: 27.7 kDa

Gene ID: 5621

Pathways: [Transition Metal Ion Homeostasis, Activated T Cell Proliferation](#)

Application Details

Application Notes: WB:1:500 - 1:2000, FCM:1:200 - 1:400, ELISA:1:10000,

Restrictions: For Research Use only

Handling

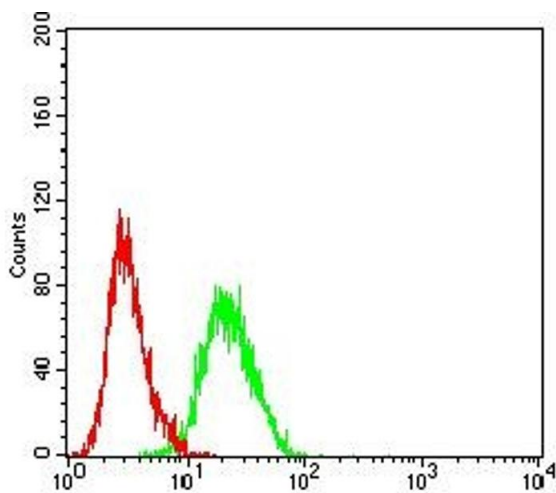
Buffer: Purified antibody in PBS with 0.05 % sodium azide

Preservative: Sodium azide

Precaution of Use: This product contains Sodium azide: a POISONOUS AND HAZARDOUS SUBSTANCE which should be handled by trained staff only.

Storage: 4 °C/-20 °C

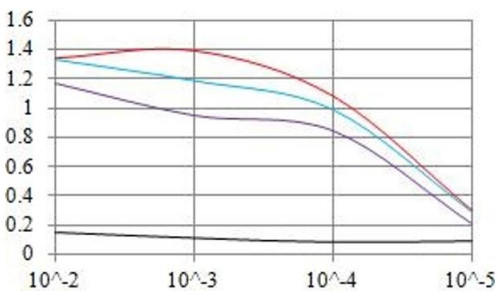
Storage Comment: 4°C, -20°C for long term storage



Flow Cytometry

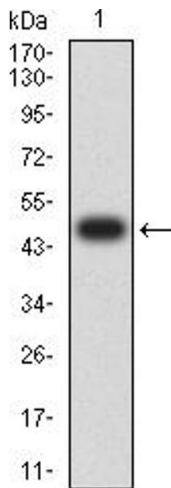
Image 1. Flow cytometric analysis of HL-60 cells using CD230 mouse mAb (green) and negative control (red).

ELISA Result



Serial Dilutions of Antibody

— Control Antigen = 100ng — Antigen = 10ng
— Antigen = 50ng — Antigen = 100ng



ELISA

Image 2. Black line: Control Antigen (100 ng), Purple line: Antigen (10 ng), Blue line: Antigen (50 ng), Red line: Antigen (100 ng)

Western Blotting

Image 3. Western blot analysis using CD230 mAb against human CD230 (AA: 23-230) recombinant protein. (Expected MW is 48.7 kDa)

Please check the [product details page](#) for more images. Overall 4 images are available for ABIN7193415.