



[Go to Product page](#)

Datasheet for ABIN7193420  
**anti-HLA-B antibody (AA 209-295)**

3 Images

### Overview

Quantity:	0.1 mg
Target:	HLA-B
Binding Specificity:	AA 209-295
Reactivity:	Human
Host:	Mouse
Clonality:	Monoclonal
Application:	Western Blotting (WB), ELISA

### Product Details

Immunogen:	Purified recombinant fragment of human HLA-B (AA: 209-295) expressed in E. coli.
Clone:	4D4B6
Isotype:	IgG1
Purification:	purified

### Target Details

Target:	HLA-B
Alternative Name:	HLA-B ( <a href="#">HLA-B Products</a> )

**Background:** Description: HLA-B belongs to the HLA class I heavy chain paralogues. This class I molecule is a heterodimer consisting of a heavy chain and a light chain (beta-2 microglobulin). The heavy chain is anchored in the membrane. Class I molecules play a central role in the immune system by presenting peptides derived from the endoplasmic reticulum lumen. They are expressed in

## Target Details

---

nearly all cells. The heavy chain is approximately 45 kDa and its gene contains 8 exons. Exon 1 encodes the leader peptide, exon 2 and 3 encode the alpha1 and alpha2 domains, which both bind the peptide, exon 4 encodes the alpha3 domain, exon 5 encodes the transmembrane region and exons 6 and 7 encode the cytoplasmic tail. Polymorphisms within exon 2 and exon 3 are responsible for the peptide binding specificity of each class one molecule. Typing for these polymorphisms is routinely done for bone marrow and kidney transplantation. Hundreds of HLA-B alleles have been described. [provided by RefSeq, Jul 2008]

Aliases: AS, HLAB, B-4901

---

Molecular Weight: 40.4 kDa

---

Gene ID: 3106

---

Pathways: [Regulation of Leukocyte Mediated Immunity](#), [Positive Regulation of Immune Effector Process](#), [Cancer Immune Checkpoints](#), [Human Leukocyte Antigen \(HLA\) in Adaptive Immune Response](#)

## Application Details

---

Application Notes: WB:1:500 - 1:2000, ELISA:1:10000,

---

Restrictions: For Research Use only

## Handling

---

Buffer: Purified antibody in PBS with 0.05 % sodium azide

---

Preservative: Sodium azide

---

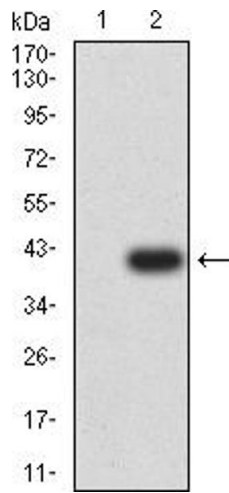
Precaution of Use: This product contains Sodium azide: a POISONOUS AND HAZARDOUS SUBSTANCE which should be handled by trained staff only.

---

Storage: 4 °C/-20 °C

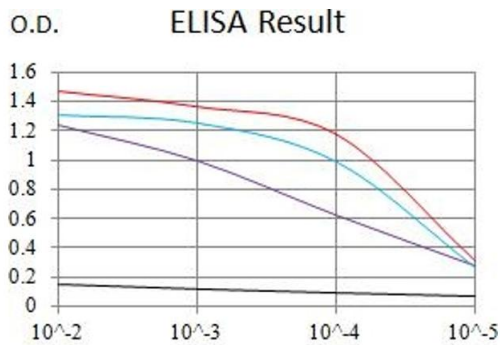
---

Storage Comment: 4°C, -20°C for long term storage



### Western Blotting

**Image 1.** Western blot analysis using HLA-B mAb against HEK293 (1) and HLA-B (AA: 209-295)-hlgGFc transfected HEK293 (2) cell lysate.

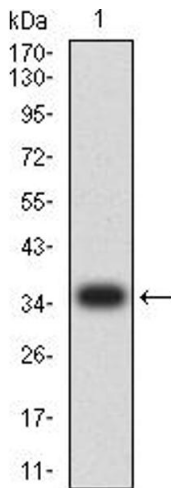


### ELISA

**Image 2.** Black line: Control Antigen (100 ng), Purple line: Antigen (10 ng), Blue line: Antigen (50 ng), Red line: Antigen (100 ng)

### Serial Dilutions of Antibody

— Control Antigen = 100ng — Antigen = 10ng  
 — Antigen = 50ng — Antigen = 100ng



### Western Blotting

**Image 3.** Western blot analysis using HLA-B mAb against human HLA-B (AA: 209-295) recombinant protein. (Expected MW is 35.9 kDa)