



[Go to Product page](#)

Datasheet for ABIN7193421  
**anti-PTGFRN antibody (AA 46-221)**

5 Images

Overview

Quantity:	0.1 mg
Target:	PTGFRN
Binding Specificity:	AA 46-221
Reactivity:	Human
Host:	Mouse
Clonality:	Monoclonal
Application:	Western Blotting (WB), ELISA, Immunohistochemistry (IHC), Flow Cytometry (FACS)

Product Details

Immunogen:	Purified recombinant fragment of human CD315 (AA: extra 46-221) expressed in E. coli.
Clone:	4E9G7
Isotype:	IgG2b
Purification:	purified

Target Details

Target:	PTGFRN
Alternative Name:	CD315 ( <a href="#">PTGFRN Products</a> )
Background:	Description: Inhibits the binding of prostaglandin F2-alpha (PGF2-alpha) to its specific FP receptor, by decreasing the receptor number rather than the affinity constant. Functional coupling with the prostaglandin F2-alpha receptor seems to occur (By similarity). Aliases: PTGFRN, FPRP, EWI-F, CD9P-1, SMAP-6

## Target Details

Molecular Weight: 98.6 kDa

Gene ID: 5738

## Application Details

Application Notes: WB:1:500 - 1:2000, IHC:1:200 - 1:1000, FCM:1:200 - 1:400, ELISA:1:10000,

Restrictions: For Research Use only

## Handling

Buffer: Purified antibody in PBS with 0.05 % sodium azide

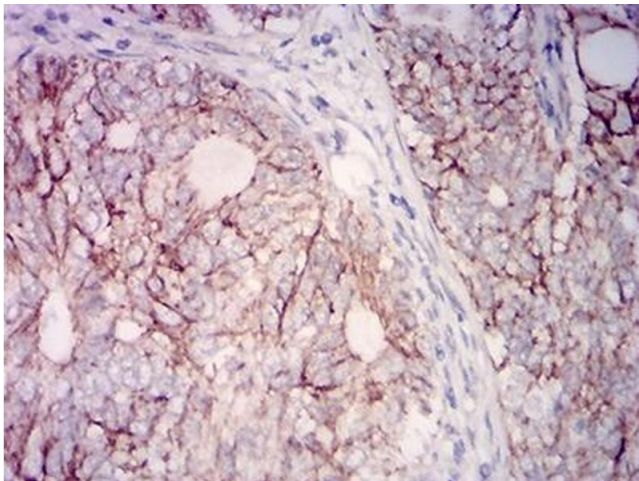
Preservative: Sodium azide

Precaution of Use: This product contains Sodium azide: a POISONOUS AND HAZARDOUS SUBSTANCE which should be handled by trained staff only.

Storage: 4 °C/-20 °C

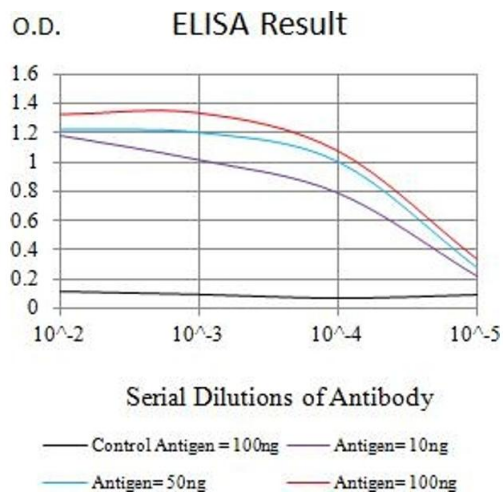
Storage Comment: 4°C, -20°C for long term storage

## Images



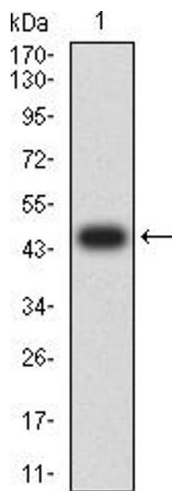
### Immunohistochemistry

**Image 1.** Immunohistochemical analysis of paraffin-embedded cervical cancer tissues using CD315 mouse mAb with DAB staining.



**ELISA**

**Image 2.** Black line: Control Antigen (100 ng),Purple line: Antigen (10 ng), Blue line: Antigen (50 ng), Red line:Antigen (100 ng)



**Western Blotting**

**Image 3.** Western blot analysis using CD315 mAb against human CD315 (AA: extra 46-221) recombinant protein. (Expected MW is 45.5 kDa)

Please check the [product details page](#) for more images. Overall 5 images are available for ABIN7193421.