

Datasheet for ABIN7193423
anti-GGT1 antibody (AA 381-470)

3 Images

[Go to Product page](#)

Overview

Quantity:	0.1 mg
Target:	GGT1
Binding Specificity:	AA 381-470
Reactivity:	Human
Host:	Mouse
Clonality:	Monoclonal
Application:	Western Blotting (WB), ELISA

Product Details

Immunogen:	Purified recombinant fragment of human CD224 (AA: extra 381-470) expressed in E. coli.
Clone:	1F1B5
Isotype:	IgG2a
Purification:	purified

Target Details

Target:	GGT1
Alternative Name:	CD224 (GGT1 Products)
Background:	Description: The enzyme encoded by this gene is a type I gamma-glutamyltransferase that catalyzes the transfer of the glutamyl moiety of glutathione to a variety of amino acids and dipeptide acceptors. The enzyme is composed of a heavy chain and a light chain, which are derived from a single precursor protein. It is expressed in tissues involved in absorption and

Target Details

secretion and may contribute to the etiology of diabetes and other metabolic disorders. Multiple alternatively spliced variants have been identified. There are a number of related genes present on chromosomes 20 and 22, and putative pseudogenes for this gene on chromosomes 2, 13, and 22. [provided by RefSeq, Jan 2014]

Aliases: GGT1, GGT, GTG, GGTD, GGT 1, D22S672, D22S732

Molecular Weight: 61.4 kDa

Gene ID: 2678

Application Details

Application Notes: WB:1:500 - 1:2000, ELISA:1:10000,

Restrictions: For Research Use only

Handling

Buffer: Purified antibody in PBS with 0.05 % sodium azide

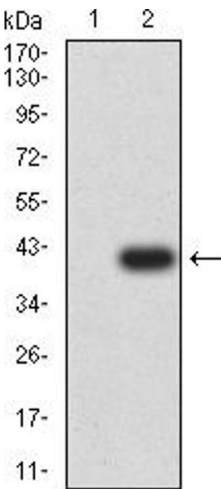
Preservative: Sodium azide

Precaution of Use: This product contains Sodium azide: a POISONOUS AND HAZARDOUS SUBSTANCE which should be handled by trained staff only.

Storage: 4 °C/-20 °C

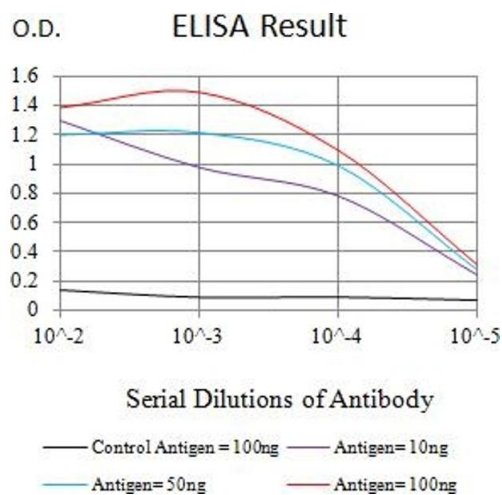
Storage Comment: 4°C, -20°C for long term storage

Images



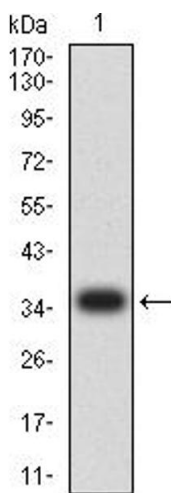
Western Blotting

Image 1. Western blot analysis using CD224 mAb against HEK293 (1) and CD224 (AA: extra 381-470)-hlgGfc transfected HEK293 (2) cell lysate.



ELISA

Image 2. Black line: Control Antigen (100 ng),Purple line: Antigen (10 ng), Blue line: Antigen (50 ng), Red line:Antigen (100 ng)



Western Blotting

Image 3. Western blot analysis using CD224 mAb against human CD224 (AA: extra 381-470) recombinant protein. (Expected MW is 35.6 kDa)