

Datasheet for ABIN7193425
anti-MAP1LC3A antibody (AA 1-121)[Go to Product page](#)

4 Images

Overview

Quantity:	0.1 mg
Target:	MAP1LC3A
Binding Specificity:	AA 1-121
Reactivity:	Human
Host:	Mouse
Clonality:	Monoclonal
Application:	Western Blotting (WB), ELISA, Flow Cytometry (FACS)

Product Details

Immunogen:	Purified recombinant fragment of human MAP1LC3A (AA: 1-121) expressed in E. coli.
Clone:	7E9E12
Isotype:	IgG2a
Purification:	purified

Target Details

Target:	MAP1LC3A
Alternative Name:	MAP1LC3A (MAP1LC3A Products)
Background:	Description: MAP1A and MAP1B are microtubule-associated proteins which mediate the physical interactions between microtubules and components of the cytoskeleton. MAP1A and MAP1B each consist of a heavy chain subunit and multiple light chain subunits. The protein encoded by this gene is one of the light chain subunits and can associate with either MAP1A or

Target Details

MAP1B. Two transcript variants encoding different isoforms have been found for this gene. The expression of variant 1 is suppressed in many tumor cell lines, suggesting that may be involved in carcinogenesis. [provided by RefSeq, Feb 2012]

Aliases: LC3, LC3A, ATG8E, MAP1ALC3, MAP1BLC3

Molecular Weight: 14.3 kDa

Gene ID: 84557

Pathways: [Autophagy](#)

Application Details

Application Notes: WB:1:500 - 1:2000, FCM:1:200 - 1:400, ELISA:1:10000,

Restrictions: For Research Use only

Handling

Buffer: Purified antibody in PBS with 0.05 % sodium azide

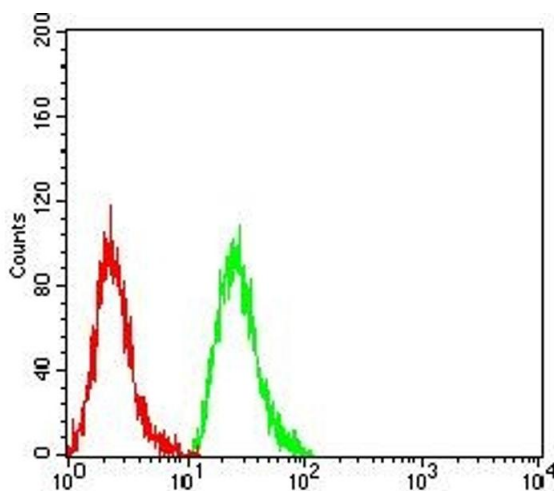
Preservative: Sodium azide

Precaution of Use: This product contains Sodium azide: a POISONOUS AND HAZARDOUS SUBSTANCE which should be handled by trained staff only.

Storage: 4 °C/-20 °C

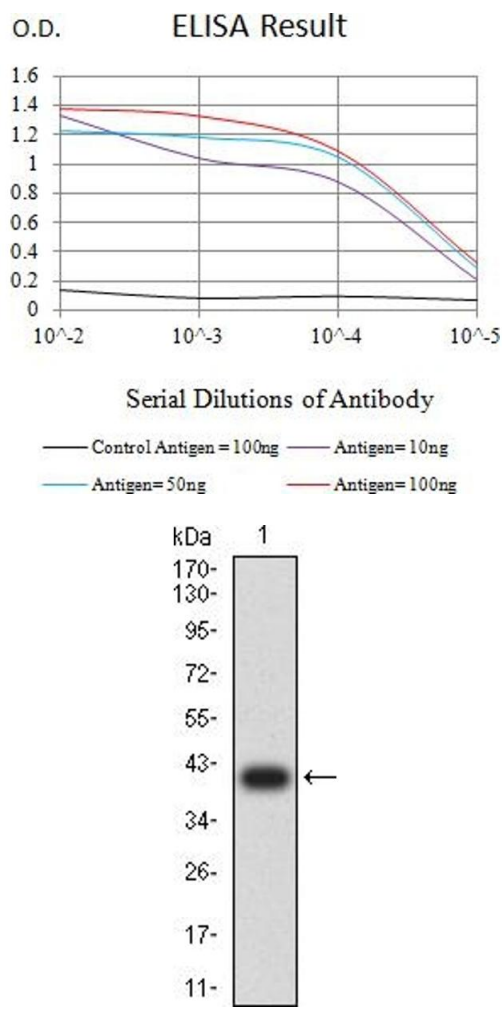
Storage Comment: 4°C, -20°C for long term storage

Images



Flow Cytometry

Image 1. Flow cytometric analysis of Hela cells using MAP1LC3A mouse mAb (green) and negative control (red).



ELISA

Image 2. Black line: Control Antigen (100 ng),Purple line: Antigen (10 ng), Blue line: Antigen (50 ng), Red line:Antigen (100 ng)

Western Blotting

Image 3. Western blot analysis using MAP1LC3A mAb against human MAP1LC3A (AA: 1-121) recombinant protein. (Expected MW is 39.7 kDa)

Please check the [product details page](#) for more images. Overall 4 images are available for ABIN7193425.