

Datasheet for ABIN7193437  
**anti-Lysine (K)-Specific Methyltransferase 2B (KMT2B) (AA 445-599) antibody**

[Go to Product page](#)

#### 4 Images

### Overview

Quantity:	0.1 mg
Target:	Lysine (K)-Specific Methyltransferase 2B (KMT2B)
Binding Specificity:	AA 445-599
Reactivity:	Human
Host:	Mouse
Clonality:	Monoclonal
Conjugate:	Un-conjugated
Application:	ELISA, Western Blotting (WB), Flow Cytometry (FACS)

### Product Details

Immunogen:	Purified recombinant fragment of human KMT2D (AA: 445-599) expressed in E. coli.
Clone:	3C8E11
Isotype:	IgG1
Purification:	purified

### Target Details

Target:	Lysine (K)-Specific Methyltransferase 2B (KMT2B)
Alternative Name:	KMT2D ( <a href="#">KMT2B Products</a> )
Background:	Description: The protein encoded by this gene is a histone methyltransferase that methylates the Lys-4 position of histone H3. The encoded protein is part of a large protein complex called

## Target Details

ASCOM, which has been shown to be a transcriptional regulator of the beta-globin and estrogen receptor genes. Mutations in this gene have been shown to be a cause of Kabuki syndrome.

Aliases: ALR, KMS, MLL2, MLL4, AAD10, KABUK1, TNRC21, CAGL114

Molecular Weight: 593 kDa

Gene ID: 8085

Pathways: [Warburg Effect](#)

## Application Details

Application Notes: WB:1:500 - 1:2000, FCM:1:200 - 1:400, ELISA:1:10000,

Restrictions: For Research Use only

## Handling

Buffer: Purified antibody in PBS with 0.05 % sodium azide

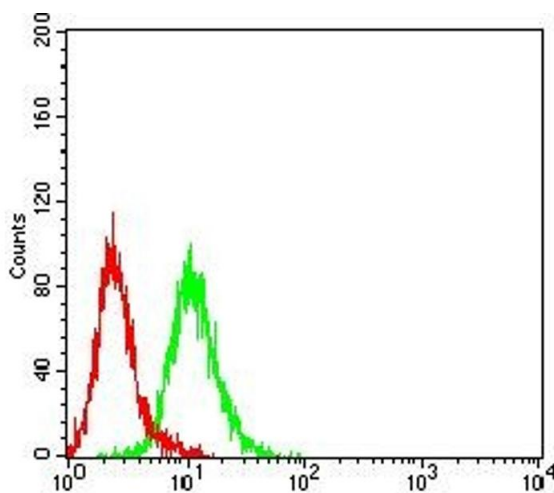
Preservative: Sodium azide

Precaution of Use: This product contains Sodium azide: a POISONOUS AND HAZARDOUS SUBSTANCE which should be handled by trained staff only.

Storage: 4 °C/-20 °C

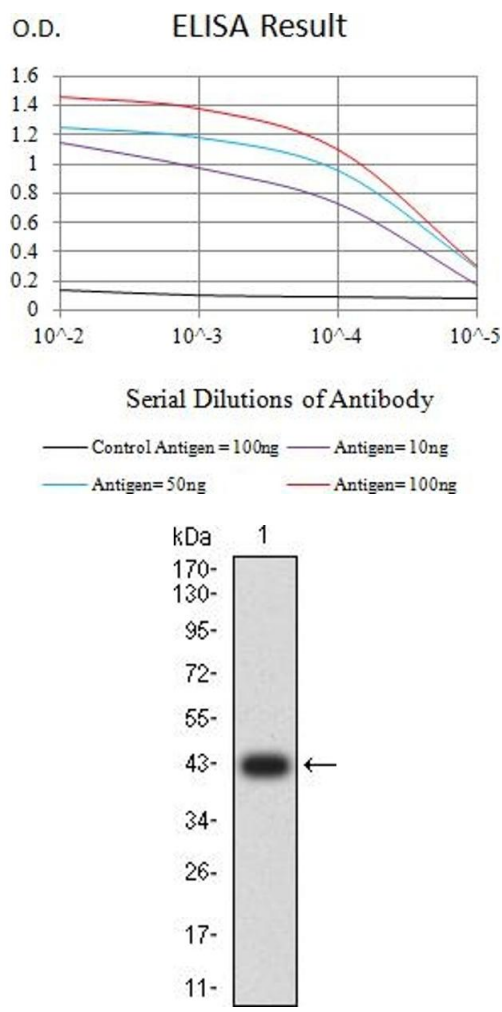
Storage Comment: 4°C, -20°C for long term storage

## Images



### Flow Cytometry

**Image 1.** Flow cytometric analysis of Hela cells using KMT2D mouse mAb (green) and negative control (red).



### ELISA

**Image 2.** Black line: Control Antigen (100 ng),Purple line: Antigen (10 ng), Blue line: Antigen (50 ng), Red line:Antigen (100 ng)

### Western Blotting

**Image 3.** Western blot analysis using KMT2D mAb against human KMT2D (AA: 445-599) recombinant protein. (Expected MW is 42.2 kDa)

Please check the [product details page](#) for more images. Overall 4 images are available for ABIN7193437.