

Datasheet for ABIN7193438

anti-Lysine (K)-Specific Methyltransferase 2B (KMT2B) (AA 445-599) antibody[Go to Product page](#)

6 Images

Overview

Quantity:	0.1 mg
Target:	Lysine (K)-Specific Methyltransferase 2B (KMT2B)
Binding Specificity:	AA 445-599
Reactivity:	Human
Host:	Mouse
Clonality:	Monoclonal
Conjugate:	Un-conjugated
Application:	ELISA, Immunohistochemistry (IHC), Western Blotting (WB), Flow Cytometry (FACS)

Product Details

Immunogen:	Purified recombinant fragment of human KMT2D (AA: 445-599) expressed in E. coli.
Clone:	1D10F6
Isotype:	IgG2b
Purification:	purified

Target Details

Target:	Lysine (K)-Specific Methyltransferase 2B (KMT2B)
Alternative Name:	KMT2D (KMT2B Products)
Background:	Description: The protein encoded by this gene is a histone methyltransferase that methylates the Lys-4 position of histone H3. The encoded protein is part of a large protein complex called

Target Details

ASCOM, which has been shown to be a transcriptional regulator of the beta-globin and estrogen receptor genes. Mutations in this gene have been shown to be a cause of Kabuki syndrome.
Aliases: ALR, KMS, MLL2, MLL4, AAD10, KABUK1, TNRC21, CAGL114

Molecular Weight: 593 kDa

Gene ID: 8085

Pathways: [Warburg Effect](#)

Application Details

Application Notes: WB:1:500 - 1:2000, IHC:1:200 - 1:1000, FCM:1:200 - 1:400, ELISA:1:10000,

Restrictions: For Research Use only

Handling

Buffer: Purified antibody in PBS with 0.05 % sodium azide

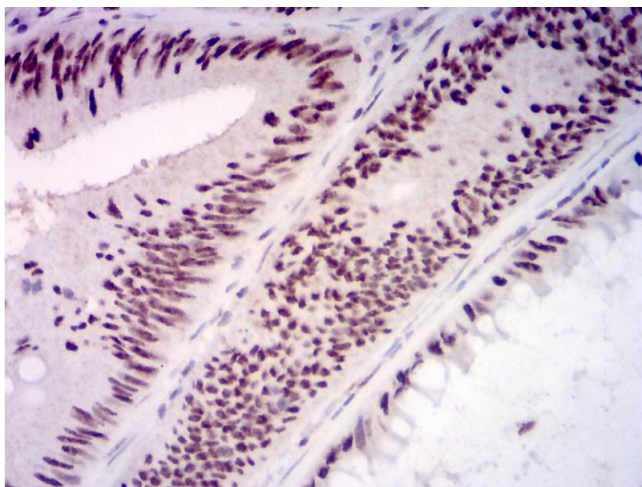
Preservative: Sodium azide

Precaution of Use: This product contains Sodium azide: a POISONOUS AND HAZARDOUS SUBSTANCE which should be handled by trained staff only.

Storage: 4 °C/-20 °C

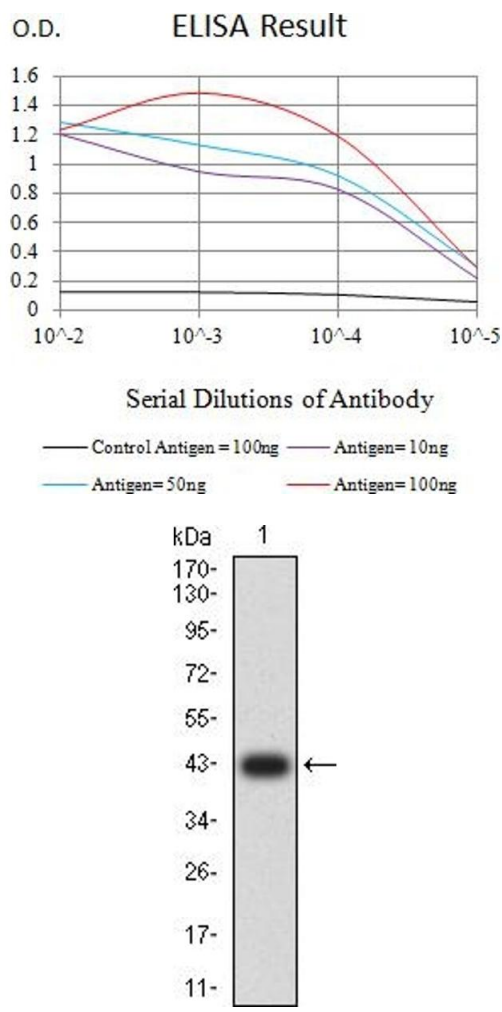
Storage Comment: 4°C, -20°C for long term storage

Images



Immunohistochemistry

Image 1. Immunohistochemical analysis of paraffin-embedded rectum cancer tissues using KMT2D mouse mAb with DAB staining.



ELISA

Image 2. Black line: Control Antigen (100 ng),Purple line: Antigen (10 ng), Blue line: Antigen (50 ng), Red line:Antigen (100 ng)

Western Blotting

Image 3. Western blot analysis using KMT2D mAb against human KMT2D (AA: 445-599) recombinant protein. (Expected MW is 42.2 kDa)

Please check the [product details page](#) for more images. Overall 6 images are available for ABIN7193438.