



[Go to Product page](#)

Datasheet for ABIN7193443
anti-Caspase 6 antibody (AA 194-293)

5 Images

Overview

Quantity:	0.1 mg
Target:	Caspase 6 (CASP6)
Binding Specificity:	AA 194-293
Reactivity:	Human
Host:	Mouse
Clonality:	Monoclonal
Conjugate:	This Caspase 6 antibody is un-conjugated
Application:	Western Blotting (WB), ELISA, Immunocytochemistry (ICC), Flow Cytometry (FACS)

Product Details

Immunogen:	Purified recombinant fragment of human CASP6 (AA: 194-293) expressed in E. coli.
Clone:	3B7E10
Isotype:	IgG2a
Purification:	purified

Target Details

Target:	Caspase 6 (CASP6)
Alternative Name:	CASP6 (CASP6 Products)
Background:	Description: This gene encodes a member of the cysteine-aspartic acid protease (caspase) family of enzymes. Sequential activation of caspases plays a central role in the execution-

Target Details

phase of cell apoptosis. Caspases exist as inactive proenzymes which undergo proteolytic processing at conserved aspartic acid residues to produce two subunits, large and small, that dimerize to form the active enzyme. This protein is processed by caspases 7, 8 and 10, and is thought to function as a downstream enzyme in the caspase activation cascade. Alternative splicing of this gene results in multiple transcript variants that encode different isoforms.

Aliases: MCH2

Molecular Weight: 33.3 kDa

Gene ID: 839

Pathways: [Apoptosis, Caspase Cascade in Apoptosis](#)

Application Details

Application Notes: WB:1:500 - 1:2000, ICC:1:100 - 1:500, FCM:1:200 - 1:400, ELISA:1:10000,

Restrictions: For Research Use only

Handling

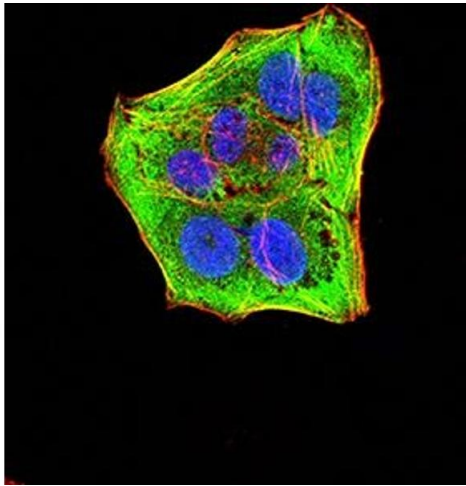
Buffer: Purified antibody in PBS with 0.05 % sodium azide

Preservative: Sodium azide

Precaution of Use: This product contains Sodium azide: a POISONOUS AND HAZARDOUS SUBSTANCE which should be handled by trained staff only.

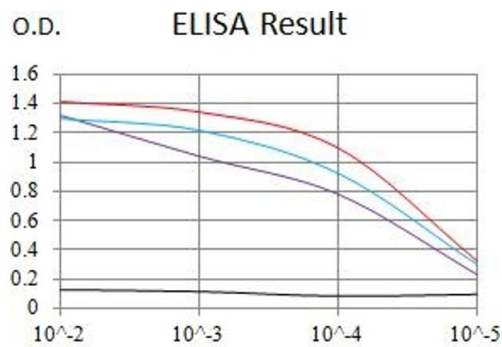
Storage: 4 °C/-20 °C

Storage Comment: 4°C, -20°C for long term storage



Immunofluorescence

Image 1. Immunofluorescence analysis of HeLa cells using CASP6 mouse mAb (green). Blue: DRAQ5 fluorescent DNA dye. Red: Actin filaments have been labeled with Alexa Fluor- 555 phalloidin. Secondary antibody from Fisher (Cat#: 35503)

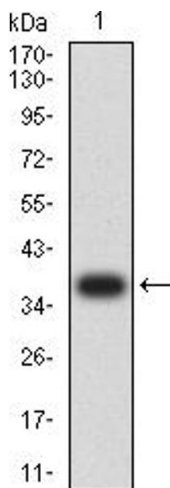


ELISA

Image 2. Black line: Control Antigen (100 ng),Purple line: Antigen (10 ng), Blue line: Antigen (50 ng), Red line:Antigen (100 ng)

Serial Dilutions of Antibody

— Control Antigen = 100ng — Antigen = 10ng
 — Antigen = 50ng — Antigen = 100ng



Western Blotting

Image 3. Western blot analysis using CASP6 mAb against human CASP6 (AA: 194-293) recombinant protein. (Expected MW is 37.2 kDa)

Please check the [product details page](#) for more images. Overall 5 images are available for ABIN7193443.