

Datasheet for ABIN7193445  
**anti-Rubicon antibody (AA 859-972)**



[Go to Product page](#)

3 Images

## Overview

Quantity:	100 µL
Target:	Rubicon (KIAA0226)
Binding Specificity:	AA 859-972
Reactivity:	Human
Host:	Mouse
Clonality:	Monoclonal
Conjugate:	This Rubicon antibody is un-conjugated
Application:	Western Blotting (WB), ELISA

## Product Details

Immunogen:	Purified recombinant fragment of human RUBCN (AA: 859-972) expressed in E. coli.
Clone:	4F5B5
Isotype:	IgG1
Purification:	purified

## Target Details

Target:	Rubicon (KIAA0226)
Alternative Name:	RUBCN ( <a href="#">KIAA0226 Products</a> )
Background:	Description: The protein encoded by this gene is a negative regulator of autophagy and endocytic trafficking and controls endosome maturation. This protein contains two conserved

## Target Details

---

domains, an N-terminal RUN domain and a C-terminal DUF4206 domain. The RUN domain is involved in Ras-like GTPase signaling, and the DUF4206 domain contains a diacylglycerol (DAG) binding-like motif. Mutation in this gene results in deletion of the DAG binding-like motif and causes a recessive ataxia. Alternatively spliced transcript variants encoding distinct isoforms have been found for this gene.

Aliases: SCAR15, RUBICON, KIAA0226

---

Molecular Weight: 108.6 kDa

---

Gene ID: 9711

---

Pathways: [Autophagy](#)

## Application Details

---

Application Notes: WB:1:500 - 1:2000, ELISA:1:10000,

---

Restrictions: For Research Use only

## Handling

---

Buffer: Purified antibody in PBS with 0.05 % sodium azide

---

Preservative: Sodium azide

---

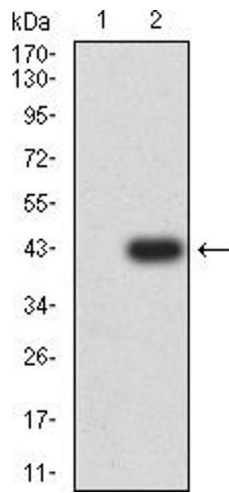
Precaution of Use: This product contains Sodium azide: a POISONOUS AND HAZARDOUS SUBSTANCE which should be handled by trained staff only.

---

Storage: 4 °C/-20 °C

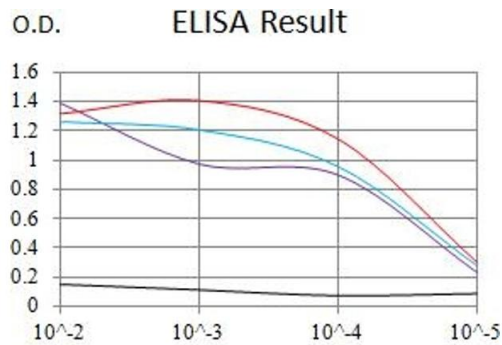
---

Storage Comment: 4°C, -20°C for long term storage



### Western Blotting

**Image 1.** Western blot analysis using RUBCN mAb against HEK293 (1) and RUBCN (AA: 859-972)-hlgGFc transfected HEK293 (2) cell lysate.

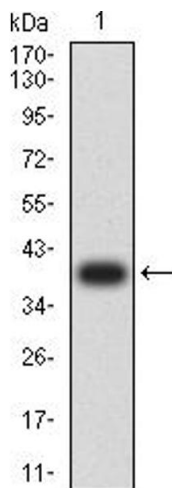


### ELISA

**Image 2.** Black line: Control Antigen (100 ng), Purple line: Antigen (10 ng), Blue line: Antigen (50 ng), Red line: Antigen (100 ng)

### Serial Dilutions of Antibody

— Control Antigen = 100ng — Antigen = 10ng  
 — Antigen = 50ng — Antigen = 100ng



### Western Blotting

**Image 3.** Western blot analysis using RUBCN mAb against human RUBCN (AA: 859-972) recombinant protein. (Expected MW is 38.8 kDa)