



[Go to Product page](#)

Datasheet for ABIN7193451

## anti-Cytochrome C antibody (AA 1-105)

### 7 Images

#### Overview

Quantity:	0.1 mg
Target:	Cytochrome C (CYCS)
Binding Specificity:	AA 1-105
Reactivity:	Human, Mouse
Host:	Mouse
Clonality:	Monoclonal
Conjugate:	This Cytochrome C antibody is un-conjugated
Application:	Western Blotting (WB), Immunohistochemistry (IHC), Flow Cytometry (FACS), ELISA

#### Product Details

Immunogen:	Purified recombinant fragment of human CYCS (AA: 1-105) expressed in E. coli.
Clone:	5E6B11
Isotype:	IgG1
Purification:	purified

#### Target Details

Target:	Cytochrome C (CYCS)
Alternative Name:	CYCS ( <a href="#">CYCS Products</a> )
Background:	Description: This gene encodes a small heme protein that functions as a central component of the electron transport chain in mitochondria. The encoded protein associates with the inner

## Target Details

---

membrane of the mitochondrion where it accepts electrons from cytochrome b and transfers them to the cytochrome oxidase complex. This protein is also involved in initiation of apoptosis. Mutations in this gene are associated with autosomal dominant nonsyndromic thrombocytopenia. Numerous processed pseudogenes of this gene are found throughout the human genome.

Aliases: CYC, HCS, THC4

---

Molecular Weight: 11.7 kDa

---

Gene ID: 54205

---

Pathways: [Apoptosis](#), [Caspase Cascade in Apoptosis](#), [Positive Regulation of Endopeptidase Activity](#)

## Application Details

---

---

Application Notes: WB:1:500 - 1:2000, IHC:1:200 - 1:1000, FCM:1:200 - 1:400, ELISA:1:10000,

---

Restrictions: For Research Use only

## Handling

---

---

Buffer: Purified antibody in PBS with 0.05 % sodium azide

---

Preservative: Sodium azide

---

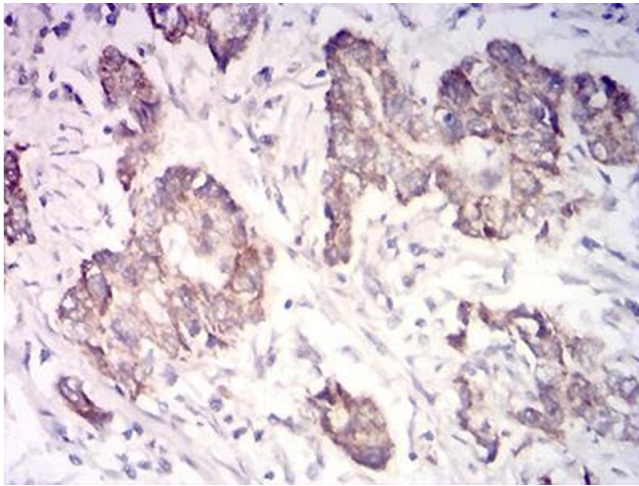
Precaution of Use: This product contains Sodium azide: a POISONOUS AND HAZARDOUS SUBSTANCE which should be handled by trained staff only.

---

Storage: 4 °C/-20 °C

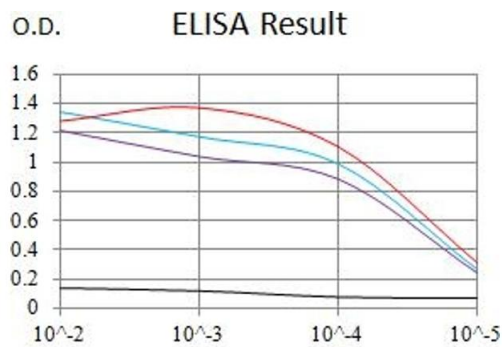
---

Storage Comment: 4°C, -20°C for long term storage



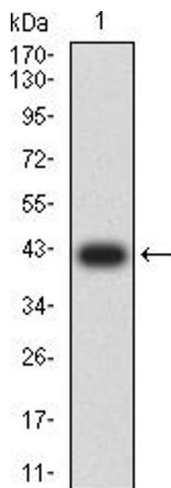
### Immunohistochemistry

**Image 1.** Immunohistochemical analysis of paraffin-embedded stomach cancer tissues using CYCS mouse mAb with DAB staining.



### Serial Dilutions of Antibody

— Control Antigen = 100ng — Antigen = 10ng  
 — Antigen = 50ng — Antigen = 100ng



### ELISA

**Image 2.** Black line: Control Antigen (100 ng),Purple line: Antigen (10 ng), Blue line: Antigen (50 ng), Red line:Antigen (100 ng)

### Western Blotting

**Image 3.** Western blot analysis using CYCS mAb against human CYCS (AA: 1-105) recombinant protein. (Expected MW is 41.6 kDa)

Please check the [product details page](#) for more images. Overall 7 images are available for ABIN7193451.