

Datasheet for ABIN7193453  
**anti-Mesothelin antibody (AA 37-286)**

## 5 Images

[Go to Product page](#)

## Overview

Quantity:	0.1 mg
Target:	Mesothelin (MSLN)
Binding Specificity:	AA 37-286
Reactivity:	Human, Mouse
Host:	Mouse
Clonality:	Monoclonal
Conjugate:	This Mesothelin antibody is un-conjugated
Application:	ELISA, Western Blotting (WB), Flow Cytometry (FACS)

## Product Details

Immunogen:	Purified recombinant fragment of human MSLN (AA: 37-286) expressed in E. coli.
Clone:	5C11A4
Isotype:	IgG1
Purification:	purified

## Target Details

Target:	Mesothelin (MSLN)
Alternative Name:	MSLN ( <a href="#">MSLN Products</a> )
Background:	Description: This gene encodes a preproprotein that is proteolytically processed to generate two protein products, megakaryocyte potentiating factor and mesothelin. Megakaryocyte

## Target Details

potentiating factor functions as a cytokine that can stimulate colony formation of bone marrow megakaryocytes. Mesothelin is a glycosylphosphatidylinositol-anchored cell-surface protein that may function as a cell adhesion protein. This protein is overexpressed in epithelial mesotheliomas, ovarian cancers and in specific squamous cell carcinomas. Alternative splicing results in multiple transcript variants, at least one of which encodes an isoform that is proteolytically processed.

Aliases: MPF, SMRP

Molecular Weight: 69 kDa

Gene ID: 10232

Pathways: [EGFR Signaling Pathway](#), [Positive Regulation of Peptide Hormone Secretion](#), [Intracellular Steroid Hormone Receptor Signaling Pathway](#), [Steroid Hormone Mediated Signaling Pathway](#), [Carbohydrate Homeostasis](#), [cAMP Metabolic Process](#), [Regulation of G-Protein Coupled Receptor Protein Signaling](#), [Positive Regulation of Endopeptidase Activity](#), [Regulation of Carbohydrate Metabolic Process](#)

## Application Details

Application Notes: WB:1:500 - 1:2000, FCM:1:200 - 1:400, ELISA:1:10000,

Restrictions: For Research Use only

## Handling

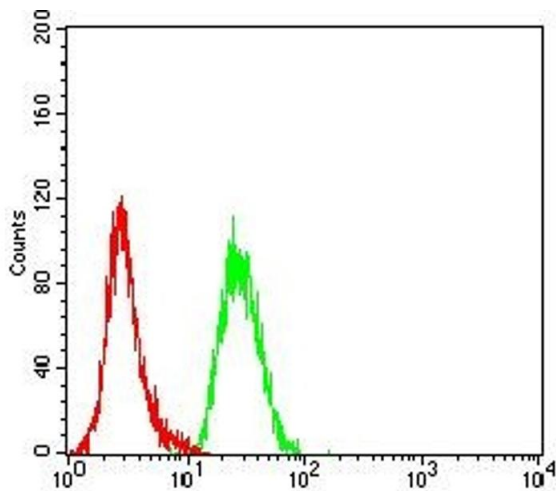
Buffer: Purified antibody in PBS with 0.05 % sodium azide

Preservative: Sodium azide

Precaution of Use: This product contains Sodium azide: a POISONOUS AND HAZARDOUS SUBSTANCE which should be handled by trained staff only.

Storage: 4 °C/-20 °C

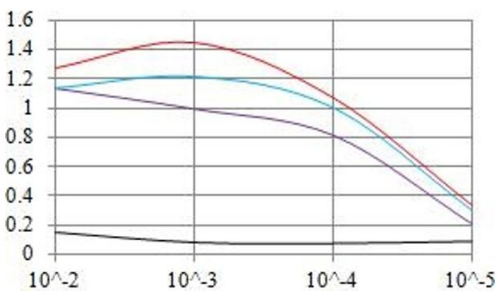
Storage Comment: 4°C, -20°C for long term storage



### Flow Cytometry

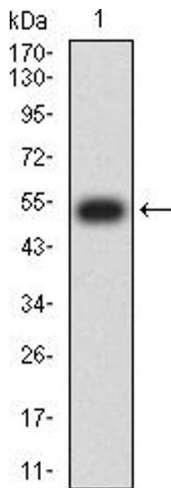
**Image 1.** Flow cytometric analysis of Hela cells using MSLN mouse mAb (green) and negative control (red).

### ELISA Result



### Serial Dilutions of Antibody

— Control Antigen = 100ng — Antigen = 10ng  
— Antigen = 50ng — Antigen = 100ng



### ELISA

**Image 2.** Black line: Control Antigen (100 ng), Purple line: Antigen (10 ng), Blue line: Antigen (50 ng), Red line: Antigen (100 ng)

### Western Blotting

**Image 3.** Western blot analysis using MSLN mAb against human MSLN (AA: 37-286) recombinant protein. (Expected MW is 52.7 kDa)

Please check the [product details page](#) for more images. Overall 5 images are available for ABIN7193453.