

Datasheet for ABIN7193454
anti-Mesothelin antibody (AA 37-286)



[Go to Product page](#)

4 Images

Overview

Quantity:	100 µL
Target:	Mesothelin (MSLN)
Binding Specificity:	AA 37-286
Reactivity:	Human
Host:	Mouse
Clonality:	Monoclonal
Conjugate:	This Mesothelin antibody is un-conjugated
Application:	ELISA, Flow Cytometry (FACS)

Product Details

Purpose:	MSLN Antibody
Immunogen:	Purified recombinant fragment of human MSLN (AA: 37-286) expressed in E. Coli.
Clone:	4H12F8
Isotype:	IgG1
Purification:	Purified antibody

Target Details

Target:	Mesothelin (MSLN)
Alternative Name:	MSLN (MSLN Products)
Background:	Description:

Target Details

This gene encodes a preproprotein that is proteolytically processed to generate two protein products, megakaryocyte potentiating factor and mesothelin. Megakaryocyte potentiating factor functions as a cytokine that can stimulate colony formation of bone marrow megakaryocytes. Mesothelin is a glycosylphosphatidylinositol-anchored cell-surface protein that may function as a cell adhesion protein. This protein is overexpressed in epithelial mesotheliomas, ovarian cancers and in specific squamous cell carcinomas. Alternative splicing results in multiple transcript variants, at least one of which encodes an isoform that is proteolytically processed.

Aliases: MPF, SMRP

Molecular Weight: 69kDa

Gene ID: 10232

UniProt: [Q13421](#)

Pathways: [EGFR Signaling Pathway](#), [Positive Regulation of Peptide Hormone Secretion](#), [Intracellular Steroid Hormone Receptor Signaling Pathway](#), [Steroid Hormone Mediated Signaling Pathway](#), [Carbohydrate Homeostasis](#), [cAMP Metabolic Process](#), [Regulation of G-Protein Coupled Receptor Protein Signaling](#), [Positive Regulation of Endopeptidase Activity](#), [Regulation of Carbohydrate Metabolic Process](#)

Application Details

Application Notes: ELISA: 1/10000
FCM: 1/200 - 1/400

Restrictions: For Research Use only

Handling

Format: Liquid

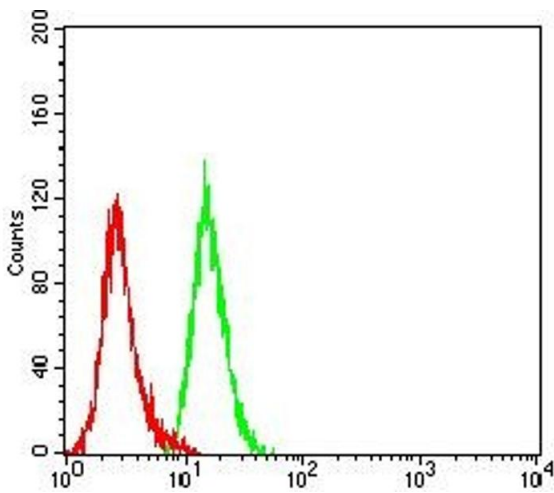
Buffer: Purified antibody in PBS with 0.05 % sodium azide.

Preservative: Sodium azide

Precaution of Use: This product contains Sodium azide: a POISONOUS AND HAZARDOUS SUBSTANCE which should be handled by trained staff only.

Storage: 4 °C,-20 °C

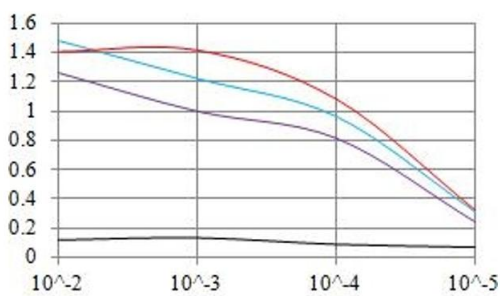
Storage Comment: Store at 4°C short term. Aliquot and store at -20°C long term. Avoid freeze/thaw cycles.



Flow Cytometry

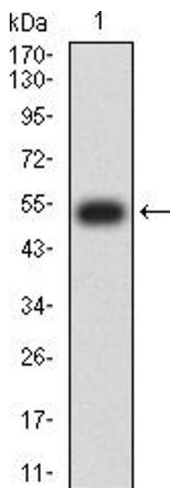
Image 1. Flow cytometric analysis of Hela cells using MSLN mouse mAb (green) and negative control (red).

O.D. ELISA Result



Serial Dilutions of Antibody

— Control Antigen = 100ng — Antigen = 10ng
 — Antigen = 50ng — Antigen = 100ng



ELISA

Image 2. Black line: Control Antigen (100 ng), Purple line: Antigen (10 ng), Blue line: Antigen (50 ng), Red line: Antigen (100 ng)

Western Blotting

Image 3. Western blot analysis using MSLN mAb against human MSLN (AA: 37-286) recombinant protein. (Expected MW is 52.7 kDa)

Please check the [product details page](#) for more images. Overall 4 images are available for ABIN7193454.