



[Go to Product page](#)

Datasheet for ABIN7193455
anti-ULBP2 antibody (AA 26-216)

4 Images

Overview

Quantity:	0.1 mg
Target:	ULBP2
Binding Specificity:	AA 26-216
Reactivity:	Human
Host:	Mouse
Clonality:	Monoclonal
Conjugate:	This ULBP2 antibody is un-conjugated
Application:	Western Blotting (WB), ELISA, Flow Cytometry (FACS)

Product Details

Immunogen:	Purified recombinant fragment of human ULBP2 (AA: 26-216) expressed in E. coli.
Clone:	1F12C2
Isotype:	IgG1
Purification:	purified

Target Details

Target:	ULBP2
Alternative Name:	ULBP2 (ULBP2 Products)
Background:	Description: This gene encodes a major histocompatibility complex (MHC) class I-related molecule that binds to the NKG2D receptor on natural killer (NK) cells to trigger release of

Target Details

multiple cytokines and chemokines that in turn contribute to the recruitment and activation of NK cells. The encoded protein undergoes further processing to generate the mature protein that is either anchored to membrane via a glycosylphosphatidylinositol moiety, or secreted. Many malignant cells secrete the encoded protein to evade immunosurveillance by NK cells. This gene is located in a cluster of multiple MHC class I-related genes on chromosome 6. [provided by RefSeq, Jul 2015]

Aliases: N2DL2, RAET1H, RAET1L, NKG2DL2, ALCAN-alpha

Molecular Weight: 27.4 kDa

Gene ID: 80328

Application Details

Application Notes: WB:1:500 - 1:2000, FCM:1:200 - 1:400, ELISA:1:10000,

Restrictions: For Research Use only

Handling

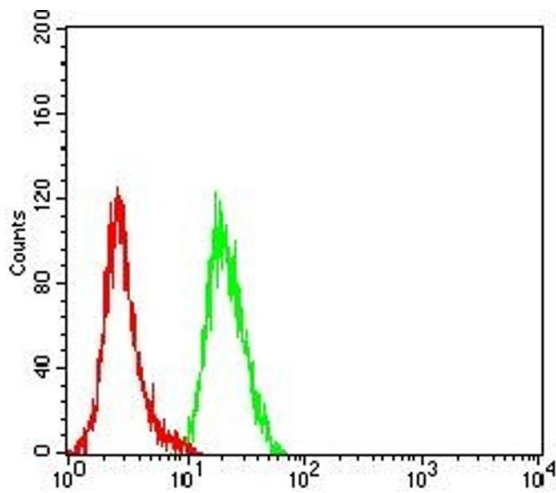
Buffer: Purified antibody in PBS with 0.05 % sodium azide

Preservative: Sodium azide

Precaution of Use: This product contains Sodium azide: a POISONOUS AND HAZARDOUS SUBSTANCE which should be handled by trained staff only.

Storage: 4 °C/-20 °C

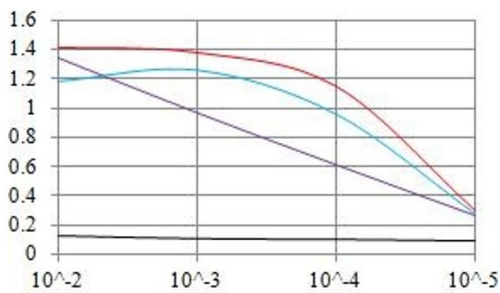
Storage Comment: 4°C, -20°C for long term storage



Flow Cytometry

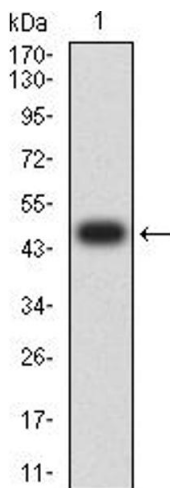
Image 1. Flow cytometric analysis of HeLa cells using ULBP2 mouse mAb (green) and negative control (red).

O.D. ELISA Result



Serial Dilutions of Antibody

— Control Antigen = 100ng — Antigen = 10ng
 — Antigen = 50ng — Antigen = 100ng



ELISA

Image 2. Black line: Control Antigen (100 ng), Purple line: Antigen (10 ng), Blue line: Antigen (50 ng), Red line: Antigen (100 ng)

Western Blotting

Image 3. Western blot analysis using ULBP2 mAb against human ULBP2 (AA: 26-216) recombinant protein. (Expected MW is 47.6 kDa)

Please check the [product details page](#) for more images. Overall 4 images are available for ABIN7193455.