

Datasheet for ABIN7193465  
**anti-ATG4B antibody (AA 1-221)**



[Go to Product page](#)

5 Images

## Overview

Quantity:	100 µL
Target:	ATG4B
Binding Specificity:	AA 1-221
Reactivity:	Human
Host:	Mouse
Clonality:	Monoclonal
Conjugate:	This ATG4B antibody is un-conjugated
Application:	Western Blotting (WB), ELISA, Immunohistochemistry (IHC), Flow Cytometry (FACS)

## Product Details

Purpose:	ATG4B Antibody
Immunogen:	Purified recombinant fragment of human ATG4B (AA: 1-221) expressed in E. Coli.
Clone:	4H9A5
Isotype:	IgG1
Purification:	Purified antibody

## Target Details

Target:	ATG4B
Alternative Name:	ATG4B ( <a href="#">ATG4B Products</a> )
Background:	Description:

## Target Details

---

Autophagy is the process by which endogenous proteins and damaged organelles are destroyed intracellularly. Autophagy is postulated to be essential for cell homeostasis and cell remodeling during differentiation, metamorphosis, non-apoptotic cell death, and aging. Reduced levels of autophagy have been described in some malignant tumors, and a role for autophagy in controlling the unregulated cell growth linked to cancer has been proposed. This gene encodes a member of the autophagin protein family. The encoded protein is also designated as a member of the C-54 family of cysteine proteases. Alternate transcriptional splice variants, encoding different isoforms, have been characterized. [provided by RefSeq, Jul 2008]

Aliases: APG4B, AUTL1

---

Molecular Weight: 44.3kDa

---

Gene ID: 23192

---

UniProt: [Q9Y4P1](#)

---

Pathways: [Autophagy](#)

## Application Details

---

Application Notes: ELISA: 1/10000  
FCM: 1/200 - 1/400

---

Restrictions: For Research Use only

## Handling

---

Format: Liquid

---

Buffer: Purified antibody in PBS with 0.05 % sodium azide.

---

Preservative: Sodium azide

---

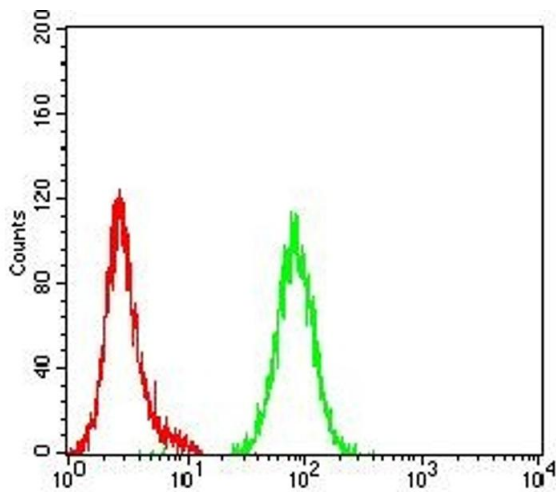
Precaution of Use: This product contains Sodium azide: a POISONOUS AND HAZARDOUS SUBSTANCE which should be handled by trained staff only.

---

Storage: 4 °C,-20 °C

---

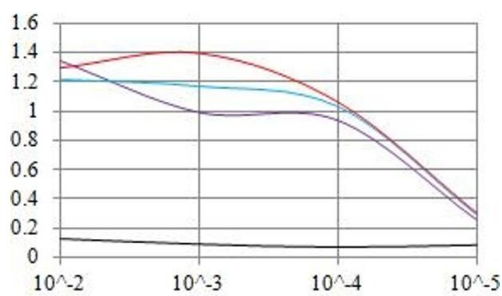
Storage Comment: Store at 4°C short term. Aliquot and store at -20°C long term. Avoid freeze/thaw cycles.



### Flow Cytometry

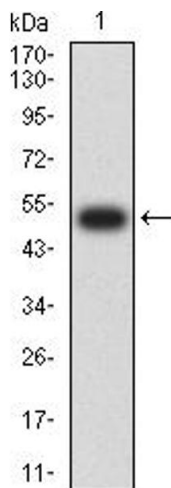
**Image 1.** Flow cytometric analysis of HeLa cells using ATG4B mouse mAb (green) and negative control (red).

### O.D. ELISA Result



### Serial Dilutions of Antibody

— Control Antigen = 100ng — Antigen = 10ng  
 — Antigen = 50ng — Antigen = 100ng



### ELISA

**Image 2.** Black line: Control Antigen (100 ng), Purple line: Antigen (10 ng), Blue line: Antigen (50 ng), Red line: Antigen (100 ng)

### Western Blotting

**Image 3.** Western blot analysis using ATG4B mAb against human ATG4B (AA: 1-221) recombinant protein. (Expected MW is 51 kDa)

Please check the [product details page](#) for more images. Overall 5 images are available for ABIN7193465.