



[Go to Product page](#)

Datasheet for ABIN7193468

anti-Cytokeratin 19 antibody (AA 80-400)

7 Images

Overview

Quantity:	0.1 mg
Target:	Cytokeratin 19 (KRT19)
Binding Specificity:	AA 80-400
Reactivity:	Human, Rat
Host:	Mouse
Clonality:	Monoclonal
Application:	Western Blotting (WB), Immunohistochemistry (IHC), Flow Cytometry (FACS), ELISA

Product Details

Immunogen:	Purified recombinant fragment of human KRT19 (AA: 80-400) expressed in E. coli.
Clone:	2A1G9
Isotype:	IgG1
Purification:	purified

Target Details

Target:	Cytokeratin 19 (KRT19)
Alternative Name:	KRT19 (KRT19 Products)
Background:	Description: The protein encoded by this gene is a member of the keratin family. The keratins are intermediate filament proteins responsible for the structural integrity of epithelial cells and are subdivided into cytokeratins and hair keratins. The type I cytokeratins consist of acidic proteins which are arranged in pairs of heterotypic keratin chains. Unlike its related family

Target Details

members, this smallest known acidic cytokeratin is not paired with a basic cytokeratin in epithelial cells. It is specifically expressed in the periderm, the transiently superficial layer that envelopes the developing epidermis. The type I cytokeratins are clustered in a region of chromosome 17q12-q21. [provided by RefSeq, Jul 2008]

Aliases: K19, CK19, K1CS

Molecular Weight: 44.1 kDa

Gene ID: 3880

Application Details

Application Notes: WB:1:500 - 1:2000, IHC:1:200 - 1:1000, FCM:1:200 - 1:400, ELISA:1:10000,

Restrictions: For Research Use only

Handling

Buffer: Purified antibody in PBS with 0.05 % sodium azide

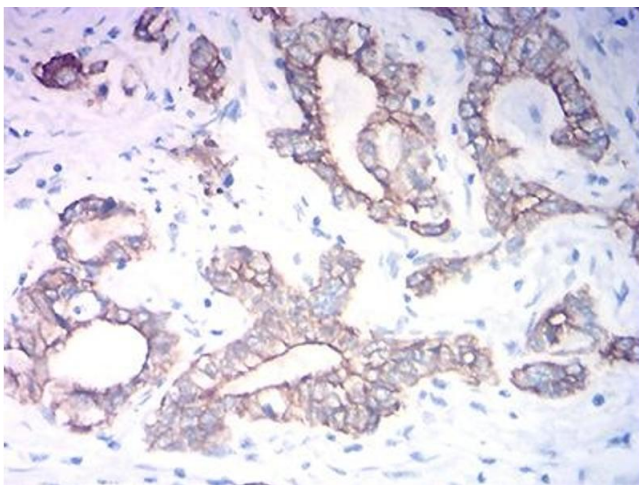
Preservative: Sodium azide

Precaution of Use: This product contains Sodium azide: a POISONOUS AND HAZARDOUS SUBSTANCE which should be handled by trained staff only.

Storage: 4 °C/-20 °C

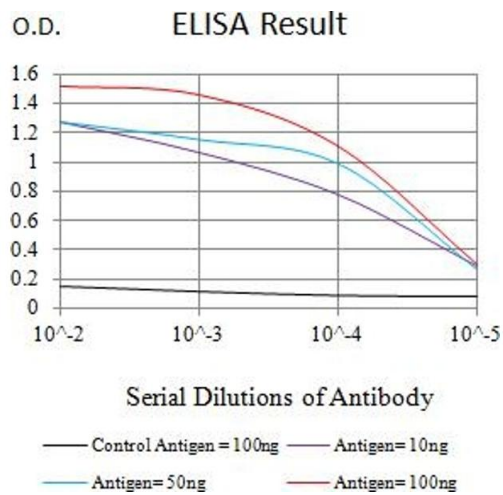
Storage Comment: 4°C, -20°C for long term storage

Images



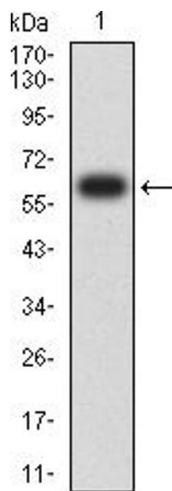
Immunohistochemistry

Image 1. Immunohistochemical analysis of paraffin-embedded stomach cancer tissues using KRT19 mouse mAb with DAB staining.



ELISA

Image 2. Black line: Control Antigen (100 ng),Purple line: Antigen (10 ng), Blue line: Antigen (50 ng), Red line:Antigen (100 ng)



Western Blotting

Image 3. Western blot analysis using KRT19 mAb against human KRT19 (AA: 80-400) recombinant protein. (Expected MW is 62.5 kDa)

Please check the [product details page](#) for more images. Overall 7 images are available for ABIN7193468.