



[Go to Product page](#)

Datasheet for ABIN7193471
anti-CD300a antibody (AA 18-180)

3 Images

Overview

Quantity:	0.1 mg
Target:	CD300a (CD300A)
Binding Specificity:	AA 18-180
Reactivity:	Human
Host:	Mouse
Clonality:	Monoclonal
Application:	Western Blotting (WB), ELISA

Product Details

Immunogen:	Purified recombinant fragment of human CD300A (AA: extra 18-180) expressed in E. coli.
Clone:	7H8E4
Isotype:	IgG1
Purification:	purified

Target Details

Target:	CD300a (CD300A)
Alternative Name:	CD300A (CD300A Products)
Background:	Description: This gene encodes a member of the CD300 glycoprotein family of cell surface proteins found on leukocytes involved in immune response signaling pathways. This gene is located on chromosome 17 in a cluster with all but one of the other family members. Multiple transcript variants encoding different isoforms have been found for this gene. [provided by

Target Details

RefSeq, Feb 2012]

Aliases: IRC1, IRC2, CLM-8, IRp60, IGSF12, CMRF35H, CMRF-35H, CMRF35-H, CMRF35H9, CMRF35-H9, IRC1/IRC2, CMRF-35-H9

Molecular Weight: 33.2 kDa

Gene ID: 11314

Pathways: [Regulation of Leukocyte Mediated Immunity](#), [Positive Regulation of Immune Effector Process](#)

Application Details

Application Notes: WB:1:500 - 1:2000, ELISA:1:10000,

Restrictions: For Research Use only

Handling

Buffer: Purified antibody in PBS with 0.05 % sodium azide

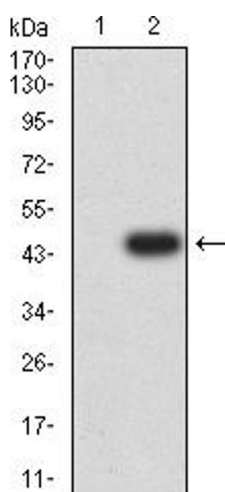
Preservative: Sodium azide

Precaution of Use: This product contains Sodium azide: a POISONOUS AND HAZARDOUS SUBSTANCE which should be handled by trained staff only.

Storage: 4 °C/-20 °C

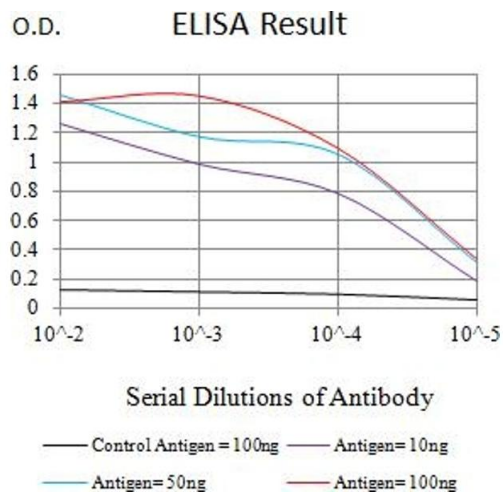
Storage Comment: 4°C, -20°C for long term storage

Images



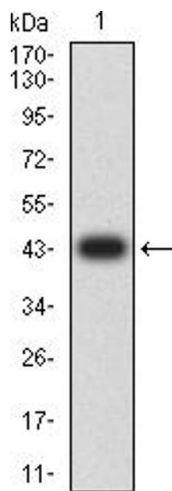
Western Blotting

Image 1. Western blot analysis using CD300A mAb against HEK293 (1) and CD300A (AA: extra 18-180)-hIgGFc transfected HEK293 (2) cell lysate.



ELISA

Image 2. Black line: Control Antigen (100 ng),Purple line: Antigen (10 ng), Blue line: Antigen (50 ng), Red line:Antigen (100 ng)



Western Blotting

Image 3. Western blot analysis using CD300A mAb against human CD300A (AA: extra 18-180) recombinant protein. (Expected MW is 43.6 kDa)