



[Go to Product page](#)

Datasheet for ABIN7193472

anti-COL1A1 antibody (AA 1219-1464)

4 Images

Overview

Quantity:	0.1 mg
Target:	COL1A1
Binding Specificity:	AA 1219-1464
Reactivity:	Human
Host:	Mouse
Clonality:	Monoclonal
Conjugate:	This COL1A1 antibody is un-conjugated
Application:	Western Blotting (WB), ELISA, Flow Cytometry (FACS)

Product Details

Immunogen:	Purified recombinant fragment of human COL1A1 (AA: 1219-1464) expressed in E. coli.
Clone:	7B1G12
Isotype:	IgG1
Purification:	purified

Target Details

Target:	COL1A1
Alternative Name:	COL1A1 (COL1A1 Products)
Background:	Description: This gene encodes the pro-alpha1 chains of type I collagen whose triple helix comprises two alpha1 chains and one alpha2 chain. Type I is a fibril-forming collagen found in

Target Details

most connective tissues and is abundant in bone, cornea, dermis and tendon. Mutations in this gene are associated with osteogenesis imperfecta types I-IV, Ehlers-Danlos syndrome type VIIA, Ehlers-Danlos syndrome Classical type, Caffey Disease and idiopathic osteoporosis. Reciprocal translocations between chromosomes 17 and 22, where this gene and the gene for platelet-derived growth factor beta are located, are associated with a particular type of skin tumor called dermatofibrosarcoma protuberans, resulting from unregulated expression of the growth factor. Two transcripts, resulting from the use of alternate polyadenylation signals, have been identified for this gene. [provided by R. Dagleish, Feb 2008]

Aliases: OI1, OI2, OI3, OI4, EDSC, EDSARTH1

Molecular Weight: 139 kDa

Gene ID: 1277

Pathways: [Sensory Perception of Sound](#), [Autophagy](#), [Growth Factor Binding](#)

Application Details

Application Notes: WB:1:500 - 1:2000, FCM:1:200 - 1:400, ELISA:1:10000,

Restrictions: For Research Use only

Handling

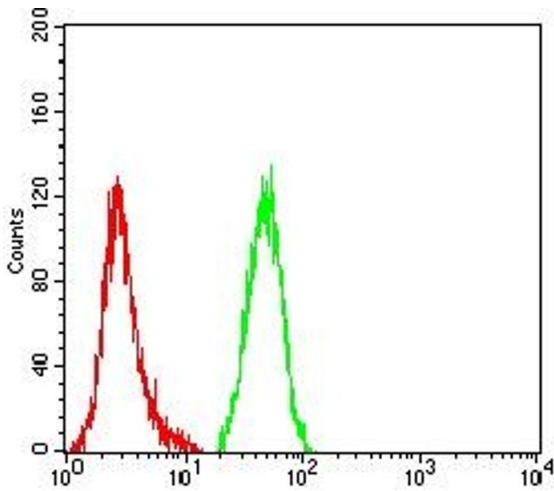
Buffer: Purified antibody in PBS with 0.05 % sodium azide

Preservative: Sodium azide

Precaution of Use: This product contains Sodium azide: a POISONOUS AND HAZARDOUS SUBSTANCE which should be handled by trained staff only.

Storage: 4 °C/-20 °C

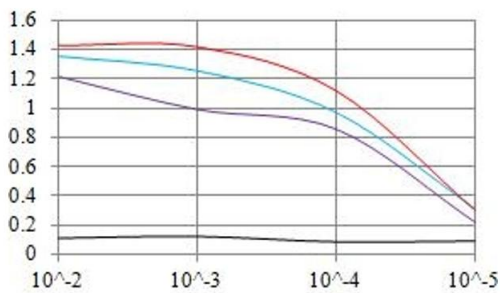
Storage Comment: 4°C, -20°C for long term storage



Flow Cytometry

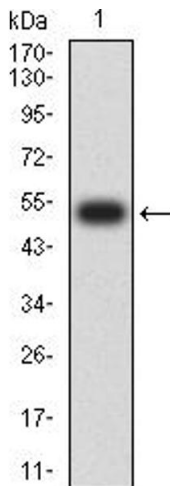
Image 1. Flow cytometric analysis of HeLa cells using COL1A1 mouse mAb (green) and negative control (red).

O.D. ELISA Result



Serial Dilutions of Antibody

— Control Antigen = 100ng — Antigen = 10ng
 — Antigen = 50ng — Antigen = 100ng



ELISA

Image 2. Black line: Control Antigen (100 ng), Purple line: Antigen (10 ng), Blue line: Antigen (50 ng), Red line: Antigen (100 ng)

Western Blotting

Image 3. Western blot analysis using COL1A1 mAb against human COL1A1 (AA: 1219-1464) recombinant protein. (Expected MW is 53.5 kDa)

Please check the [product details page](#) for more images. Overall 4 images are available for ABIN7193472.