

Datasheet for ABIN7193486
anti-MSH6 antibody (AA 217-395)

3 Images



[Go to Product page](#)

Overview

Quantity:	100 µL
Target:	MSH6
Binding Specificity:	AA 217-395
Reactivity:	Human
Host:	Mouse
Clonality:	Monoclonal
Conjugate:	This MSH6 antibody is un-conjugated
Application:	ELISA

Product Details

Purpose:	MSH6 Antibody
Immunogen:	Purified recombinant fragment of human MSH6 (AA: 217-395) expressed in E. Coli.
Clone:	1D10G1
Isotype:	IgG1
Purification:	Purified antibody

Target Details

Target:	MSH6
Alternative Name:	MSH6 (MSH6 Products)
Background:	Description:

Target Details

This gene encodes a member of the DNA mismatch repair MutS family. In E. coli, the MutS protein helps in the recognition of mismatched nucleotides prior to their repair. A highly conserved region of approximately 150 aa, called the Walker-A adenine nucleotide binding motif, exists in MutS homologs. The encoded protein heterodimerizes with MSH2 to form a mismatch recognition complex that functions as a bidirectional molecular switch that exchanges ADP and ATP as DNA mismatches are bound and dissociated. Mutations in this gene may be associated with hereditary nonpolyposis colon cancer, colorectal cancer, and endometrial cancer. Transcripts variants encoding different isoforms have been described.

Aliases: GTBP, HSAP, p160, GTMBP, HNPCC5

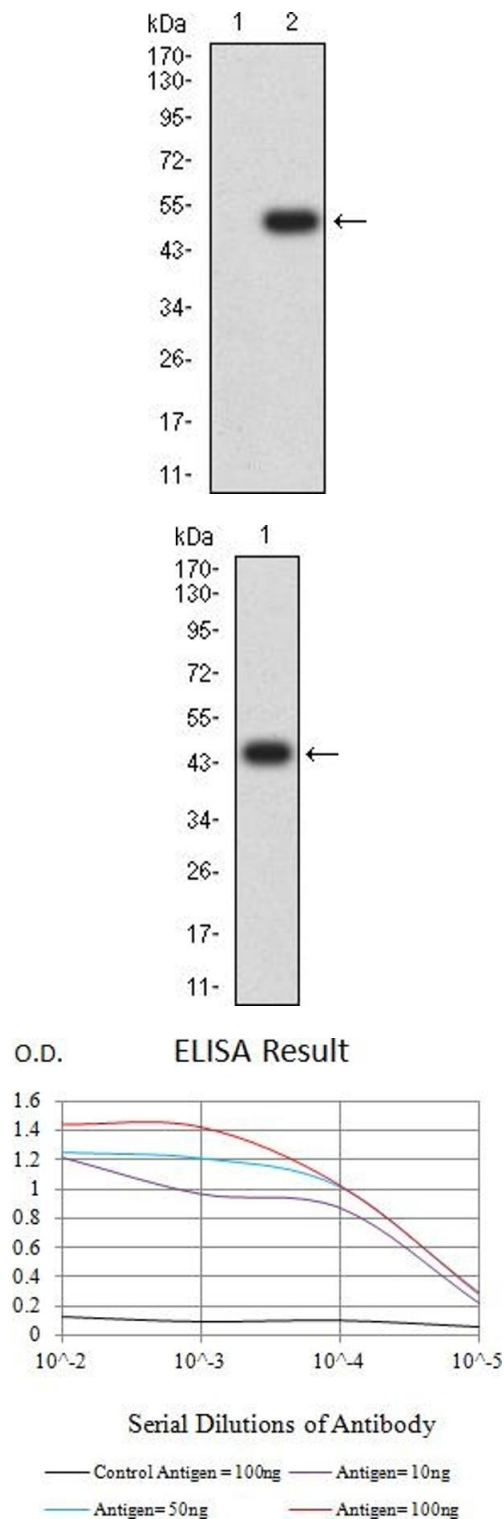
Molecular Weight:	152.8kDa
Gene ID:	2956
UniProt:	P52701
Pathways:	DNA Damage Repair , Chromatin Binding , Production of Molecular Mediator of Immune Response

Application Details

Application Notes:	ELISA: 1/10000
Restrictions:	For Research Use only

Handling

Format:	Liquid
Buffer:	Purified antibody in PBS with 0.05 % sodium azide.
Preservative:	Sodium azide
Precaution of Use:	This product contains Sodium azide: a POISONOUS AND HAZARDOUS SUBSTANCE which should be handled by trained staff only.
Storage:	4 °C,-20 °C
Storage Comment:	Store at 4°C short term. Aliquot and store at -20°C long term. Avoid freeze/thaw cycles.



Western Blotting

Image 1. Western blot analysis using MSH6 mAb against HEK293 (1) and MSH6 (AA: 217-395)-hlgGFc transfected HEK293 (2) cell lysate.

Western Blotting

Image 2. Western blot analysis using MSH6 mAb against human MSH6 (AA: 217-395) recombinant protein. (Expected MW is 45.9 kDa)

ELISA

Image 3. Black line: Control Antigen (100 ng),Purple line: Antigen (10 ng), Blue line: Antigen (50 ng), Red line:Antigen (100 ng)