

Datasheet for ABIN7193488
anti-PMS2 antibody (AA 748-851)



[Go to Product page](#)

5 Images

Overview

Quantity:	100 µL
Target:	PMS2
Binding Specificity:	AA 748-851
Reactivity:	Human
Host:	Mouse
Clonality:	Monoclonal
Conjugate:	This PMS2 antibody is un-conjugated
Application:	Western Blotting (WB), ELISA, Flow Cytometry (FACS)

Product Details

Purpose:	PMS2 Antibody
Immunogen:	Purified recombinant fragment of human PMS2 (AA: 748-851) expressed in E. Coli.
Clone:	6A12H9
Isotype:	IgG1
Purification:	Purified antibody

Target Details

Target:	PMS2
Alternative Name:	PMS2 (PMS2 Products)
Background:	Description:

Target Details

The protein encoded by this gene is a key component of the mismatch repair system that functions to correct DNA mismatches and small insertions and deletions that can occur during DNA replication and homologous recombination. This protein forms heterodimers with the gene product of the mutL homolog 1 (MLH1) gene to form the MutL-alpha heterodimer. The MutL-alpha heterodimer possesses an endonucleolytic activity that is activated following recognition of mismatches and insertion/deletion loops by the MutS-alpha and MutS-beta heterodimers, and is necessary for removal of the mismatched DNA. There is a DQHA(X)2E(X)4E motif found at the C-terminus of the protein encoded by this gene that forms part of the active site of the nuclease. Mutations in this gene have been associated with hereditary nonpolyposis colorectal cancer (HNPCC, also known as Lynch syndrome) and Turcot syndrome.

Aliases: MLH4, PMSL2, HNPCC4, PMS2CL

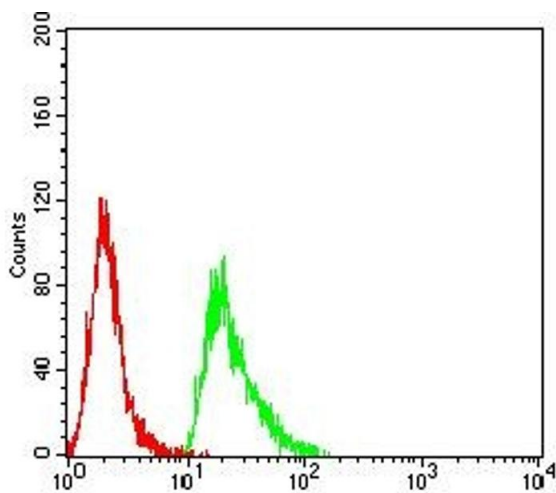
Molecular Weight:	95.8kDa
Gene ID:	5395
UniProt:	P54278
Pathways:	DNA Damage Repair , Production of Molecular Mediator of Immune Response

Application Details

Application Notes:	ELISA: 1/10000 FCM: 1/200 - 1/400
Restrictions:	For Research Use only

Handling

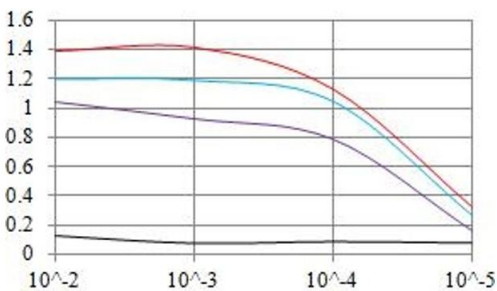
Format:	Liquid
Buffer:	Purified antibody in PBS with 0.05 % sodium azide.
Preservative:	Sodium azide
Precaution of Use:	This product contains Sodium azide: a POISONOUS AND HAZARDOUS SUBSTANCE which should be handled by trained staff only.
Storage:	4 °C,-20 °C
Storage Comment:	Store at 4°C short term. Aliquot and store at -20°C long term. Avoid freeze/thaw cycles.



Flow Cytometry

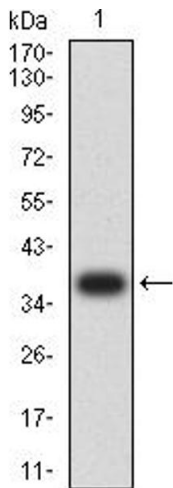
Image 1. Flow cytometric analysis of Hela cells using PMS2 mouse mAb (green) and negative control (red).

O.D. ELISA Result



Serial Dilutions of Antibody

— Control Antigen = 100ng — Antigen = 10ng
— Antigen = 50ng — Antigen = 100ng



ELISA

Image 2. Black line: Control Antigen (100 ng),Purple line: Antigen (10 ng), Blue line: Antigen (50 ng), Red line:Antigen (100 ng)

Western Blotting

Image 3. Western blot analysis using PMS2 mAb against human PMS2 (AA: 748-851) recombinant protein. (Expected MW is 37.7 kDa)

Please check the [product details page](#) for more images. Overall 5 images are available for ABIN7193488.