

Datasheet for ABIN7193492  
**anti-CKM antibody (AA 1-381)**

3 Images



[Go to Product page](#)

## Overview

Quantity:	100 µL
Target:	CKM
Binding Specificity:	AA 1-381
Reactivity:	Human
Host:	Mouse
Clonality:	Monoclonal
Conjugate:	This CKM antibody is un-conjugated
Application:	ELISA

## Product Details

Purpose:	CKM Antibody
Immunogen:	Purified recombinant fragment of human CKM (AA: 1-381) expressed in E. Coli.
Clone:	1D10E10
Isotype:	IgG1
Purification:	Purified antibody

## Target Details

Target:	CKM
Alternative Name:	CKM ( <a href="#">CKM Products</a> )
Background:	Description:

## Target Details

The protein encoded by this gene is a cytoplasmic enzyme involved in energy homeostasis and is an important serum marker for myocardial infarction. The encoded protein reversibly catalyzes the transfer of phosphate between ATP and various phosphogens such as creatine phosphate. It acts as a homodimer in striated muscle as well as in other tissues, and as a heterodimer with a similar brain isozyme in heart. The encoded protein is a member of the ATP:guanido phosphotransferase protein family.

Aliases: CKMM, M-CK, CPK-M

Molecular Weight: 43.1kDa

Gene ID: 1158

UniProt: [P06732](#)

## Application Details

Application Notes: ELISA: 1/10000

Restrictions: For Research Use only

## Handling

Format: Liquid

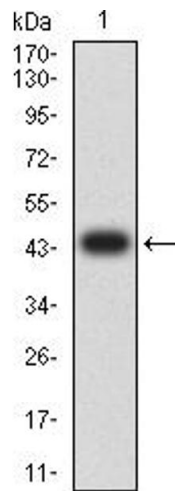
Buffer: Purified antibody in PBS with 0.05 % sodium azide.

Preservative: Sodium azide

Precaution of Use: This product contains Sodium azide: a POISONOUS AND HAZARDOUS SUBSTANCE which should be handled by trained staff only.

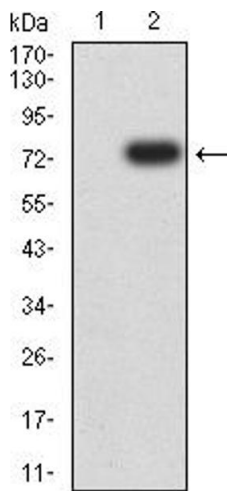
Storage: 4 °C,-20 °C

Storage Comment: Store at 4°C short term. Aliquot and store at -20°C long term. Avoid freeze/thaw cycles.



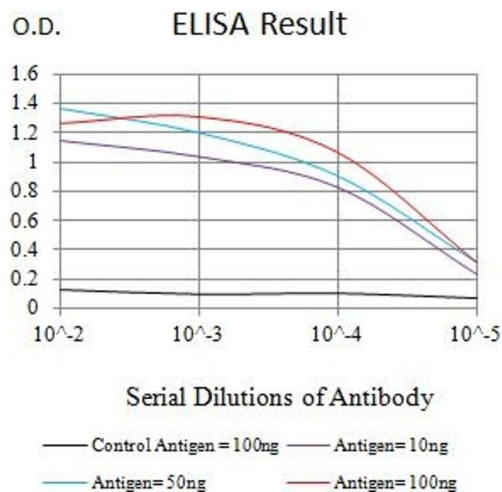
Western Blotting

**Image 1.** Western blot analysis using CKM mAb against human CKM (AA: 1-381) recombinant protein. (Expected MW is 46 kDa)



Western Blotting

**Image 2.** Western blot analysis using CKM mAb against HEK293 (1) and CKM (AA: 1-381)-hlgGFc transfected HEK293 (2) cell lysate.



ELISA

**Image 3.** Black line: Control Antigen (100 ng),Purple line: Antigen (10 ng), Blue line: Antigen (50 ng), Red line:Antigen (100 ng)