

Datasheet for ABIN7193505
anti-S100B antibody (AA 1-92)

5 Images

[Go to Product page](#)

Overview

Quantity:	0.1 mg
Target:	S100B
Binding Specificity:	AA 1-92
Reactivity:	Human
Host:	Mouse
Clonality:	Monoclonal
Conjugate:	This S100B antibody is un-conjugated
Application:	Western Blotting (WB), Immunohistochemistry (IHC), Flow Cytometry (FACS), ELISA

Product Details

Immunogen:	Purified recombinant fragment of human S100B (AA: 1-92) expressed in E. coli.
Clone:	4A5H7
Isotype:	IgG1
Purification:	purified

Target Details

Target:	S100B
Alternative Name:	S100B (S100B Products)
Background:	Description: The protein encoded by this gene is a member of the S100 family of proteins containing 2 EF-hand calcium-binding motifs. S100 proteins are localized in the cytoplasm

Target Details

and/or nucleus of a wide range of cells, and involved in the regulation of a number of cellular processes such as cell cycle progression and differentiation. S100 genes include at least 13 members which are located as a cluster on chromosome 1q21, however, this gene is located at 21q22.3. This protein may function in Neurite extension, proliferation of melanoma cells, stimulation of Ca²⁺ fluxes, inhibition of PKC-mediated phosphorylation, astrocytosis and axonal proliferation, and inhibition of microtubule assembly. Chromosomal rearrangements and altered expression of this gene have been implicated in several neurological, neoplastic, and other types of diseases, including Alzheimer's disease, Down's syndrome, epilepsy, amyotrophic lateral sclerosis, melanoma, and type I diabetes.

Aliases: NEF, S100, S100-B, S100beta

Molecular Weight: 10.7 kDa

Gene ID: 6285

Pathways: [Regulation of Muscle Cell Differentiation](#), [Positive Regulation of Immune Effector Process](#), [Toll-Like Receptors Cascades](#), [Regulation of long-term Neuronal Synaptic Plasticity](#), [S100 Proteins](#)

Application Details

Application Notes: WB:1:500 - 1:2000, IHC:1:200 - 1:1000, FCM:1:200 - 1:400, ELISA:1:10000,

Restrictions: For Research Use only

Handling

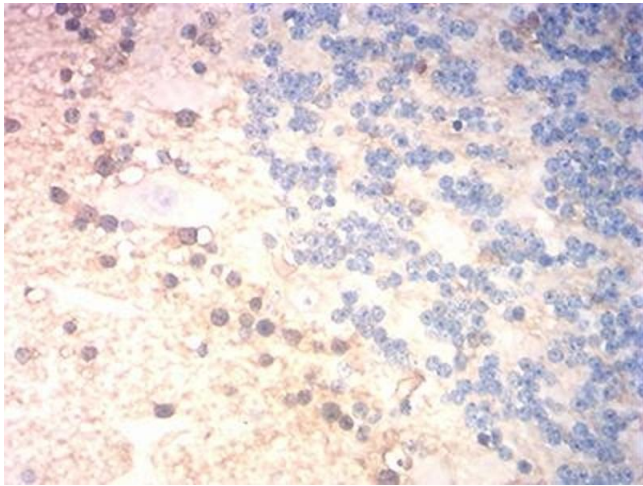
Buffer: Purified antibody in PBS with 0.05 % sodium azide

Preservative: Sodium azide

Precaution of Use: This product contains Sodium azide: a POISONOUS AND HAZARDOUS SUBSTANCE which should be handled by trained staff only.

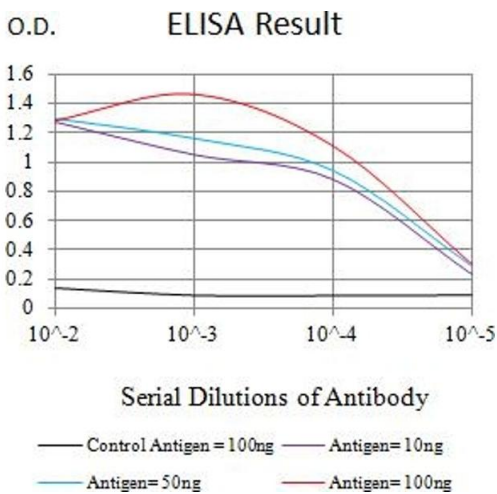
Storage: 4 °C/-20 °C

Storage Comment: 4°C, -20°C for long term storage



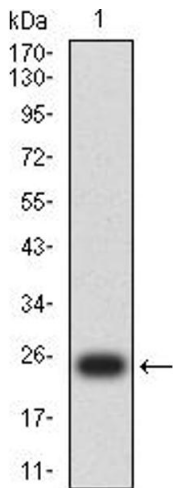
Immunohistochemistry

Image 1. Immunohistochemical analysis of paraffin-embedded cerebellum tissues using S100B mouse mAb with DAB staining.



ELISA

Image 2. Black line: Control Antigen (100 ng),Purple line: Antigen (10 ng), Blue line: Antigen (50 ng), Red line:Antigen (100 ng)



Western Blotting

Image 3. Western blot analysis using S100B mAb against human S100B (AA: 1-92) recombinant protein. (Expected MW is 24.3 kDa)

Please check the [product details page](#) for more images. Overall 5 images are available for ABIN7193505.