

Datasheet for ABIN7193507
anti-CKM antibody (AA 1-381)[Go to Product page](#)

4 Images

Overview

| | |
|----------------------|--|
| Quantity: | 0.1 mg |
| Target: | CKM |
| Binding Specificity: | AA 1-381 |
| Reactivity: | Human |
| Host: | Mouse |
| Clonality: | Monoclonal |
| Conjugate: | This CKM antibody is un-conjugated |
| Application: | Western Blotting (WB), ELISA, Immunohistochemistry (IHC) |

Product Details

| | |
|---------------|--|
| Immunogen: | Purified recombinant fragment of human CKM (AA: 1-381) expressed in E. coli. |
| Clone: | 1D10F2 |
| Isotype: | IgG1 |
| Purification: | purified |

Target Details

| | |
|-------------------|--|
| Target: | CKM |
| Alternative Name: | CKM (CKM Products) |
| Background: | Description: The protein encoded by this gene is a cytoplasmic enzyme involved in energy homeostasis and is an important serum marker for myocardial infarction. The encoded protein |

Target Details

reversibly catalyzes the transfer of phosphate between ATP and various phosphogens such as creatine phosphate. It acts as a homodimer in striated muscle as well as in other tissues, and as a heterodimer with a similar brain isozyme in heart. The encoded protein is a member of the ATP:guanido phosphotransferase protein family.

Aliases: CKMM, M-CK, CPK-M

Molecular Weight: 43.1 kDa

Gene ID: 1158

Application Details

Application Notes: WB:1:500 - 1:2000, IHC:1:200 - 1:1000, ELISA:1:10000,

Restrictions: For Research Use only

Handling

Buffer: Purified antibody in PBS with 0.05 % sodium azide

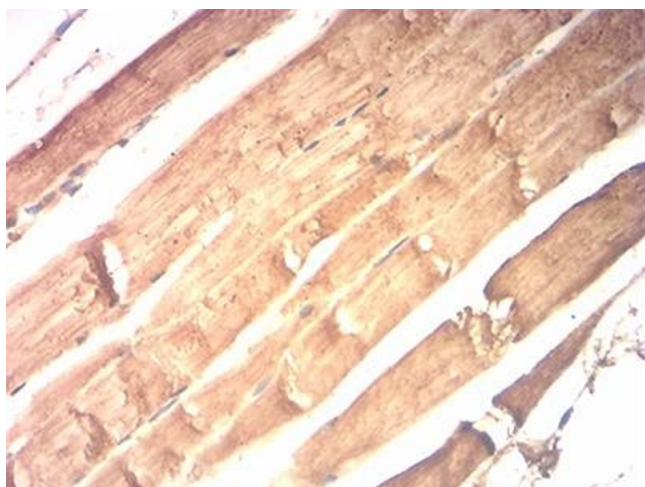
Preservative: Sodium azide

Precaution of Use: This product contains Sodium azide: a POISONOUS AND HAZARDOUS SUBSTANCE which should be handled by trained staff only.

Storage: 4 °C/-20 °C

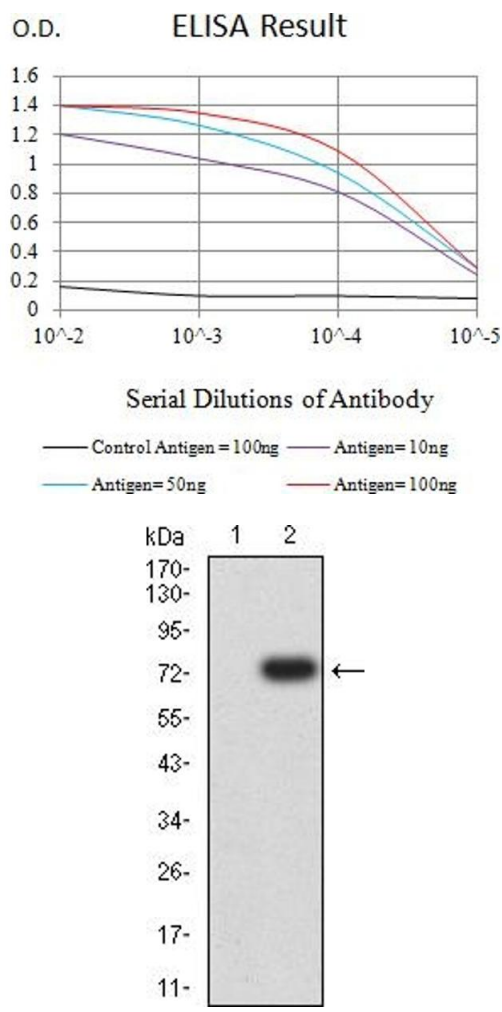
Storage Comment: 4°C, -20°C for long term storage

Images



Immunohistochemistry

Image 1. Immunohistochemical analysis of paraffin-embedded muscle tissues using CKM mouse mAb with DAB staining.



ELISA

Image 2. Black line: Control Antigen (100 ng),Purple line: Antigen (10 ng), Blue line: Antigen (50 ng), Red line:Antigen (100 ng)

Western Blotting

Image 3. Western blot analysis using CKM mAb against HEK293 (1) and CKM (AA: 1-381)-hIgGFc transfected HEK293 (2) cell lysate.

Please check the [product details page](#) for more images. Overall 4 images are available for ABIN7193507.